

# Cauvery Associates

## **Architects Engineers**

No. 274, 4th CROSS, 2nd BLOCK,  
2nd STAGE, RAJMAHAL VILAS,  
BENGALURU 560094.

GANESHA SHETTY B      PRINCIPAL ARCHITECT.

B.E. (CIVIL) FROM BENGALURU UNIVERSITY.

M.E (STRUCTURAL) FROM BENGALURU UNIVERSITY

ASSOCIATE OF INDIAN INSTITUTE OF ARCHITECTS, THROUGH EXAM.

REGISTERED ARCHITECT, COUNCIL OF ARCHITECTURE.

MEMBER OF INSTITUTION OF ENGINEERS

(I) AND CHARTERED ENGINEER.

FELLOW OF INSTITUTION OF VALUERS AND APPROVED VALUER.

FELLOW OF ASSOCIATION OF CONSULTING CIVIL ENGINEERS (INDIA).

MEMBER OF INDIAN CONCRETE INSTITUTE.

SHILPA SHETTY      ASSOCIATE ARCHITECT.  
B.Arch FROM MYSORE UNIVERSITY.  
ASSOCIATE OF INDIAN INSTITUTE OF ARCHITECTS.  
REGISTERED ARCHITECT, COUNCIL OF ARCHITECTURE.

ADDRESS              CAUVERY ASSOCIATES,  
No.274, 4<sup>TH</sup> CROSS, 2<sup>ND</sup> BLOCK,  
2<sup>ND</sup> STAGE, RAJ MAHAL VILAS,  
BENGALURU 560 094

TELEPHONE 080 29735528 (O)

MOBILE      94480 02844

G-MAIL      [cauverysg274@gmail.com](mailto:cauverysg274@gmail.com)

PROFILE      CAUVERY ASSOCIATES WAS STARTED IN THE YEAR 1996 AND PROVIDES  
CONSULTANCY IN ARCHITECTURAL DESIGN, STRUCTURAL DESIGN AND VALUATION.

THE FIRM HAS DEALT WITH A VARIED NUMBER OF PROJECTS WHICH INCLUDES  
RESIDENCES, APARTMENTS, SCHOOL BUILDINGS, INDUSTRIAL BUILDINGS AND COMMERCIAL  
COMPLEXS. LIST IS ENCLOSED.

LIST OF PROJECTS COMPLETED / ON GOING ARE:

**INDUSTRIAL**

- 1) TTK PRESTIGE LTD, WARE HOUSE 1 AND 2, HOSUR, TAMILNADU.
- 2) TTK PRESTIGE LTD, INDUSTRIAL BUILDING UNIT 2, UNIT 2 OFFICE EXTENSION AT ROORKEE, UTTARAKAND.
- 3) TTK PRESTIGE LTD, INDUSTRIAL BUILDING AND GUEST HOUSE AT COIMBATORE, TN.
- 4) TTK PRESTIGE LTD, UNIT-1 EXTENSION, HOSUR.
- 5) TTK PRESTIGE LTD, UNIT-2 EXTENSION, HOSUR.
- 6) TTK HEALTH CARE FOODS DIVISION, WARE HOUSE, HOSKOTE.
- 7) TTK HEALTH CARE FOODS DIVISION, R&D, HOSKOTE.
- 8) TTK PRESTIGE WARE HOUSE FOR UNIT-2, HOSUR.
- 9) TTK PRESTIGE WARE HOUSE FOR ROORKEE, UTTARAKAND.
- 10) M/S ADITYA BIRLA FASHION & RETAIL LTD. AT BHUBANESHWARADI
  
- 11) SHAHI EXPORTS LTD,
  1. BAGALUR, TN.
  2. MADDUR PLANT PHASE 1,2,3 & 4
  3. GARMENTING UNIT, SHIVAMOGGA.
  4. MENS DORMETRY – PHASE 1, SHIVAMOGGA.
  5. SHIVAMOGGA WASHING.
  6. SHIVAMOGGA, COTTON GODOWN NO.5.
  7. KOLAR PLANT PHASE 1 AND 2.
  8. U-23, HOSUR ROAD, BENGALURU.
  9. MYSURU- PHASE 1 AND 2
  10. T. NARASIPURA, MYSURU. PHASE-1 & 2.
  11. SAGARA, SHIVAMOGGA DIST.
  12. BYADAGI, HAVERI DIST.
  13. KUPPAM, AP.
  14. BHUBANESHWAR PHASE 1 & 2 ODISHA.
  15. MENS DORMETRY -2, SHIVAMOGGA.
  
- 12) SWASTID ENGINEERING PVT LTD, JAKASANDRA, MALUR.
  
- 13) BIG BAGS LTD AT DABASPET.
- 14) BIG BAGS LTD, UNIT-1 AND UNIT 2, UNIT 3 GANGIMAT, MANGALORE
  
- 15) BFW LIMITED, FOUNDARY DIVISION, HOSUR.
  
- 16) BFW LIMITED, CNC DIVISION, HOSUR.
- 17) CNC HANGER AND STEELYARD FOR BFW LTD., PEENYA, BENGALURU.
- 18) VLD HANGER, BFW LTD, PEENYA, BENGALURU.
- 19) GCL INDIA, DABASPET.

- 20) ADVANCED TECHNOLOGY MANGALORE.
- 21) INDUSTRIAL BUILDING FOR M/S. SATRAC, PEENYA, BENGALURU.
- 22) METAL CLOUSER INDUSTRIES, HIMACHAL PRADESH.
- 23) METAL CLOUSER INDUSTRIES, EXTENSION OF SHOP FLOOR, KANAKAPURA ROAD, BENGALURU
- 24) INDUSTRIAL BUILDING FOR NARASAPUR AND SONS, KUMBALGODU, MYSORE ROAD.
- 25) CREATIVE AROMATICS, YASHWANTHPUR INDUSTRIAL AREA, BENGALURU.
- 26) INDUSTRIAL BUILDING FOR MR. MAHESH BHORA AT BIDADI.
- 27) NHS INDUSTRIES, GOWRIBIDANUR.
- 28) INDUSTRIAL BUILDING FOR VAHINI IRRIGATION, TUMKUR.
- 29) APEX LUMINERIES, INDUSTRIAL BUILDING, MALUR.
- 30) INDUSTRIAL SHED FOR MR. NANDA KUMAR, PEENYA, BENGALURU.
- 31) INDUSTRIAL SHED FOR MR. V. RAGHU, MS PLYA, BENGALURU.
- 32) INDUSTRIAL BUILDING FOR M/S. BEVEL GEARS.
- 33) COMMERCIAL COMPLEX FOR STONE TECH INTERNATIONAL, CMH ROAD, BENGALURU.
- 34) INDUSTRIAL BUILDING FOR STONE TECH INTERNATIONAL, MALUR
- 35) INDUSTRIAL BUILDING FOR MAHESH BHORA UNIT 1 AND 2, KUMBALAGUD, MYSORE ROAD.
- 36) INDUSTRIAL BUILDING FOR PMPL, VASANTH NARSAPURA TUMKUR DIST.
- 37) INDUSTRIAL BUILDING FOR GODREJ AGROVET, KUNIGAL ROAD, TUMUKR.
- 38) POULTRY FARM FOR VENKATESHWARA HACHERIS, UNIT 1 AND 2, TUMKUR.
- 39) INDUSTRIAL BUILDING FOR MR. MAHESH BHORA- 1,2,3 AT BIDADI.

## **APARTMENTS**

- 40) FLOATING GARDEN, WHITEFIELD, BENGALURU.
- 41) TULASI APARTMENT, DOOPANAHALLI, BENGALURU
- 42) APARTMENT FOR RAGHUNATH, NEHRU NAGAR, BENGALURU.
- 43) APARTMENT FOR MR. LAKSHMAN, SIDDAPUR, VARTHUR ROAD, BENGALURU.
- 44) APARTMENT FOR GOVINDAPPA, KENGERI.
- 45) ASHA REGENCY, MSRIT ROAD, BENGALURU.
- 46) SAFEWAY HOMES, HORAMAU.
- 47) VISHWAS GOWRI ESPANA, VIDYARANYAPURA, BENGALURU.
- 48) APARTMENT FOR MR. BALKRISHNAPPA, BHOOPASANDRA, BENGALURU.
- 49) VISWAS TULIP, MUTHYAL NAGAR, BENGALURU.

- 50) VISWAS DAFFODIL, RAMACHANDRAPURA, BENGALURU.
- 51) BK ETERNITY, MUTHYAL NAGAR, BENGALURU.
- 48) KRISHI TECHNOLOGY, DODDAGUBHI
- 49) SKYLINE APARTMENT AT SURTHKAL MANGALORE.

## **SCHOOLS**

- 52) FREEDOM INTERNATIONAL SCHOOL, VEERASOUDHA TRUST, HSR LAYOUT, BENGALURU.
- 53) VIDYDAYINEE SCHOOL, PALACE GUTTAHALLI, BENGALURU.
- 54) POORNAPRAGNA SCHOOL, KRISHNA NAGAR, BAGALUR, BENGALURU.
- 55) MOTHER THERESA SCHOOL, JALAHALLI, BENGALURU.
- 56) AUDITORIUM FOR VANI GIRLS HIGH SCHOOL, RAJAJINAGAR, BENGALURU.
- 57) GOVERNMENT SCHOOL AT MASKAL, TUMAKURU DISTRIC.
- 58) SCHOOL BUILDING FOR CHAMARAJPET SRI RAMAMANDIR ASSOCIATION (R), CHAMARAJPET, BENGALURU.

## **OTHERS**

- 59) LODGE FOR MR. SHAMANNA GOWDA, KOPPA, CHIKMAGALUR DIST.
- 60) PENTACOSTAL CHURCH AT COLES ROAD, GEDDALAHALLI, MATHIKERE, HAL, CHITTORE BRANCHES, JAYANAGAR, ELECTRONIC CITY.
- 61) ICTHUS CHURCH, WHITEFIELD, BENGALURU.
- 62) SRINIVAS KALYANAMANTAPA.
- 63) PATEL DIAGNOSTICS AT YELAHANKA.
- 64) NAGARATHAR WELFARE ASSOCIATION.
- 65) KVR CONVENTION CENTER.
- 66) UJJNI COMPLEX AT CHANDRA LAYOUT.
- 67) AMARA SHILPI JAKANACHARYA SAMUDAYA BHAVAN AT TUMAKURU
- 68) SAMUDAYA BHAVANA AT HONNUDUKE, TUMAKURU.
- 69) COMMERCIAL COMPLEX FOR Mr. LOKESH AT WHITEFIELD
- 70) SRIRAM HOSPITAL, VIVEK NAGAR.  
MOTEL AT ILWALA, MYSORE.



M/S ADITYA BIRLA FASHION & RETAIL LTD. AT BHUBANESHWARADI



M/s SHAHI EXPORT PVT, LTD MYSURU -2



BFW LIMITED, CNC DIVISION, HOSUR.



BIG BAGS LTD, UNIT-1 AND UNIT 2, UNIT 3 GANGIMAT, MANGALORE



**TTK PRESTIGE LTD, COIMBATORE.**



TTK PRESTIGE LTD PLOT NO A1,A2  
DEVBHOMI INDUSTRIAL ESTATE, ROORKE

CAUVERY ASSOCIATES ARCHITECTS ENGINEERS  
NO. 274 , 4TH CROSS 2ND BLOCK, 2ND STAGE,  
RAJMAHAL VILAS BANGALORE 94

**TTK PRESTIGE LTD, ROORKEE, UTTARAKHAND**





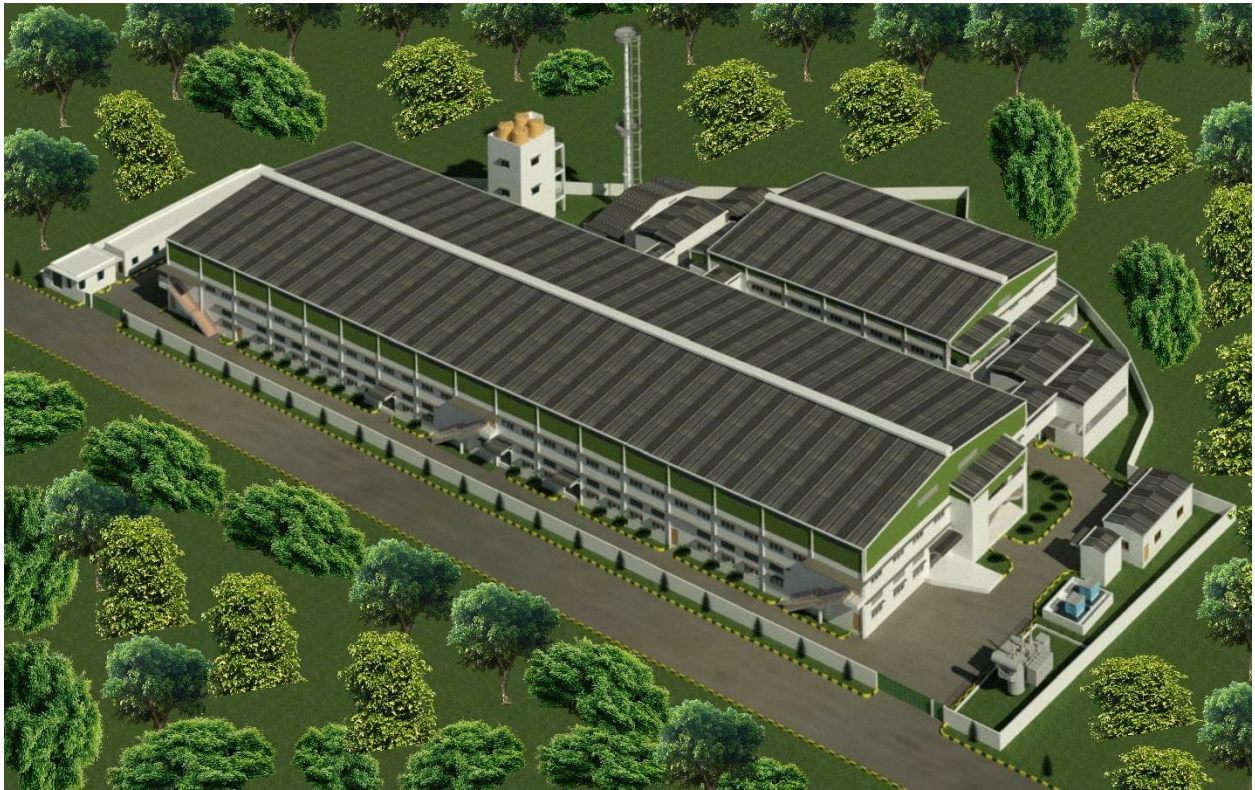
**TTK PRESTIGE LTD, OFFICE BLOCK, ROORKEE, UTTARAKHAND**



**BIGBAGS LTD, DABASPET.**



**SHAHI DORMITORY, PHASE 2 SHIVAMOGGA.**



**SHAHI EXPORTS PVT LTD, PHASE 2, BHUBANESWAR.**



M/s SHAHI EXPORT PVT, LTD MYSURU – 1



SHAHI EXPORTS PVT LTD, IWD, MADDUR PHASE-4.



SHAHI EXPORTS PVT LTD T. NARASIPURA PHASE-1.



SHAHI EXPORTS PVT LTD, SAGARA



SWASTID ENGINEERING-JAKKASANDRA



M/s ADVANCED TECHNOLOGIES LIMITED, MANGALURU.



SHAHI EXPORTS PVT LTD, PHASE 1, BHUBANESWAR.



M/s VAHINI IRRIGATION PVT. LTD.



SHAHI EXPORTS PVT LTD, KUPPAM.



SHAHI EXPORTS PVT LTD T. NARASIPURA PHASE-2.



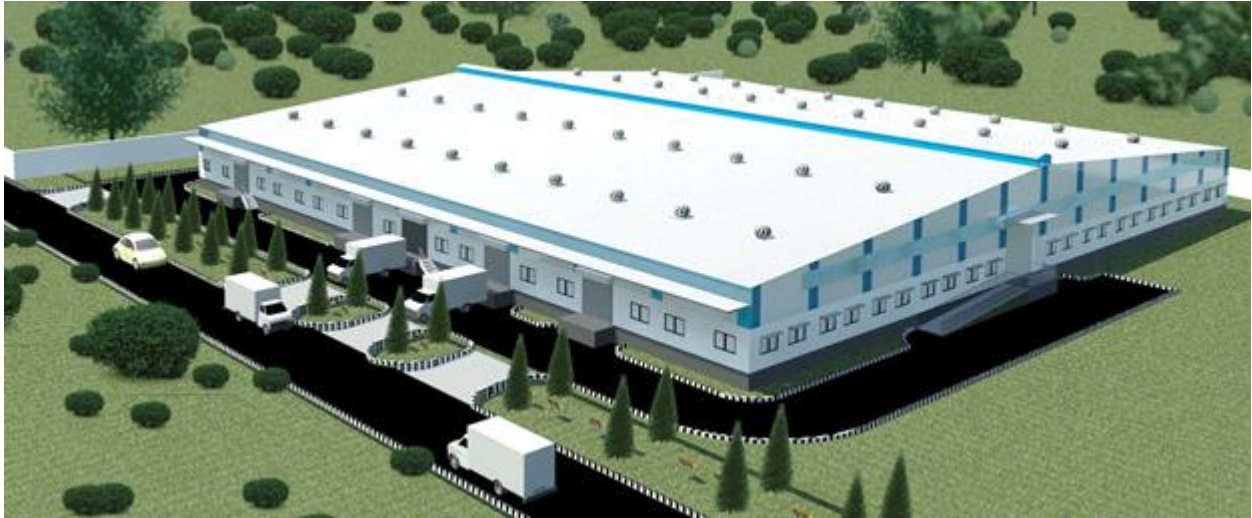
SHAHI EXPORTS PVT LTD SHIVAMOGGA, COTTON GODOWN-5.



**TTK PRESTIGE LTD, WARE HOUSE, HOSUR.**



**GCL INDIA, DABASPET.**



M/s SHAHI EXPORT PVT LTD, WARE HOUSE, MADDUR PHASE-3



GODREJ AGROVET, KUNIGAL ROAD, TUMAKURU.





SHAHI DORMITORY, PHASE 1 SHIVAMOGGA.



SKYLINE APARTMENT, MANGALORE.



B K ETERNITY, BENGALURU.



KVR CONVENTION CENTER AT KOLAR.



**GOWRI ESPANA ,VIDYARANYAPURA ,BENGALURU**



**ROMA REGENCY**



FLOATING GARDENS, WHITEFIELD.



VISHWAS DAFFODIL, RAMACHANDRAPURA, BENGALURU.



SMITHA SHETTY, SANJAYNAGAR.



S. SHETTY, RMV 2ND STAGE.



AMARA SHILPI JAKANACHARYA SAMUDAYA BHAVAN AT TUMAKURU.



GOVERNMENT SCHOOL AT MASKAL, TUMAKURU.



SAMUDAYA BHAVANA AT HONNUDUKE, TUMAKURU.





COMMERCIAL COMPLEX FOR Mr. LOKESH AT WHITEFIELD.



PATEL DIAGNOSTICS AT YELAHANKA.



UJUNI COMPLEX AT CHANDRA LAYOUT.

