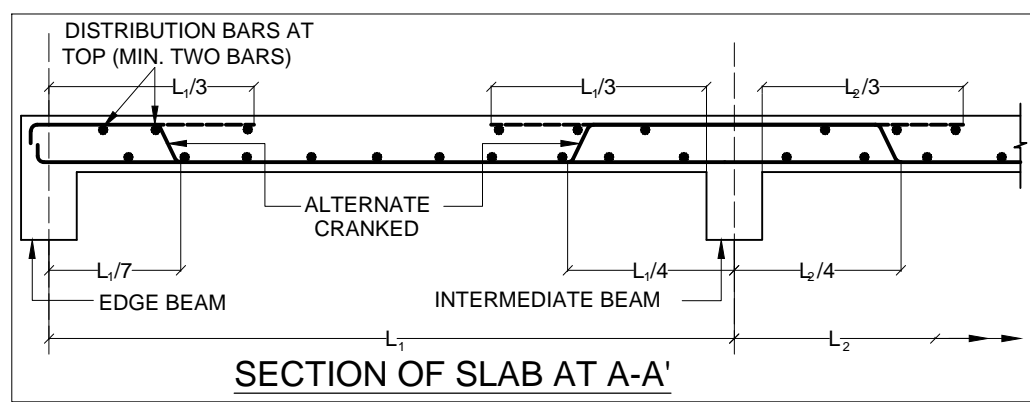


COLUMN SCHEDULE		C1	C2	C3	C4	C5	C6	C7	C8	C9	C10
COLUMN SIZE	B	9"	9"	12"	12"	12"	12"	14"	14"	12"	12"
L	L	24"	24"	24"	24"	28"	28"	28"	36"	24"	28"
CONCRETE MIX SECTION WITH MAIN STEEL		M25	M25	M25	M25	M25	M25	M25	M25	M25	M25
FOUNDATION TO 1ST. FLOOR LEVEL	LINKS	10-20 mm. Tor + 2-16 mm. Tor	10-25 mm. Tor	10-25 mm. Tor	12-25 mm. Tor	12-25 mm. Tor	12-25 mm. Tor + 2-20 mm. Tor	18-25 mm. Tor	24-25 mm. Tor	12-25 mm. Tor	12-25 mm. Tor + 2-20 mm. Tor
	LINKS	8 mm. @ 6" C/C AT SUPPORT & 8 mm. @ 8" C/C AT MIDDLE	8 mm. @ 6" C/C AT SUPPORT & 8 mm. @ 8" C/C AT MIDDLE	8 mm. @ 6" C/C AT SUPPORT & 8 mm. @ 8" C/C AT MIDDLE	8 mm. @ 6" C/C AT SUPPORT & 8 mm. @ 8" C/C AT MIDDLE	8 mm. @ 6" C/C AT SUPPORT & 8 mm. @ 8" C/C AT MIDDLE	8 mm. @ 6" C/C AT SUPPORT & 8 mm. @ 8" C/C AT MIDDLE	8 mm. @ 6" C/C AT SUPPORT & 8 mm. @ 8" C/C AT MIDDLE	8 mm. @ 6" C/C AT SUPPORT & 8 mm. @ 8" C/C AT MIDDLE	8 mm. @ 6" C/C AT SUPPORT & 8 mm. @ 8" C/C AT MIDDLE	8 mm. @ 6" C/C AT SUPPORT & 8 mm. @ 8" C/C AT MIDDLE
1ST. FLOOR TO 3RD. FLOOR LEVEL	LINKS	10-20 mm. Tor	10-20 mm. Tor	10-20 mm. Tor	12-25 mm. Tor	10-25 mm. Tor	12-25 mm. Tor + 2-20 mm. Tor	12-25 mm. Tor + 2-20 mm. Tor	16-25 mm. Tor + 4-20 mm. Tor	12-25 mm. Tor	12-25 mm. Tor
	LINKS	8 mm. @ 6" C/C AT SUPPORT & 8 mm. @ 8" C/C AT MIDDLE	8 mm. @ 6" C/C AT SUPPORT & 8 mm. @ 8" C/C AT MIDDLE	8 mm. @ 6" C/C AT SUPPORT & 8 mm. @ 8" C/C AT MIDDLE	8 mm. @ 6" C/C AT SUPPORT & 8 mm. @ 8" C/C AT MIDDLE	8 mm. @ 6" C/C AT SUPPORT & 8 mm. @ 8" C/C AT MIDDLE	8 mm. @ 6" C/C AT SUPPORT & 8 mm. @ 8" C/C AT MIDDLE	8 mm. @ 6" C/C AT SUPPORT & 8 mm. @ 8" C/C AT MIDDLE	8 mm. @ 6" C/C AT SUPPORT & 8 mm. @ 8" C/C AT MIDDLE	8 mm. @ 6" C/C AT SUPPORT & 8 mm. @ 8" C/C AT MIDDLE	8 mm. @ 6" C/C AT SUPPORT & 8 mm. @ 8" C/C AT MIDDLE
3RD. FLOOR TO 5TH. FLOOR LEVEL	LINKS	8-16 mm. Tor + 2-12 mm. Tor	8-20 mm. Tor	10-25 mm. Tor	10-20 mm. Tor	12-20 mm. Tor	10-20 mm. Tor + 4-16 mm. Tor	12-25 mm. Tor	12-25 mm. Tor	12-25 mm. Tor	12-25 mm. Tor
	LINKS	8 mm. @ 6" C/C AT SUPPORT & 8 mm. @ 8" C/C AT MIDDLE	8 mm. @ 6" C/C AT SUPPORT & 8 mm. @ 8" C/C AT MIDDLE	8 mm. @ 6" C/C AT SUPPORT & 8 mm. @ 8" C/C AT MIDDLE	8 mm. @ 6" C/C AT SUPPORT & 8 mm. @ 8" C/C AT MIDDLE	8 mm. @ 6" C/C AT SUPPORT & 8 mm. @ 8" C/C AT MIDDLE	8 mm. @ 6" C/C AT SUPPORT & 8 mm. @ 8" C/C AT MIDDLE	8 mm. @ 6" C/C AT SUPPORT & 8 mm. @ 8" C/C AT MIDDLE	8 mm. @ 6" C/C AT SUPPORT & 8 mm. @ 8" C/C AT MIDDLE	8 mm. @ 6" C/C AT SUPPORT & 8 mm. @ 8" C/C AT MIDDLE	8 mm. @ 6" C/C AT SUPPORT & 8 mm. @ 8" C/C AT MIDDLE
5TH. FLOOR TO 7TH. FLOOR LEVEL	LINKS	8-16 mm. Tor	8-16 mm. Tor	10-20 mm. Tor	8-20 mm. Tor	8-20 mm. Tor	10-20 mm. Tor	12-20 mm. Tor	12-20 mm. Tor	12-20 mm. Tor	12-20 mm. Tor
	LINKS	8 mm. @ 6" C/C AT SUPPORT & 8 mm. @ 8" C/C AT MIDDLE	8 mm. @ 6" C/C AT SUPPORT & 8 mm. @ 8" C/C AT MIDDLE	8 mm. @ 6" C/C AT SUPPORT & 8 mm. @ 8" C/C AT MIDDLE	8 mm. @ 6" C/C AT SUPPORT & 8 mm. @ 8" C/C AT MIDDLE	8 mm. @ 6" C/C AT SUPPORT & 8 mm. @ 8" C/C AT MIDDLE	8 mm. @ 6" C/C AT SUPPORT & 8 mm. @ 8" C/C AT MIDDLE	8 mm. @ 6" C/C AT SUPPORT & 8 mm. @ 8" C/C AT MIDDLE	8 mm. @ 6" C/C AT SUPPORT & 8 mm. @ 8" C/C AT MIDDLE	8 mm. @ 6" C/C AT SUPPORT & 8 mm. @ 8" C/C AT MIDDLE	8 mm. @ 6" C/C AT SUPPORT & 8 mm. @ 8" C/C AT MIDDLE
7TH. FLOOR TO ROOF LEVEL	LINKS	8-16 mm. Tor	8-16 mm. Tor	10-20 mm. Tor	8-16 mm. Tor	8-16 mm. Tor	8-20 mm. Tor	8-20 mm. Tor + 4-16 mm. Tor	10-20 mm. Tor	12-20 mm. Tor	12-20 mm. Tor
	LINKS	8 mm. @ 6" C/C AT SUPPORT & 8 mm. @ 8" C/C AT MIDDLE	8 mm. @ 6" C/C AT SUPPORT & 8 mm. @ 8" C/C AT MIDDLE	8 mm. @ 6" C/C AT SUPPORT & 8 mm. @ 8" C/C AT MIDDLE	8 mm. @ 6" C/C AT SUPPORT & 8 mm. @ 8" C/C AT MIDDLE	8 mm. @ 6" C/C AT SUPPORT & 8 mm. @ 8" C/C AT MIDDLE	8 mm. @ 6" C/C AT SUPPORT & 8 mm. @ 8" C/C AT MIDDLE	8 mm. @ 6" C/C AT SUPPORT & 8 mm. @ 8" C/C AT MIDDLE	8 mm. @ 6" C/C AT SUPPORT & 8 mm. @ 8" C/C AT MIDDLE	8 mm. @ 6" C/C AT SUPPORT & 8 mm. @ 8" C/C AT MIDDLE	8 mm. @ 6" C/C AT SUPPORT & 8 mm. @ 8" C/C AT MIDDLE



SLAB SCHEDULE (CONC. GRADE M 20)			
S.NO.	SLAB MARKED	AT SMALLER SPAN alternate cranked at support	AT LONGER SPAN alternate cranked at support
1.	S1(4.5"THK.)	8 mm.Tor@ 6" c/c alternate cranked at support	8 mm.Tor@ 8" c/c alternate cranked at support
2.	S2(4.5"THK.)	8 mm.Tor@ 5" c/c alternate cranked at support	8 mm.Tor@ 6" c/c alternate cranked at support
3.	S3(5"THK.)	10 mm.Tor@ 5" c/c alternate cranked at support	10 mm.Tor@ 6" c/c alternate cranked at support
4.	S4(5"THK.)	8 mm.Tor@ 4" c/c alternate cranked at support	8 mm.Tor@ 5" c/c alternate cranked at support
5.	S5(5.5"THK.)	10 mm.Tor@ 4" c/c alternate cranked at support	10 mm.Tor@ 5" c/c alternate cranked at support