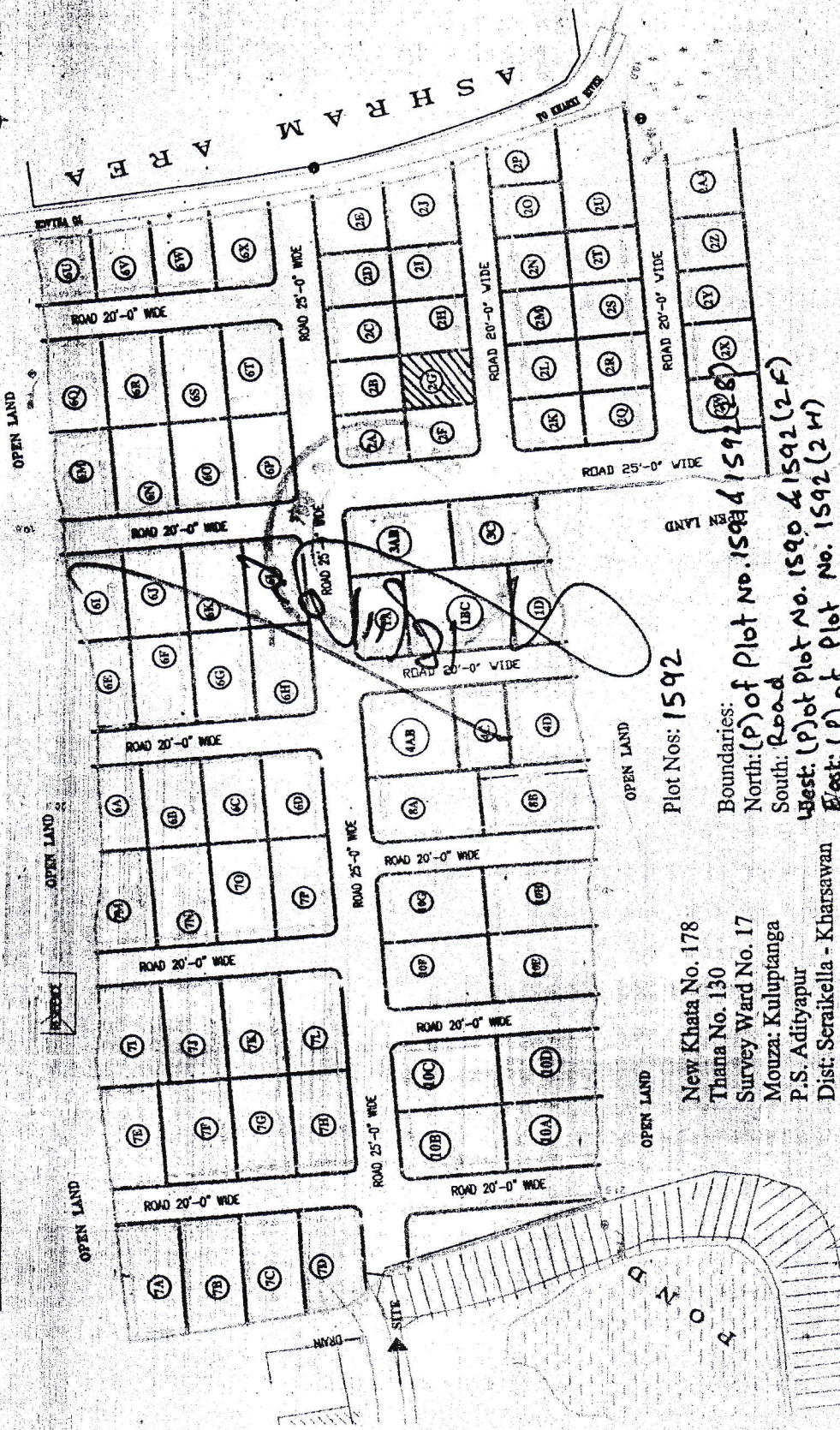


LAND PLAN OF "CITY TOWNSHIP", ADITYAPUR-2



Plot Nos: 1592

Boundaries:  
 North: (P) of Plot No. 1592 & 1591  
 South: Road  
 West: (P) of Plot No. 1590 & 1592 (2 F)  
 East: (P) of Plot No. 1592 (2 H)

New Khata No. 178  
 Thana No. 130  
 Survey Ward No. 17  
 Mouza: Kuluptianga  
 P.S. Adityapur  
 Dist: Seraikella - Kharsawan

SCALE: 1 CM = 500 CM  
 SHOWING RED HATCHED PORTION; NO. 2 G,

Measuring 30' X 40' = 1200 Sq. ft.

For CITY RESIDENCY (IND) PRVT. LTD.

Saswan Agoual. *Tajilal* Director.

A S H R A M  
 AREA

OPEN LAND

OPEN LAND

OPEN LAND

OPEN LAND

OPEN LAND

OPEN LAND

OPEN LAND

OPEN LAND

DRAIN

SITE

TO ROAD BRIDGE