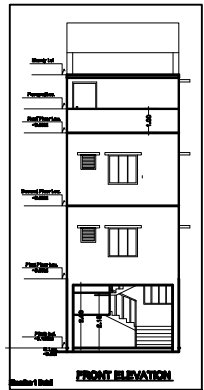
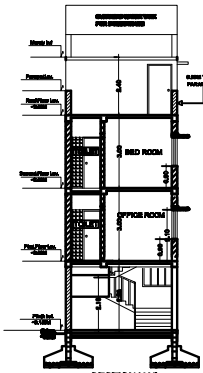


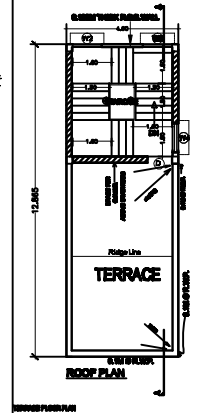
SIDE ELEVATION



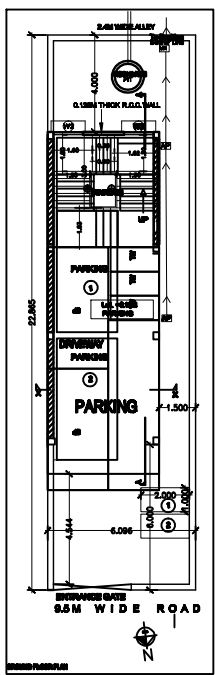
FRONT ELEVATION



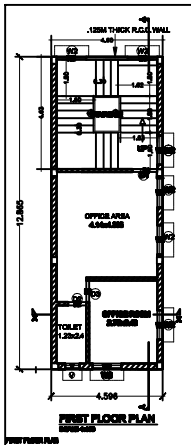
SECTION X-X'



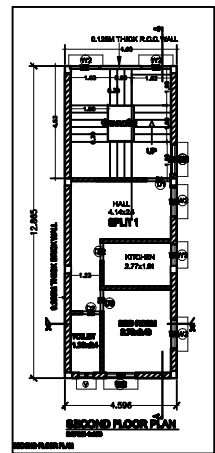
ROOF PLAN



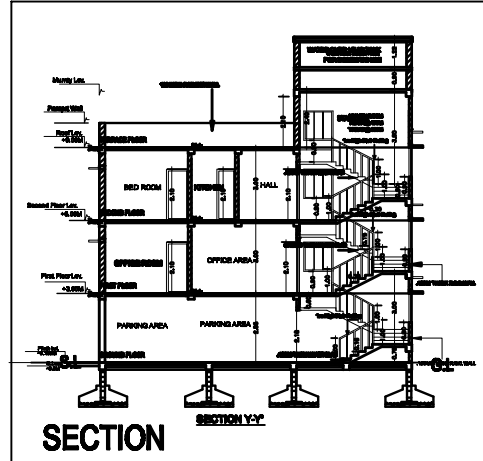
9.5M WIDE ROAD



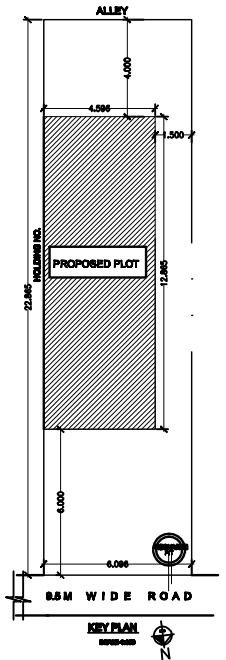
FIRST FLOOR PLAN



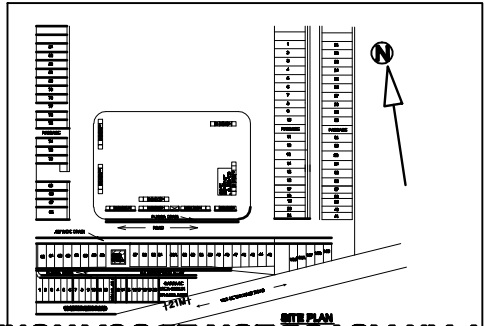
SECOND FLOOR PLAN



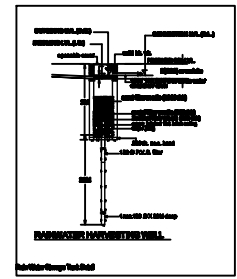
SECTION Y-Y'



KEY PLAN



SITE PLAN



FOUNDATION PLAN

**AREA DETAILS**

No.	Description	Area (sq.m)	Volume (cu.m)	Remarks
1	Plot Area	65.00	0.00	
2	Office Area	45.00	0.00	
3	Bed Room	10.00	0.00	
4	Kitchen	8.00	0.00	
5	Toilet	2.00	0.00	
6	Hall	10.00	0.00	
7	Parking Area	15.00	0.00	
8	Terrace	5.00	0.00	
9	Staircase	2.00	0.00	
10	W.C.	1.00	0.00	
11	Other	1.00	0.00	
<b>Total</b>	<b>Plot Area</b>	<b>65.00</b>	<b>0.00</b>	

% of Ground Coverage = 69.23% (On Plot Area excluding Road Widening only)

F.A.P. = 1.21



OWNER:

PLOT DETAILS:  
SHOP HOLDING NO :  
GOLMURI MARKET AREA  
JAMSHEDPUR  
DIST: EAST SINGHERHUM, JHARKHAND

DOOR WINDOW AND VENTILATION DETAIL

S.	NO.	DESCRIPTION	Material/Specification
1.	01	WOODEN DOOR	Painted wood/Aluminum door
2.	02	WOODEN WINDOW	Painted wood/Aluminum window
3.	03	WOODEN WINDOW	Painted wood/Aluminum window
4.	04	WOODEN WINDOW	Painted wood/Aluminum window
5.	05	WOODEN WINDOW	Painted wood/Aluminum window
6.	06	WOODEN WINDOW	Painted wood/Aluminum window
7.	07	WOODEN WINDOW	Painted wood/Aluminum window
8.	08	WOODEN WINDOW	Painted wood/Aluminum window
9.	09	WOODEN WINDOW	Painted wood/Aluminum window
10.	10	WOODEN WINDOW	Painted wood/Aluminum window
11.	11	WOODEN WINDOW	Painted wood/Aluminum window
12.	12	WOODEN WINDOW	Painted wood/Aluminum window
13.	13	WOODEN WINDOW	Painted wood/Aluminum window
14.	14	WOODEN WINDOW	Painted wood/Aluminum window
15.	15	WOODEN WINDOW	Painted wood/Aluminum window
16.	16	WOODEN WINDOW	Painted wood/Aluminum window
17.	17	WOODEN WINDOW	Painted wood/Aluminum window
18.	18	WOODEN WINDOW	Painted wood/Aluminum window
19.	19	WOODEN WINDOW	Painted wood/Aluminum window
20.	20	WOODEN WINDOW	Painted wood/Aluminum window

- Note: Standard to apply is as per:
- IS 8000 - 1984 (Part 1) - Code of Practice for Reinforced Concrete (General Use)
  - IS 8000 - 1984 (Part 2) - Code of Practice for Reinforced Concrete (Structural)
  - IS 8000 - 1984 (Part 3) - Code of Practice for Reinforced Concrete (Structural)
  - IS 8000 - 1984 (Part 4) - Code of Practice for Reinforced Concrete (Structural)
  - IS 8000 - 1984 (Part 5) - Code of Practice for Reinforced Concrete (Structural)
  - IS 8000 - 1984 (Part 6) - Code of Practice for Reinforced Concrete (Structural)
  - IS 8000 - 1984 (Part 7) - Code of Practice for Reinforced Concrete (Structural)
  - IS 8000 - 1984 (Part 8) - Code of Practice for Reinforced Concrete (Structural)
  - IS 8000 - 1984 (Part 9) - Code of Practice for Reinforced Concrete (Structural)
  - IS 8000 - 1984 (Part 10) - Code of Practice for Reinforced Concrete (Structural)
  - IS 8000 - 1984 (Part 11) - Code of Practice for Reinforced Concrete (Structural)
  - IS 8000 - 1984 (Part 12) - Code of Practice for Reinforced Concrete (Structural)
  - IS 8000 - 1984 (Part 13) - Code of Practice for Reinforced Concrete (Structural)
  - IS 8000 - 1984 (Part 14) - Code of Practice for Reinforced Concrete (Structural)
  - IS 8000 - 1984 (Part 15) - Code of Practice for Reinforced Concrete (Structural)
  - IS 8000 - 1984 (Part 16) - Code of Practice for Reinforced Concrete (Structural)
  - IS 8000 - 1984 (Part 17) - Code of Practice for Reinforced Concrete (Structural)
  - IS 8000 - 1984 (Part 18) - Code of Practice for Reinforced Concrete (Structural)
  - IS 8000 - 1984 (Part 19) - Code of Practice for Reinforced Concrete (Structural)
  - IS 8000 - 1984 (Part 20) - Code of Practice for Reinforced Concrete (Structural)

SIGNATURE OF OWNER:

SIGNATURE OF CONSULTANT:

DATE OF PREPARATION:

SCALE:

DESIGNER:

OFFICE: