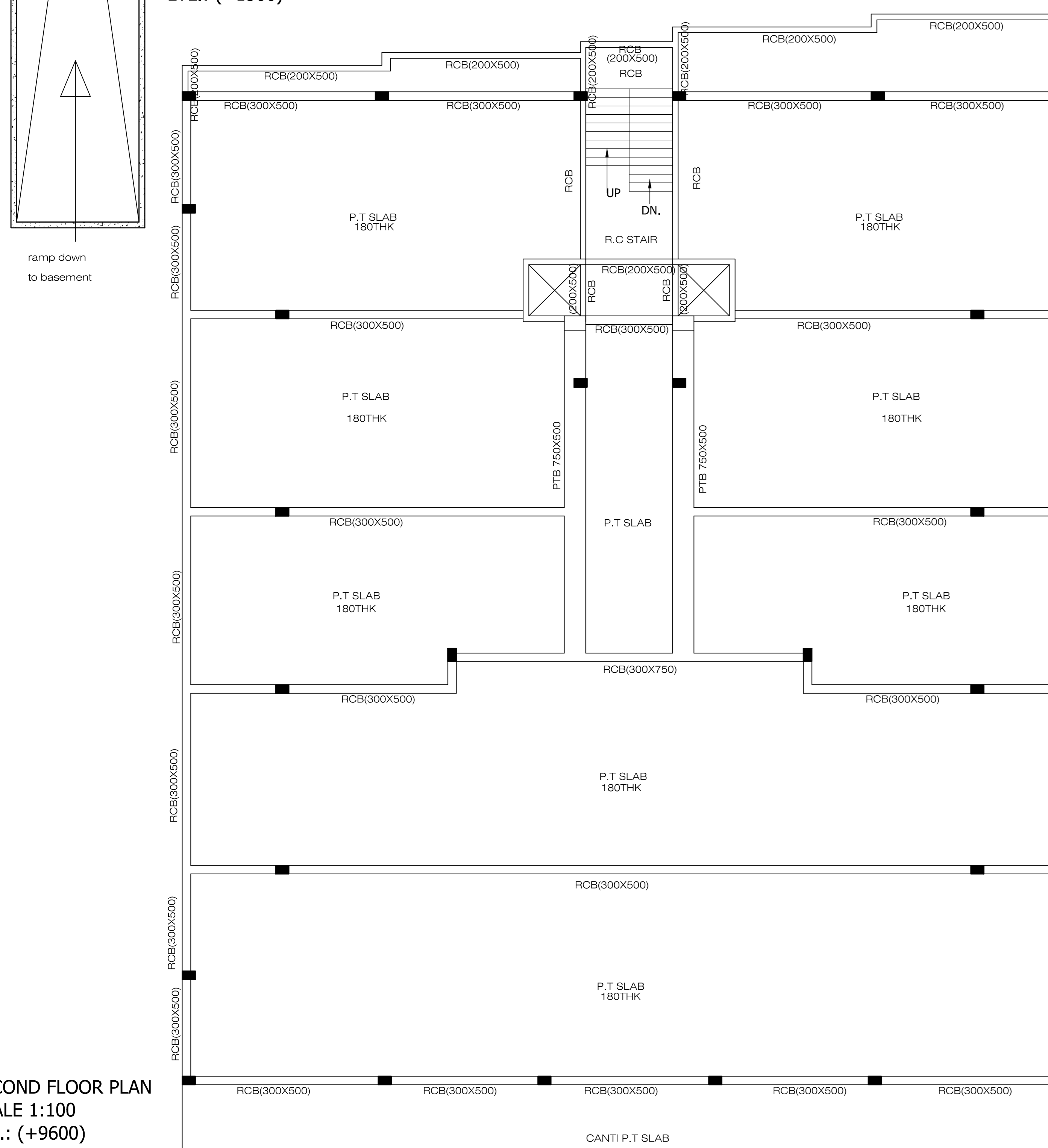
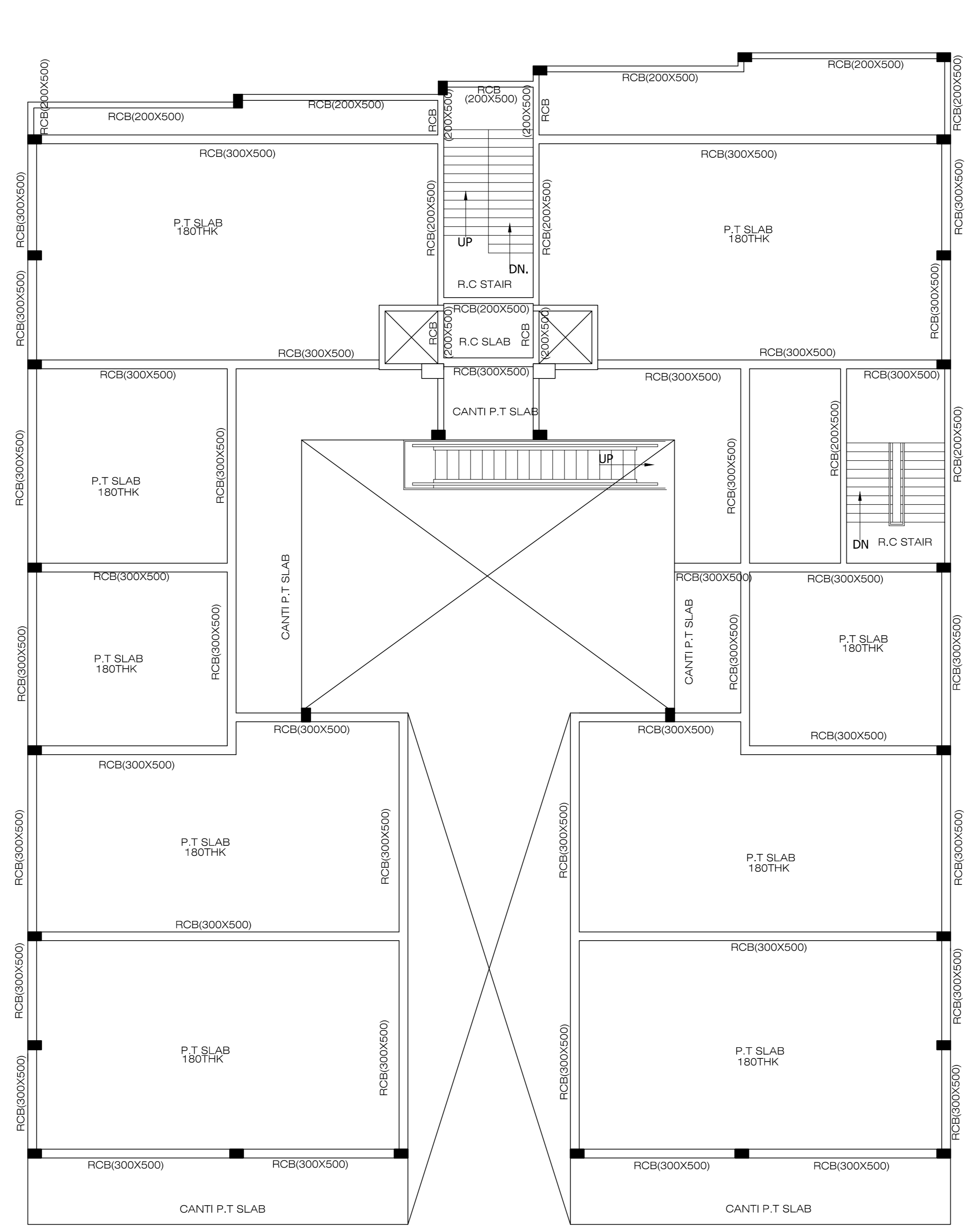


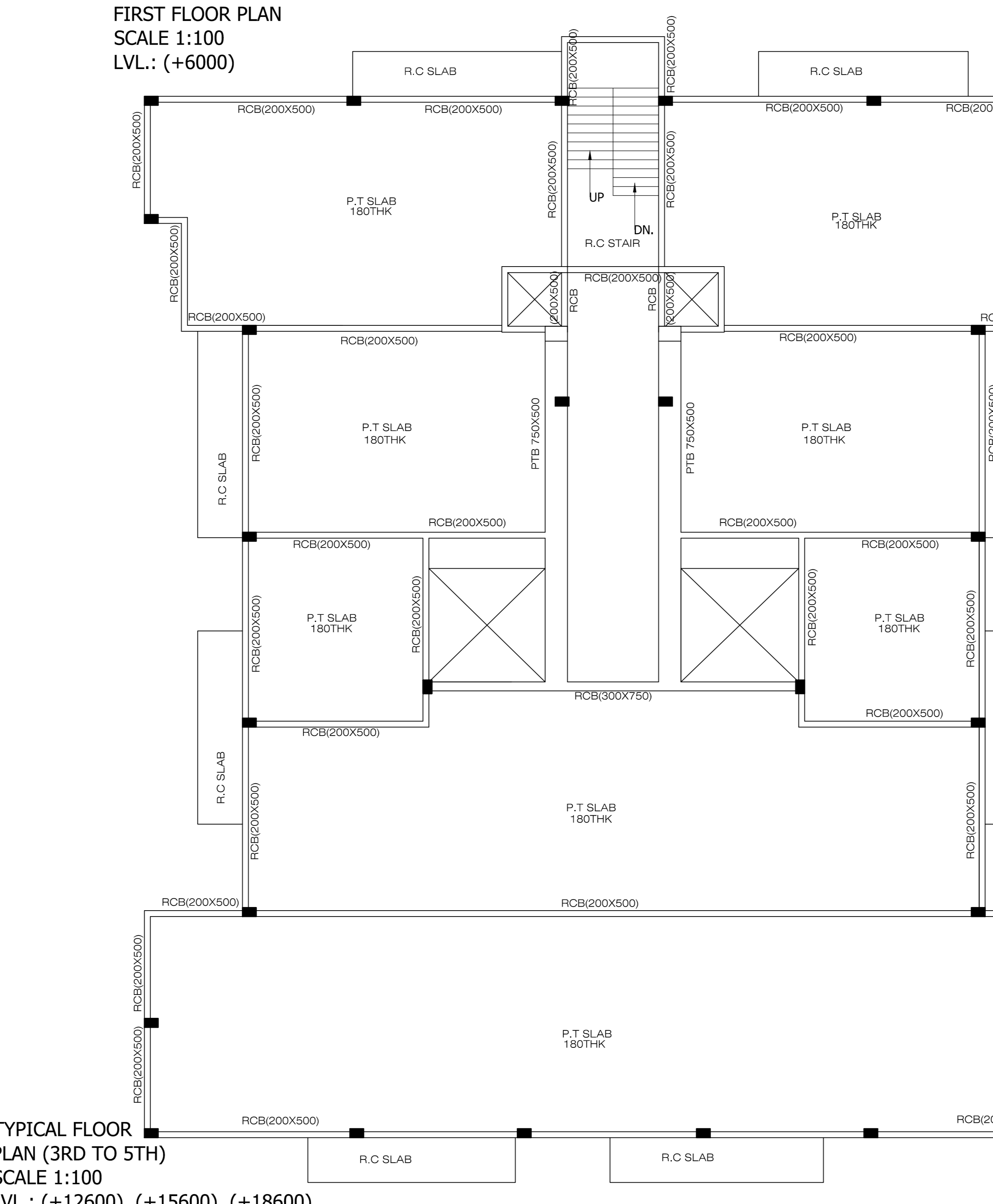
GROUND FLOOR PLAN
SCALE 1:100
LVL.: (+1500)



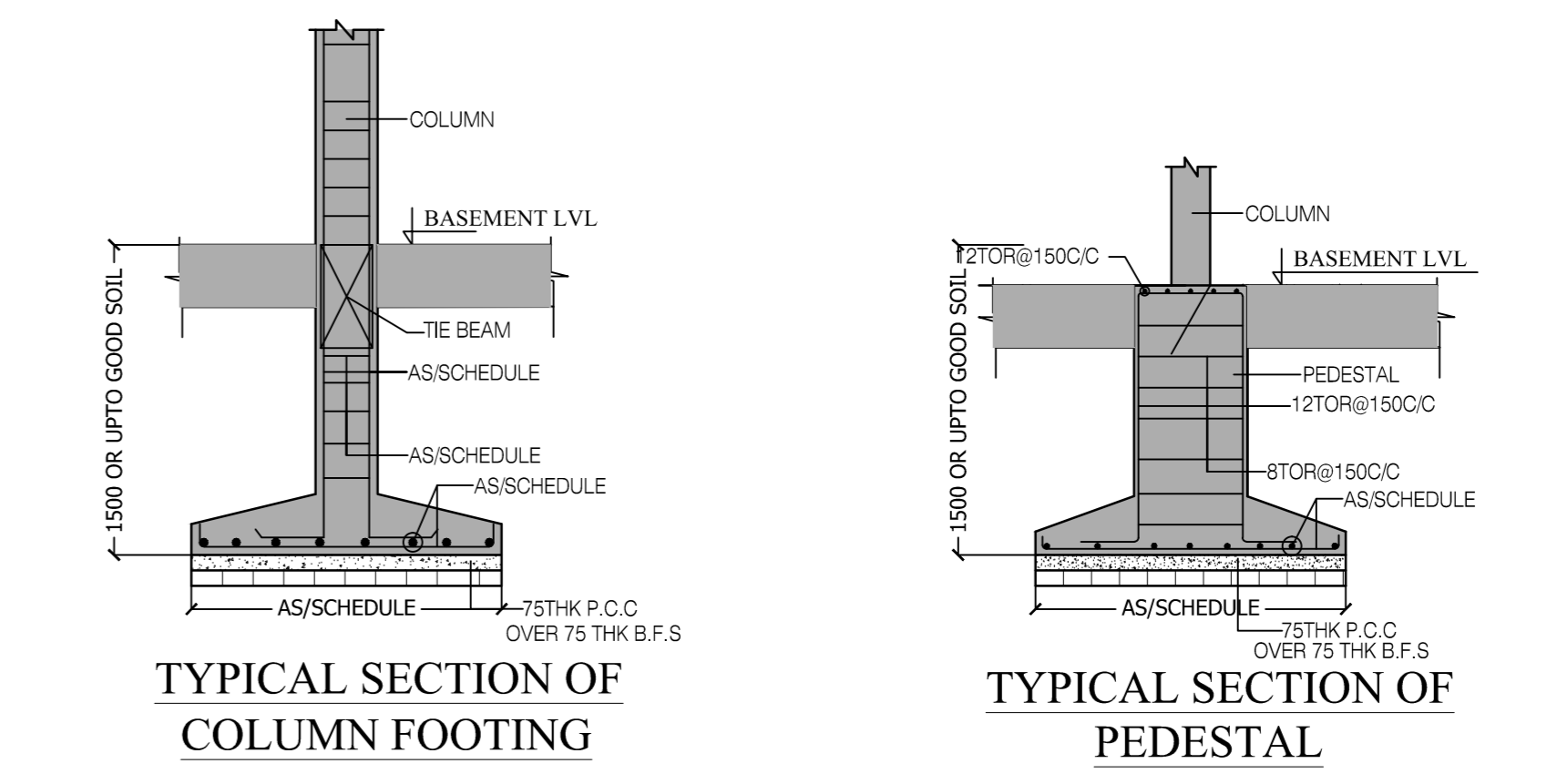
SECOND FLOOR PLAN
SCALE 1:100
LVL.: (+9600)



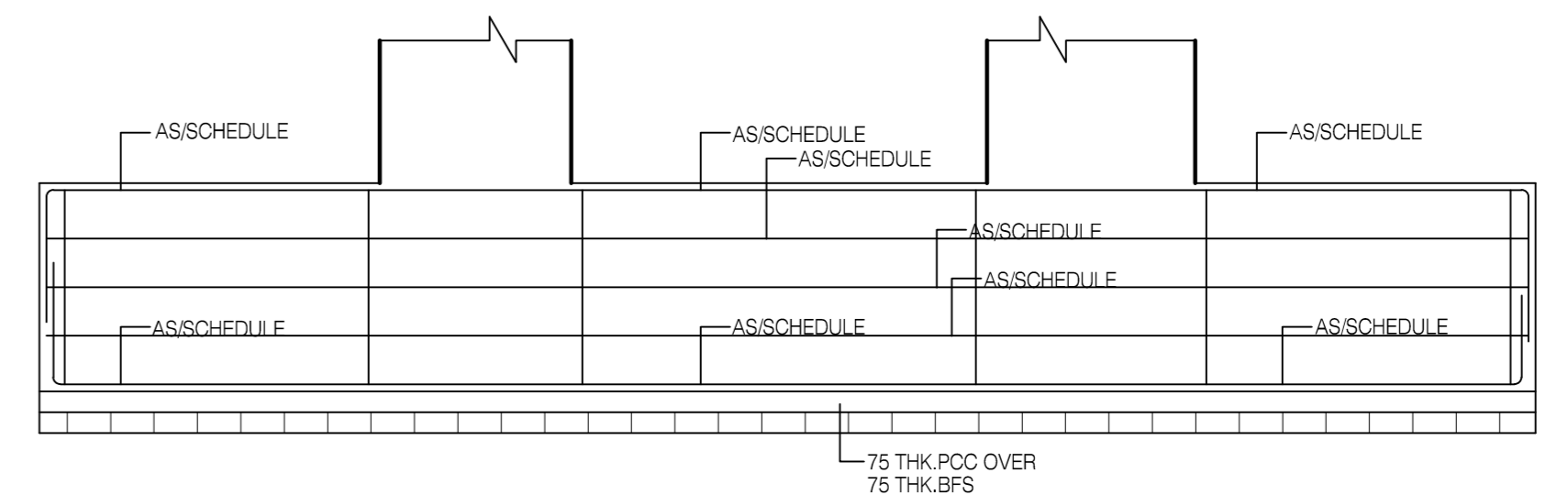
TYPICAL FLOOR PLAN (3RD TO 5TH)
SCALE 1:100
LVL.: (+12600), (+15600), (+18600)



FIRST FLOOR PLAN
SCALE 1:100
LVL.: (+6000)

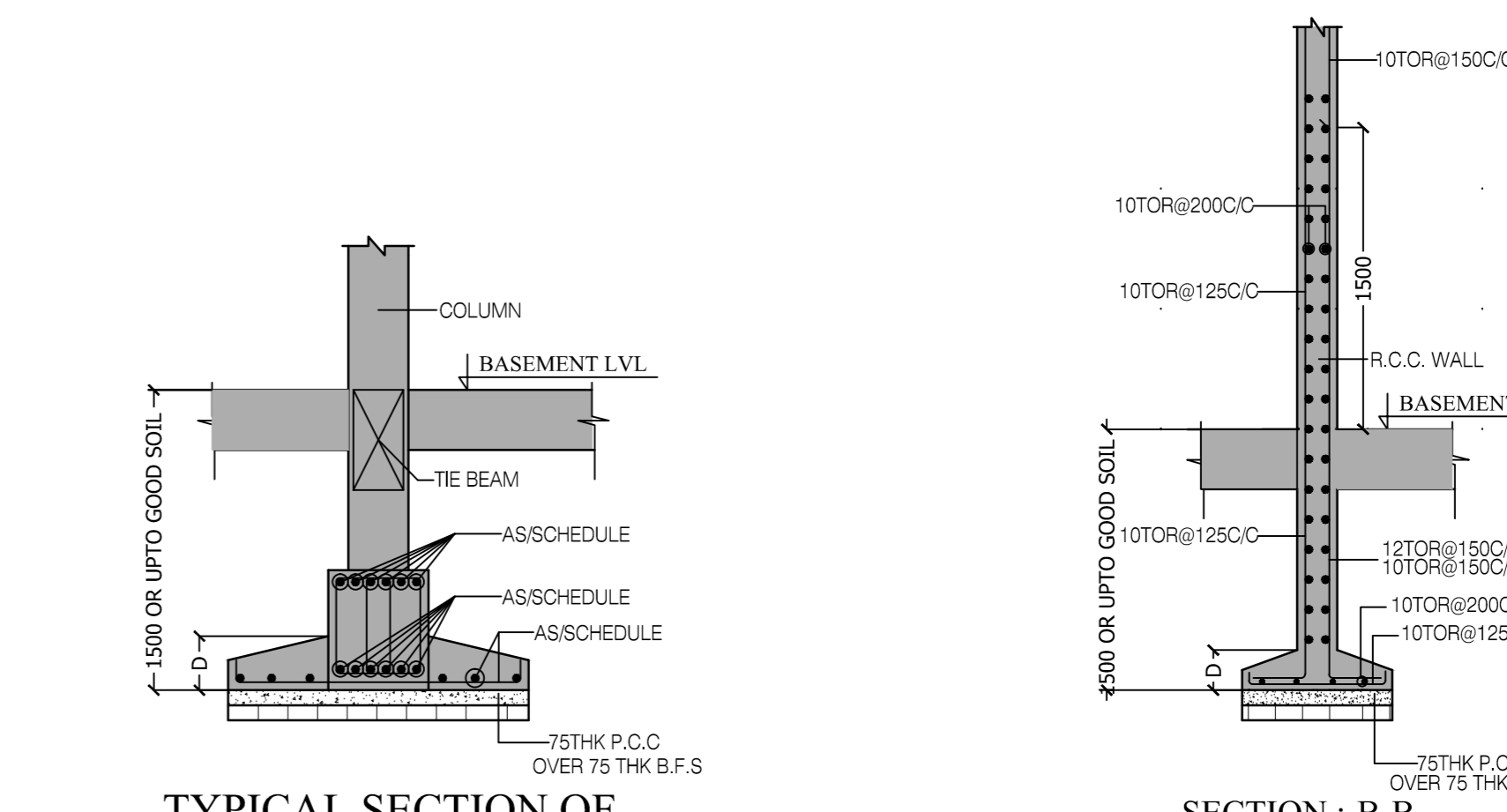


TYPICAL SECTION OF COLUMN FOOTING
TYPICAL SECTION OF PEDESTAL

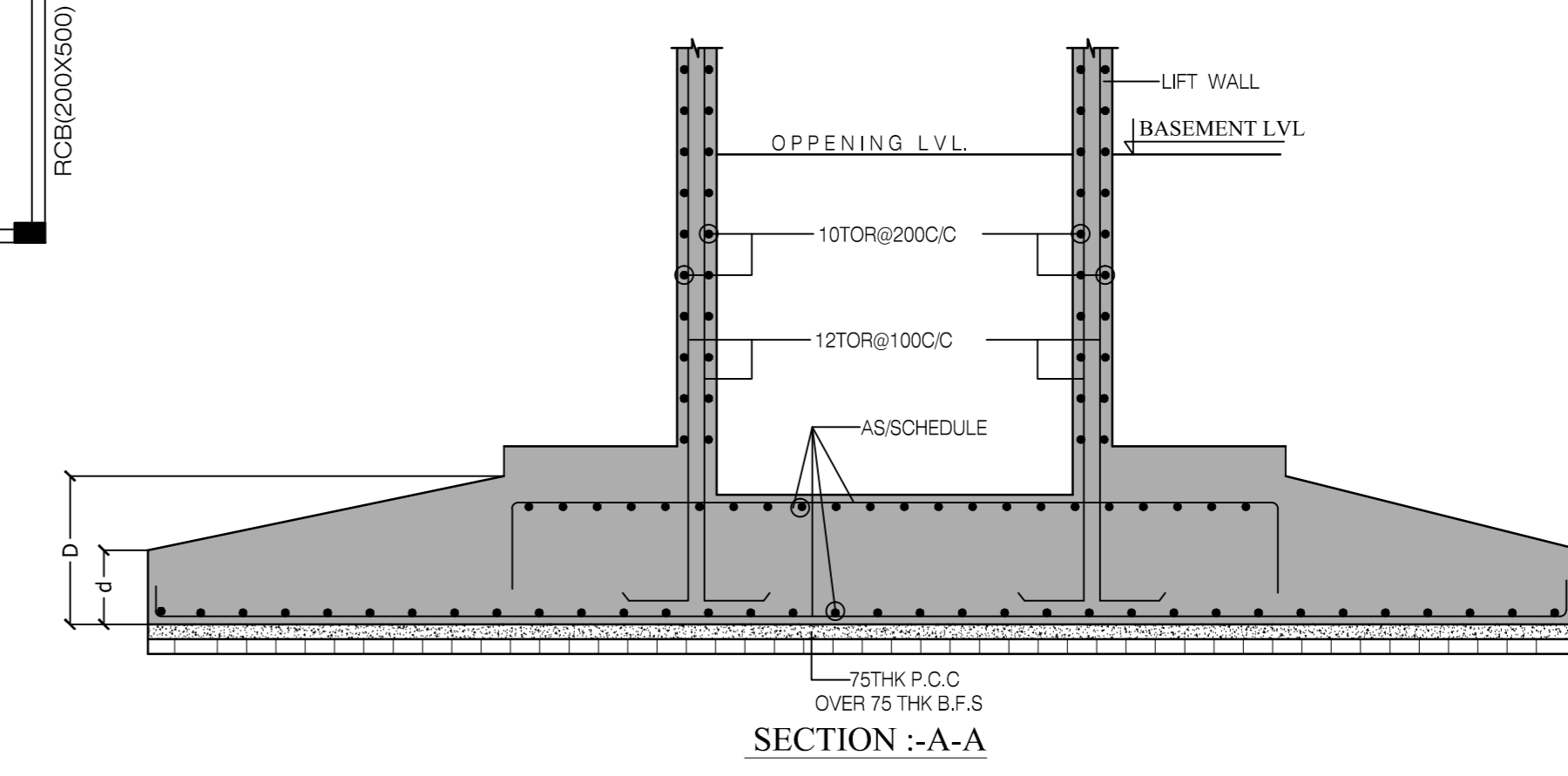


TYPICAL LONG SECTION OF FOUNDATION BEAM

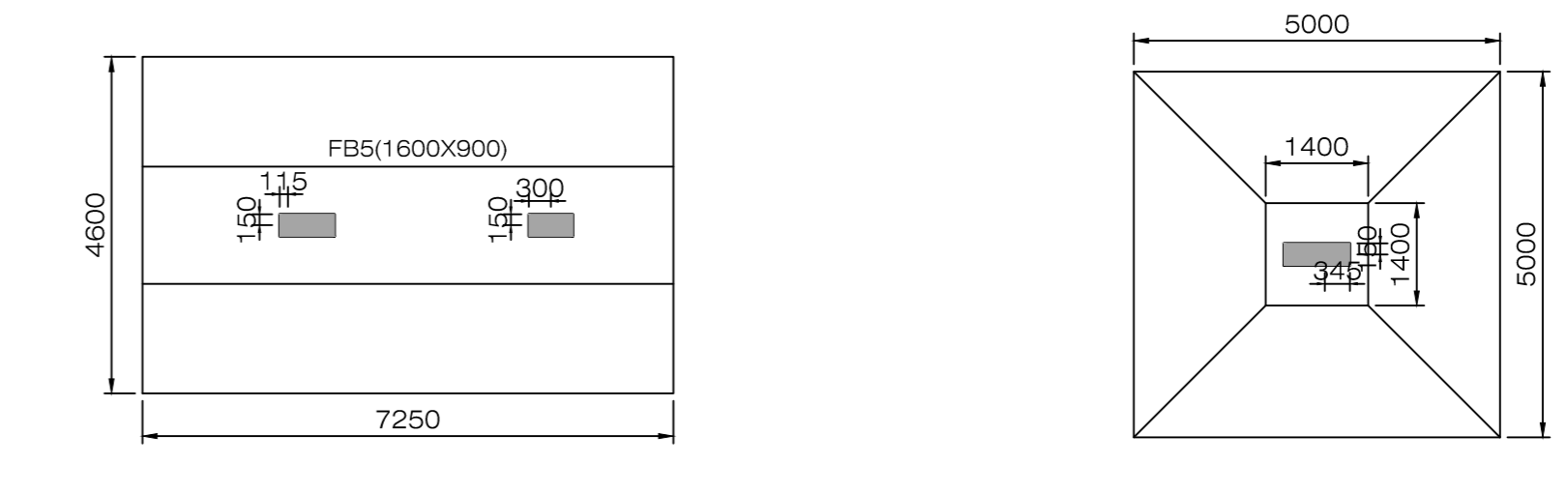
FOUNDATION BEAM SCHEDULE					
BEAM MKD.	BEAM SIZE	REINFT. ALL THROUGH	STIRRUPS AT SUPPORT	STIRRUPS AT SPAN	SIDE FACE REINFORCEMENT
	WIDE	DEPTH	TOP	BOTTOM	
FB1	800	900	6-20TOR	8-25TOR	4L-10TOR@90CC 4L-10TOR@90CC 2-12TOR (3 LAYER)
FB2	1000	900	8-20TOR	12-25TOR	6L-10TOR@100CC 6L-10TOR@100CC 2-12TOR (3 LAYER)
FB3	800	600	6-20TOR	8-20TOR	4L-10TOR@150CC 4L-10TOR@150CC 2-12TOR (3 LAYER)
FB4	1000	900	8-20TOR	10-25TOR	6L-10TOR@125CC 6L-10TOR@125CC 2-12TOR (3 LAYER)
FB5	1000	800	8-20TOR	8-20TOR	6L-10TOR@150CC 6L-10TOR@150CC 2-12TOR (3 LAYER)
FB6	800	900	6-20TOR	10-20TOR	4L-10TOR@100CC 4L-10TOR@100CC 2-12TOR (3 LAYER)



TYPICAL SECTION OF FOOTING WITH FOUNDATION BEAM
SECTION :-B-B



SECTION :-A-A



FOOTING LAYOUT

OWNER

SPECIAL OFFICER

ARCHITECT

LEGEND OF FIRE SYMBOLS

HOSE REEL HOSE	HYDRANT OUTLET	FIRE SERVICE INLET
HOOTER	AREA PROTECTED WITH AUTOMATIC SPRINKLER	AREA PROTECTED WITH AUTOMATIC CO2 INSTALLATION
DH BOX	FIRE CALL POINT	AREA PROTECTED WITH SMOKE DETECTOR ALONG WITH CONTROL PANEL
WET RISER CLIMB DOWN CORNER	S.A.A.	DCP EXTINGUISHER 10 KG

DOOR WINDOW SCHEDULE

SLWA	ITEM	QTY	SIZE	UNITS	WIDTH	HEIGHT	DESCRIPTION
1	DOOR	02	0.0	2100	2100	2100	FLUSH DOOR WITH SAL FRAME
2	DOOR	02	0.0	2100	900	2100	FLUSH DOOR WITH SAL FRAME
3	DOOR	03	0.0	2100	700	2100	FLUSH DOOR WITH SAL FRAME
4	WINDOW	01	0.0	2400	1000	1500	GLASS WINDOW WITH AL FRAME
5	WINDOW	02	0.0	2400	800	1200	GLASS WINDOW WITH AL FRAME
6	WINDOW	03	0.0	2400	1000	2100	GLASS WINDOW WITH AL FRAME
7	DOOR WINDOW	003	0.0	2400	3000	2400	SLEEPING GLASS DOOR WITH AL FRAME
8	DOOR WINDOW	002	0.0	2400	1000	2400	SLEEPING GLASS DOOR WITH AL FRAME
9	DOOR WINDOW	003	0.0	2400	1000	2400	SLEEPING GLASS DOOR WITH AL FRAME
10	DOOR WINDOW	001	0.0	2400	2400	2400	PERFORATED ROLLING SHUTTER
11	VENTILATOR	01	0.0	1000	1000	900	TOP HANG GLASS DOOR WITH AL FRAME

SPECIFICATIONS :-
 FOUNDATION : 1st class brick work in 1:6 cement mortar over 1:2:4 PCC & 1:2:4 RCC isolated footing.
 SUPER STRUCTURE : First class brick work in 1:6 cement mortar.
 FLOORING : First class RCC/Tropic 19mm marble in bedding mortar wherever applicable.
 PLASTER WORK : Internal plaster is 1:6 cement, external plaster is 1:4, 12mm thk.
 WINDOWS : MS windows and ventilators as per design painted with 2 coats of emulsion paint over 1 coat of red oxide.
 DOORS : Both side laminated 40mm thk flush door with sal wood frame. Main door will be of glass on floor springs.
 STEEL WORK : MS railing for parapet and balconies, MS rolling shutter painted with 2 coats enamel paint over 1 coat of red oxide.
 INTERNAL FINISH : 2 coats of plastic emulsion paint over 1 coat of cement primer over POP punning.
 EXTERNAL FINISH : 2 coats "Snowcem" over 1 coat of Cement primer.
 All dimensions are in Metre.

STRUCTURAL DETAILS OF GROUND FLOOR PLAN, FIRST FLOOR PLAN, SECOND FLOOR PLAN AND TYPICAL FLOOR PLAN, TYPICAL SECTION OF COLUMN FOOTING, TYPICAL SECTION OF PEDESTAL, TYPICAL LONG SECTION OF FOUNDATION BEAM, FOUNDATION BEAM SCHEDULE, TYPICAL LONG SECTION OF FOOTING WITH FOUNDATION BEAM, FOOTING LAYOUT