

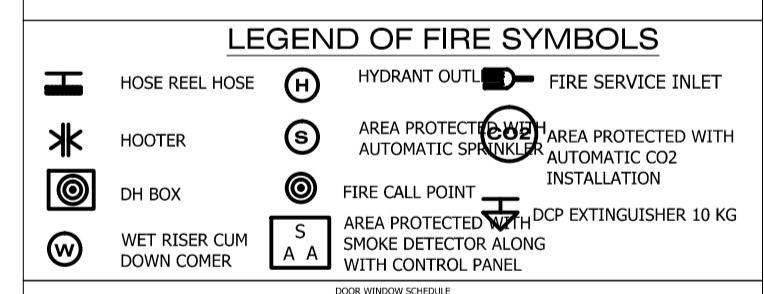
PARKING DETAILS				
SL.NO.	ITEM	as per bye laws (sqm)	Proposed (sqm)	Location
1	Residential Parking	1140	1140	Basement / Set back
2	Total	1140.00	1140.00	

WATER CONSUMPTION CHART				
SL.NO.	ITEM	LT/DAY/PERSON	NO. OF PERSONS	QUANTITY
1	Residential water consumption	200	160.00	32000.00
2	Commercial water consumption	45	566	25470.00
3	Maintenance			31530.00
4				89000.00

OWNER

SPECIAL OFFICER

ARCHITECT



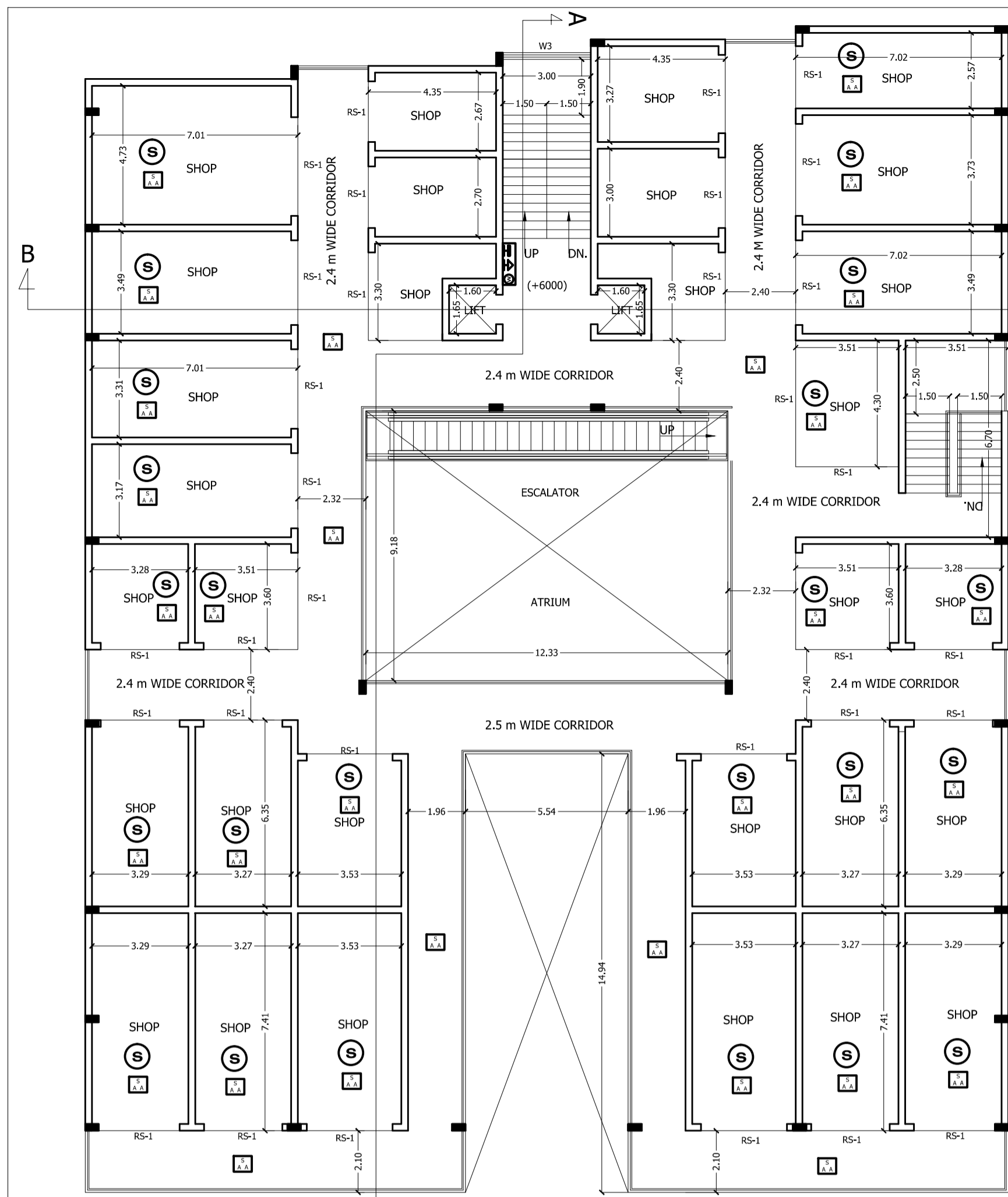
SL.NO.	ITEM	QTY	UNIT	REMARKS
1	DOOR	10	NO	FLUSH DOOR WITH GLASS
2	DOOR	10	NO	FLUSH DOOR WITH GLASS
3	DOOR	10	NO	FLUSH DOOR WITH GLASS
4	WINDOW	100	NO	GLASS WINDOW WITH ALUMINE
5	WINDOW	100	NO	GLASS WINDOW WITH ALUMINE
6	WINDOW	100	NO	GLASS WINDOW WITH ALUMINE
7	DOOR WINDOW	10	NO	SLIDING GLASS DOOR WITH ALUMINE
8	DOOR WINDOW	10	NO	SLIDING GLASS DOOR WITH ALUMINE
9	DOOR WINDOW	10	NO	SLIDING GLASS DOOR WITH ALUMINE
10	DOOR WINDOW	10	NO	SLIDING GLASS DOOR WITH ALUMINE
11	DOOR WINDOW	10	NO	SLIDING GLASS DOOR WITH ALUMINE

SPECIFICATIONS :-
FOUNDATION :- 1st class brick work in 1:6 cement mortar over 1:2:4 PCC & 1:2:4 RCC isolated footing.
SUPER STRUCTURE :- First class brick work in 1:6 cement mortar.
R.C.C.WORK :- RCC work in column, chajja, lintel, slab & beam to M150 grade.
FLOORING :- First class PCC, 19mm marble in bedding mortar wherever applicable.
PLASTER WORK :- Internal plaster is 1:6 6mm thick, external plaster is 1:4, 12mm thick.
WINDOWS :- MS window and ventilators as per design pattern with 2 coats of emulsion paint over 1 coat of red oxide.
DOORS :- Both side laminated 40mm thick flush door with oil wood frame. Main door will be of glass on floor springs.
STEEL WORK :- MS railing for parapet and balconies, MS rolling shutter painted with 2 coats enamel paint over 1 coat of red oxide.
INTERNAL FINISH :- 2 coats of plastic emulsion paint over 1 coat of cement primer over POP punning.
EXTERNAL FINISH :- 2 coats "Snowcem" over 1 coat of Cement primer.
ALL DIMENSIONS ARE IN METRE.

BASEMENT PLAN, GROUND FLOOR PLAN, DRAINAGE DETAILS, MOUZA MAP, PARKING DETAILS, WATER CONSUMPTION CHART, FORM-C.

PROPOSED APARTMENT BUILDING FOR AAKASH INDIA PROJECTS & BUILDERS PVT. LTD. PLOT NO. 683, SURVEY KHATIAN NO. 87, THANA NO. 1641, P.S. MANGO, WARD NO. 9, MANGO, MOZA PARDIH, DISTRICT EAST SINGHBHUM.

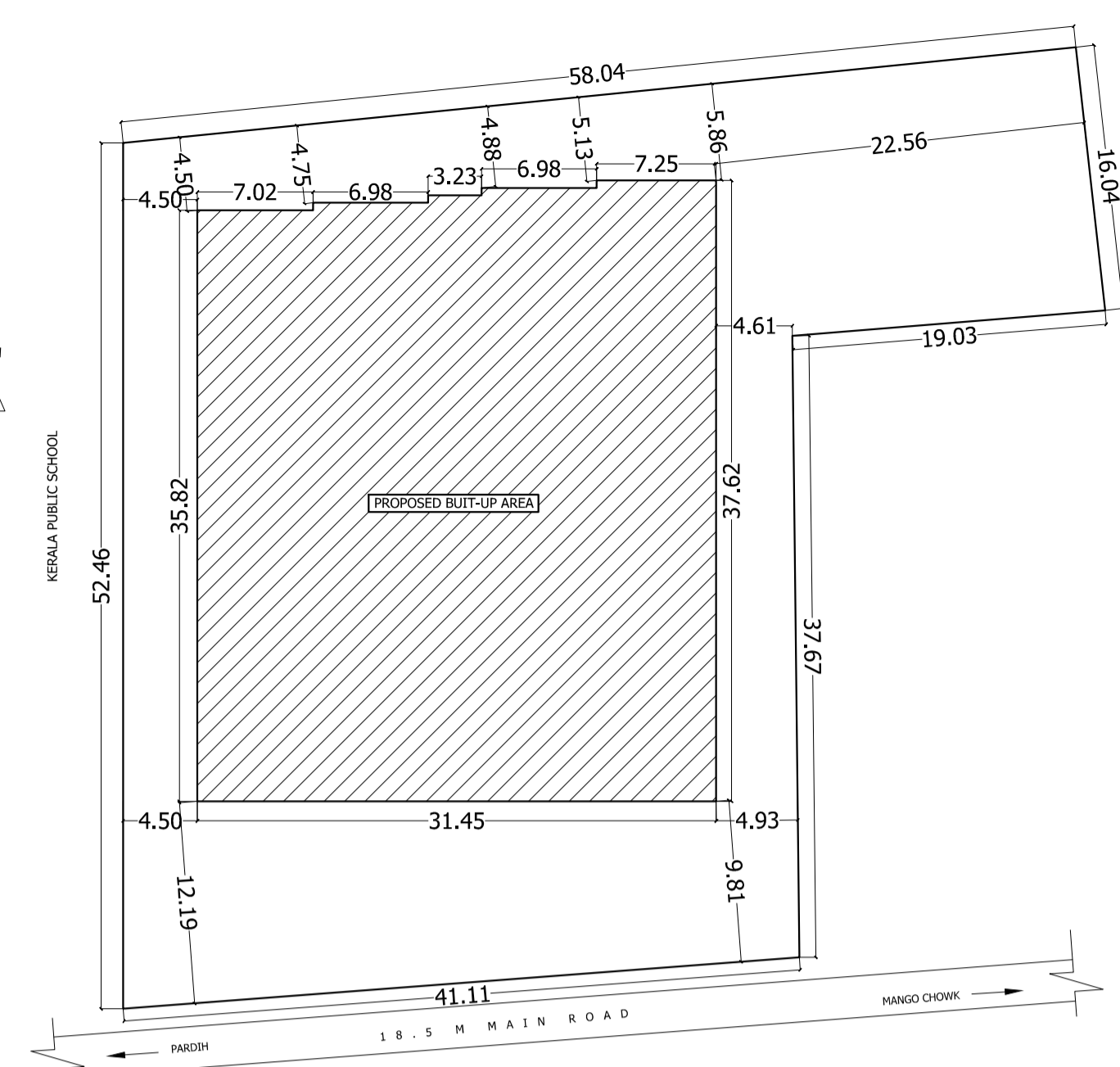
\\Privyanka\d\Dropbox\Ongoing Projects\Aakash Heights, Mango\Municipal\Certificates\form-c aakash Heights.jpg



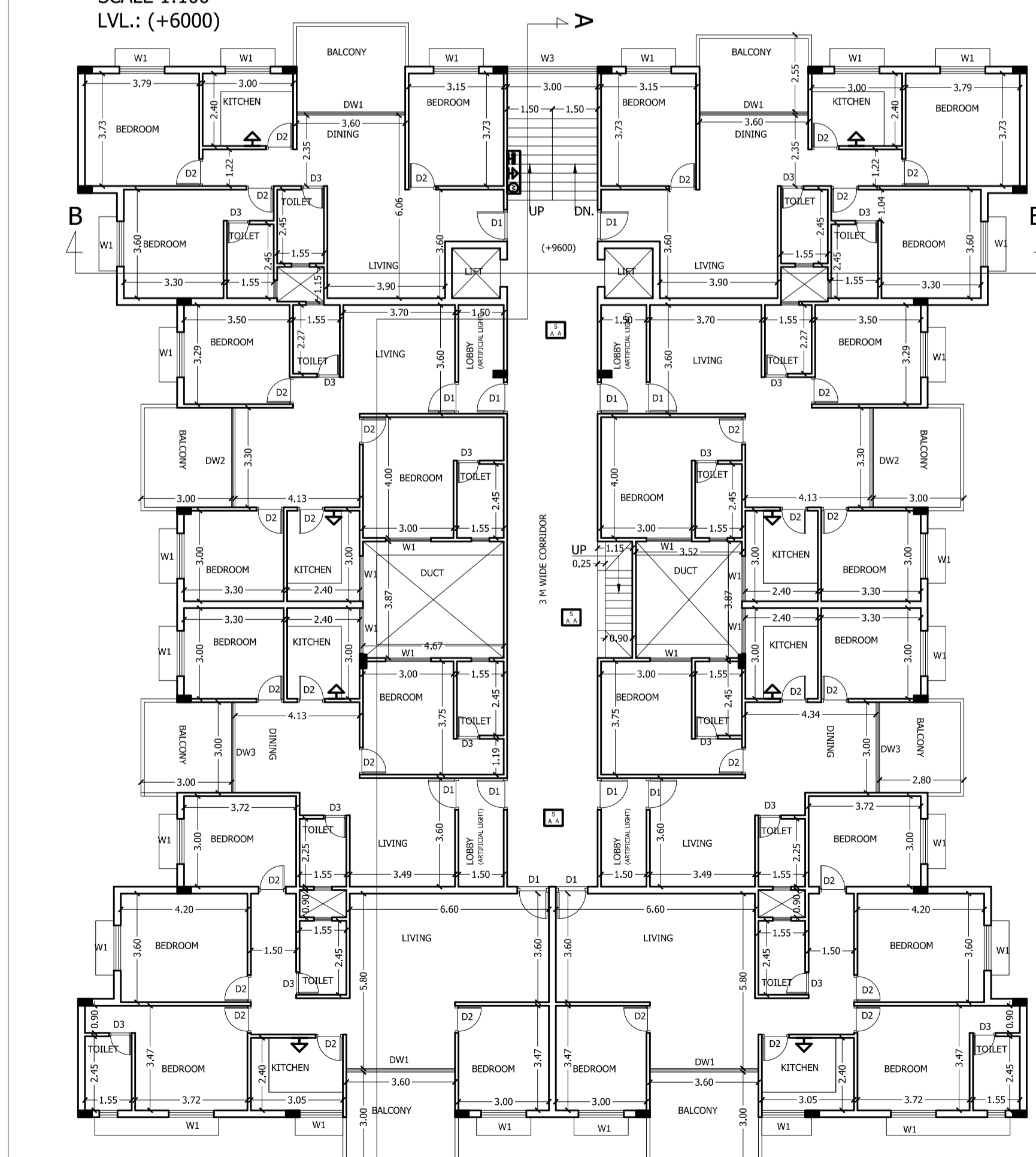
FIRST FLOOR PLAN
SCALE 1:100
LVL.: (+6000)



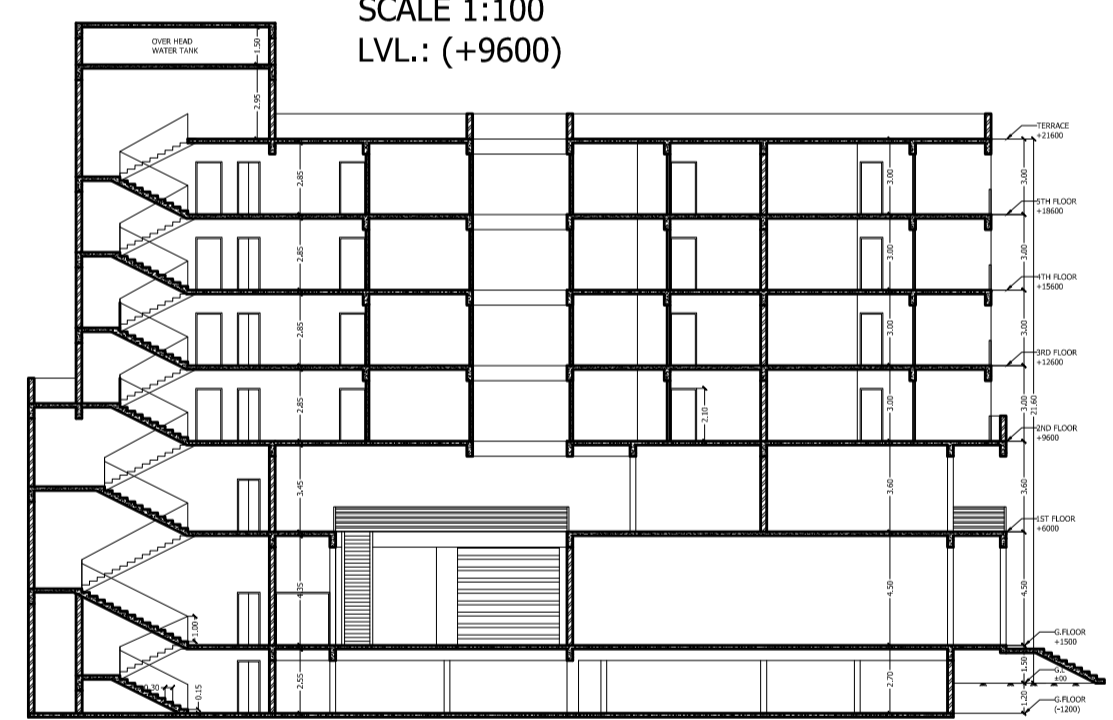
SECOND FLOOR PLAN
SCALE 1:100
LVL.: (+9600)



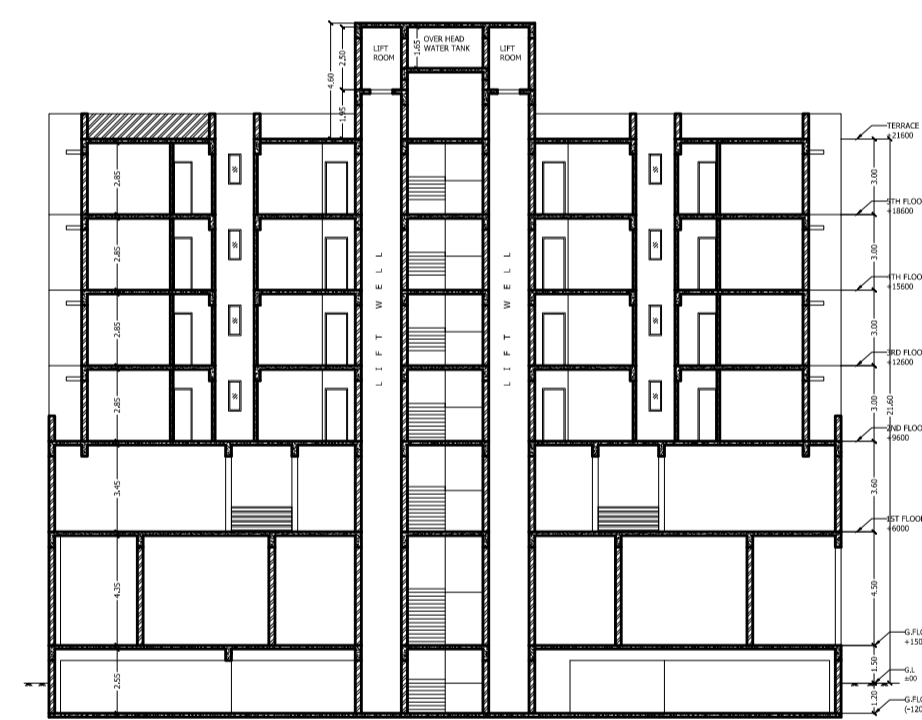
SITE PLAN
SCALE 1:250



TYPICAL FLOOR (THIRD, FOURTH, FIFTH)
SCALE 1:100
LVL.: (+12600), (+15600), (+18600)



SECTION B-B'
SCALE 1:200



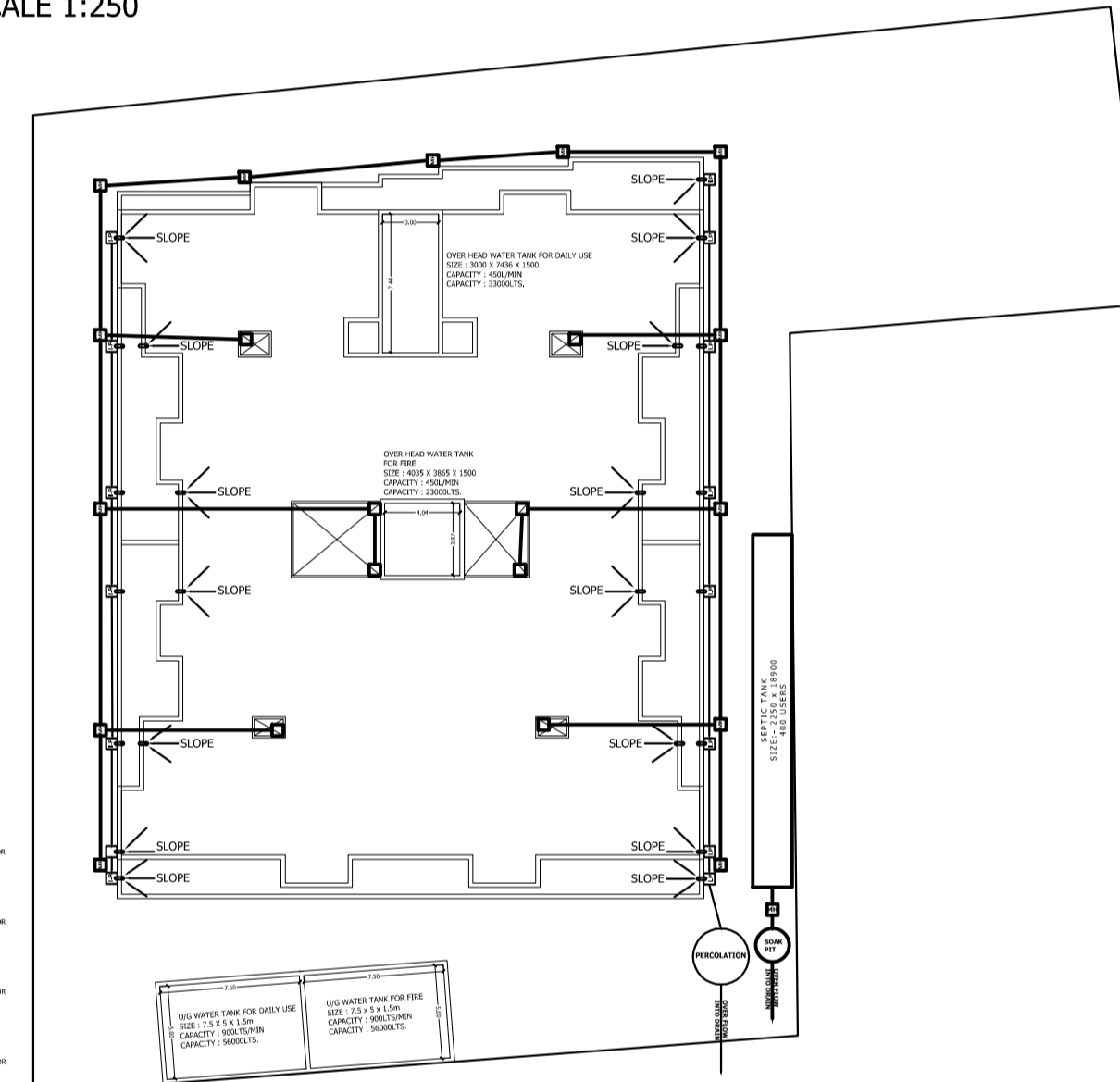
SECTION A-A'
SCALE 1:200



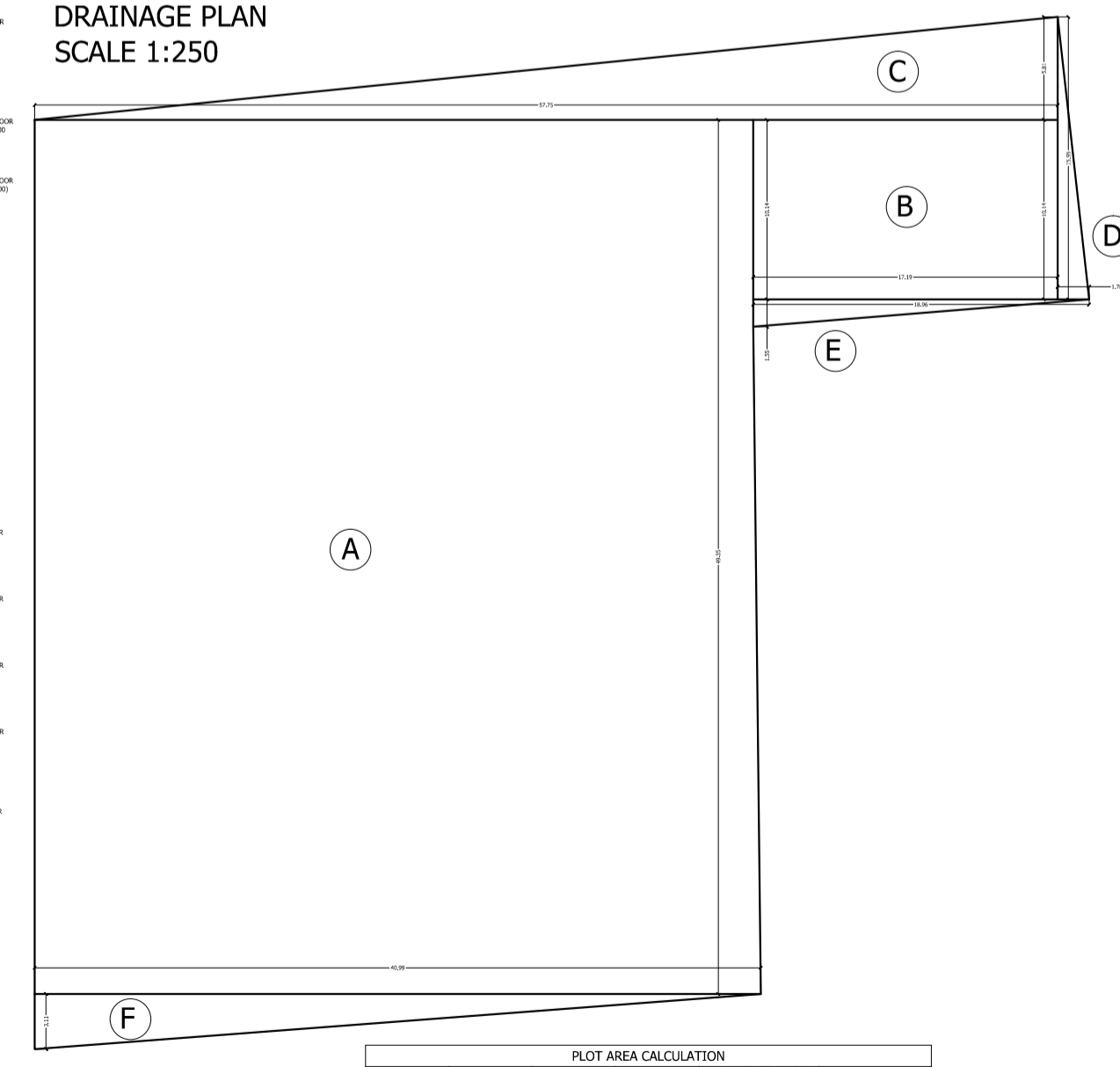
EAST SIDE ELEVATION
SCALE 1:200



SOUTH (FRONT) ELEVATION
SCALE 1:200



DRAINAGE PLAN
SCALE 1:250



PLOT AREA CALCULATION
SCALE 1:250

SL.NO.	ITEM	LENGTH(M)	WIDTH(M)	MULTIPLICATION FACTOR	TOTAL(SQ)
1	A	40.99	49.35	1.00	2022.71
2	B	12.15	10.14	1.00	123.22
3	C	57.75	5.81	0.50	167.73
4	D	1.78	15.95	0.50	14.17
5	E	18.96	1.58	0.50	15.02
6	F	40.99	3.11	0.50	63.78
	TOTAL				2457.63

OWNER

SPECIAL OFFICER

ARCHITECT

LEGEND OF FIRE SYMBOLS

	HOSE REEL HOSE	HYDRANT OUTLET	FIRE SERVICE INLET
	HOOVER	AREA PROTECTED WITH AUTOMATIC CO2	AREA PROTECTED WITH AUTOMATIC CO2
	FIRE CALL POINT	AREA PROTECTED WITH SMOKE DETECTOR ALONG WITH CONTROL PANEL	DCP EXTINGUISHER 10 KG

DOOR WINDOW SCHEDULE

SL.NO.	ITEM	QTY	UNIT	HEIGHT	WIDTH	DESCRIPTION
1	DOOR	82	2100	1000	2100	FLOOR DOOR WITH SAL FRAME
2	DOOR	82	2100	900	2100	FLOOR DOOR WITH SAL FRAME
3	DOOR	82	2100	750	2100	FLOOR DOOR WITH SAL FRAME
4	WINDOW	960	2400	1500	1500	GLASS WINDOW WITH AL FRAME
5	WINDOW	960	2400	1200	1200	GLASS WINDOW WITH AL FRAME
6	WINDOW	960	2400	900	2100	GLASS WINDOW WITH AL FRAME
7	DOOR WINDOW	82	2400	2400	2400	SLEEPING GLASS DOOR WITH AL FRAME
8	DOOR WINDOW	82	2400	1800	2400	SLEEPING GLASS DOOR WITH AL FRAME
9	DOOR WINDOW	82	2400	1200	2400	SLEEPING GLASS DOOR WITH AL FRAME
10	DOOR WINDOW	82	2400	900	2400	REPARTITIONED SLEEPING WINDOW
11	WINDOW	111	1500	1500	900	TOP HUNG GLASS DOOR WITH AL FRAME

SPECIFICATIONS:-
 FOUNDATION : 1st class brick work in 1:6 cement mortar over 1:2:4 PCC & 1:2:4 RCC isolated footing.
 SUPER STRUCTURE : First class brick work in 1:6 cement mortar.
 R.C.C WORK : RCC work in column, chajja, lintel, slab & beam to M150 grade.
 FLOORING : First class PCC, 1" mosaic, 19mm marble in bedding mortar wherever applicable.
 PLASTER WORK : Internal plaster is 1:6 cement, external plaster is 1:4, 1:3mm thick.
 WINDOWS : MS window and ventilators as per design painted with 2 coats of emulsion paint over 1 coat of red oxide.
 DOORS : Both side laminated 40mm thick flush door with sal wood frame. Main door will be of glass on floor spring.
 STEEL WORK : MS railing for parapet and balconies. MS rolling shutter painted with 2 coats emulsion paint over 1 coat of red oxide.
 INTERNAL FINISH : 2 coats of plastic emulsion paint over 1 coat of cement primer over POP punning.
 EXTERNAL FINISH : 2 coats "Snowcem" over 1 coat of cement primer.
 ALL DIMENSIONS ARE IN METRE.

FIRST FLOOR PLAN, TYPICAL FLOOR PLAN, SECTIONS, ELEVATIONS, DRAINAGE PLAN AND PLOT AREA CALCULATION.

PROPOSED APARTMENT BUILDING FOR AAKASH INDIA PROJECTS & BUILDERS PVT. LTD.
 PLOT NO. 683, SURVEY KHATTIAN NO. 87, THANA NO. 1641, P.S. MANGO, WARD NO. 9, MANGO, MOUZA PARDIH, DISTRICT EAST SINGHBHUM.