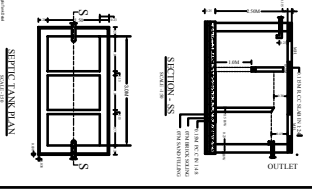
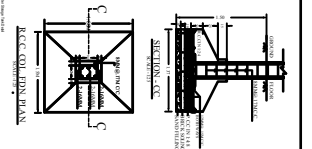
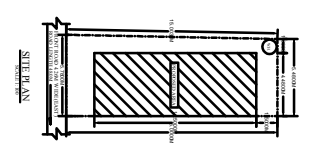
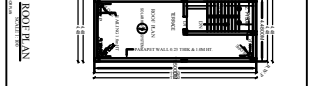
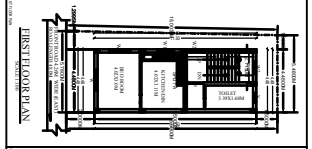
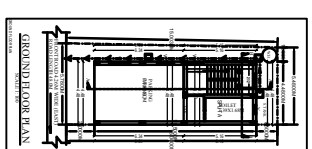
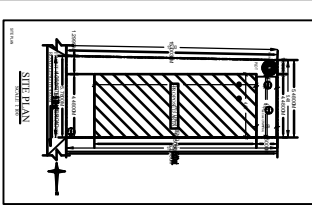
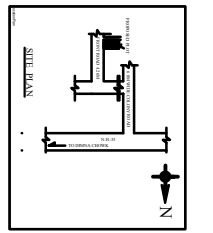
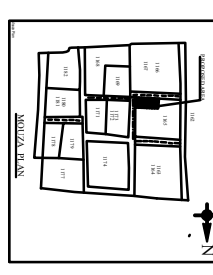
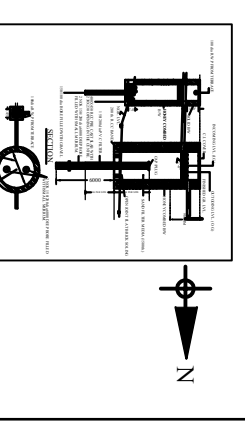
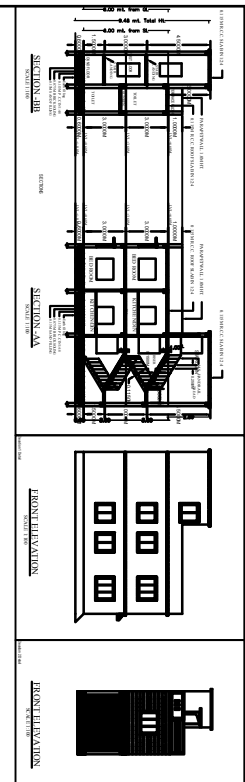


SKEDS PLAN, THE COOR CHAMPA SNAU



SCHEDULE OF OPENINGS

NO.	DESCRIPTION	NO.	DESCRIPTION
1	DOOR	1	DOOR
2	WINDOW	2	WINDOW
3	...	3	...

GENERAL SPECIFICATION

1. ALL WORK SHALL BE DONE ACCORDING TO THE LATEST EDITIONS OF THE SINGAPORE BUILDING REGULATIONS AND THE SINGAPORE STANDARD SPECIFICATIONS FOR BUILDING MATERIALS AND WORKMANSHIP.

2. THE CONTRACTOR SHALL BE RESPONSIBLE FOR OBTAINING ALL NECESSARY PERMITS AND APPROVALS FROM THE RELEVANT AUTHORITIES.

3. THE CONTRACTOR SHALL MAINTAIN ACCESS TO ALL ADJACENT PROPERTIES AND PUBLIC UTILITIES AT ALL TIMES.

4. THE CONTRACTOR SHALL BE RESPONSIBLE FOR PROTECTING ALL EXISTING SERVICES AND STRUCTURES TO REMAIN.

5. THE CONTRACTOR SHALL MAINTAIN A NEAT AND ORDERLY WORK SITE AT ALL TIMES.

6. THE CONTRACTOR SHALL BE RESPONSIBLE FOR THE DISPOSAL OF ALL WASTE MATERIALS AND DEBRIS.

7. THE CONTRACTOR SHALL BE RESPONSIBLE FOR THE PROTECTION OF ALL NEIGHBORHOODS FROM DUST, NOISE AND VIBRATION.

8. THE CONTRACTOR SHALL BE RESPONSIBLE FOR THE PROTECTION OF ALL ADJACENT PROPERTIES FROM DAMAGE.

9. THE CONTRACTOR SHALL BE RESPONSIBLE FOR THE PROTECTION OF ALL PUBLIC UTILITIES FROM DAMAGE.

10. THE CONTRACTOR SHALL BE RESPONSIBLE FOR THE PROTECTION OF ALL EXISTING SERVICES FROM DAMAGE.

REVISIONS

NO.	DESCRIPTION	DATE
1
2

LIST OF MATERIALS

NO.	DESCRIPTION	QTY	UNIT
1
2

LIST OF WORKS

NO.	DESCRIPTION	QTY	UNIT
1
2

LIST OF WORKS

NO.	DESCRIPTION	QTY	UNIT
1
2

LIST OF MATERIALS

NO.	DESCRIPTION	QTY	UNIT
1
2