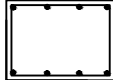
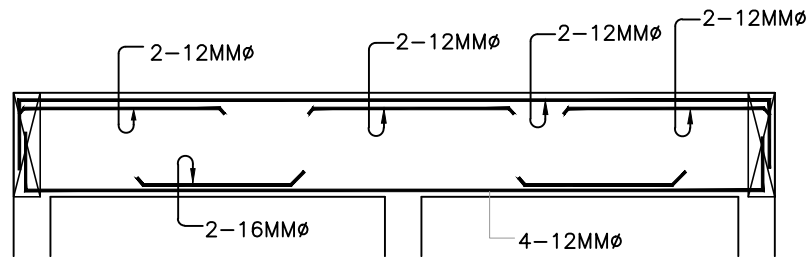
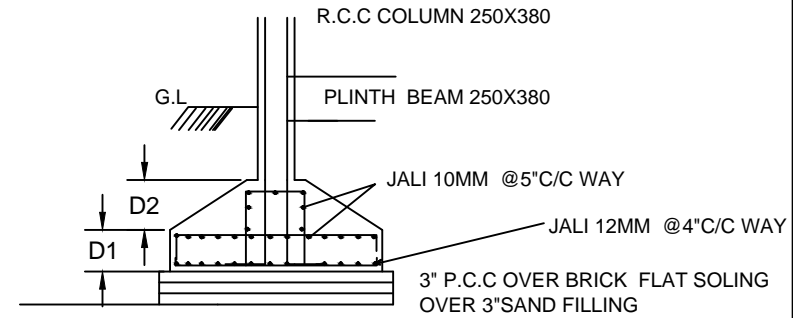
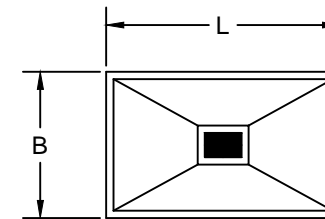


COLUMN SCHEDULE								
COLUMN	FOOTING SIZE IN MTR					ZALI	COLUMN SIZE	REINFORCEMENT DETAIL GROUND FLOOR
	L	B	D	D1	D2			
C1	2.2	1.8	2.0	0.45	0.60	DOUBLE ZALI 12MM @4"C/C TOP AND BOTTAM	0.25X0.38	 REIN: 8-20 STIRRUPS: 8MMØ @6" C/C



DETAILS OF PLINTH BEAM (250X380)



DETAIL OF COL & FOOTING