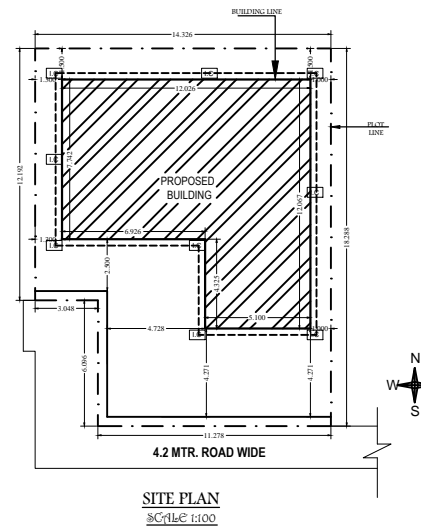
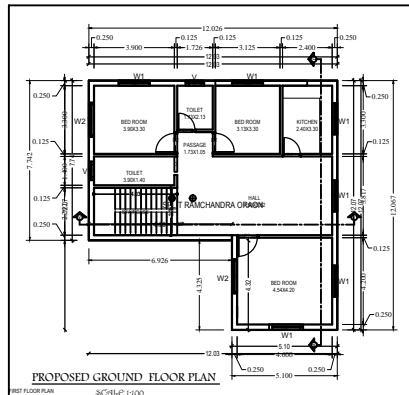
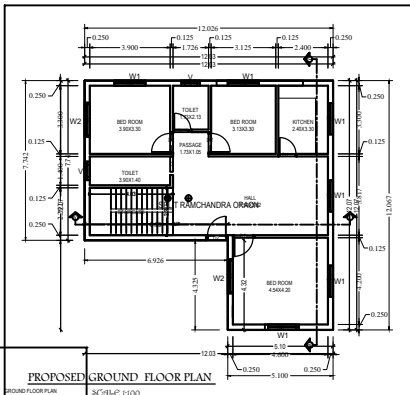
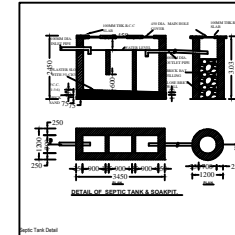
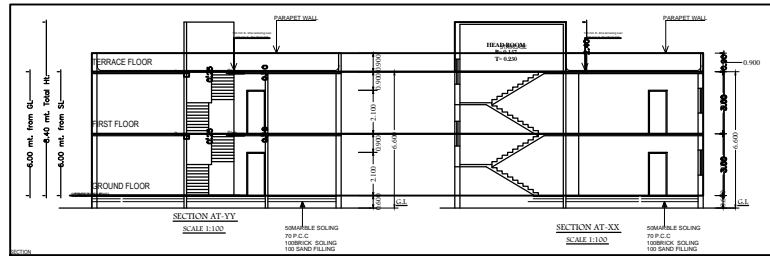
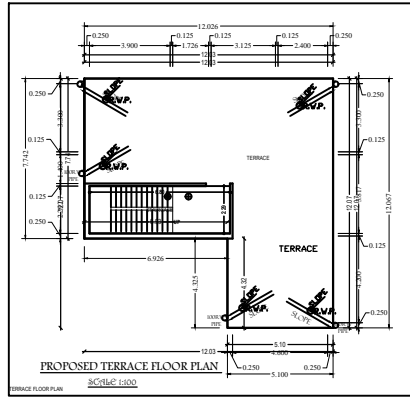
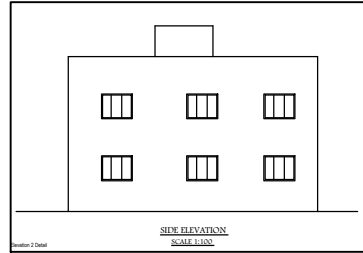
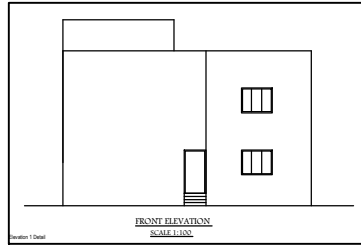
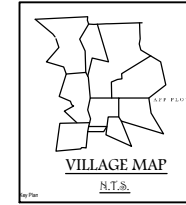
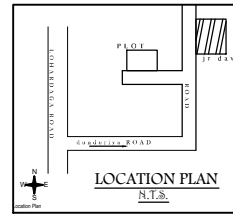
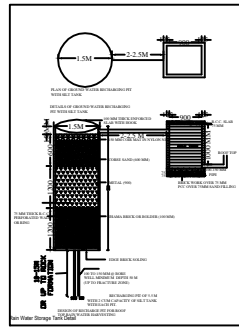
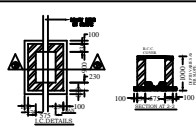
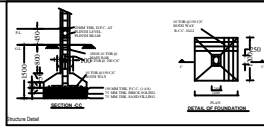


PRODUCED BY AN AUTODESK EDUCATIONAL PRODUCT

Project Title -RAMCHANDRA ORAON

PRODUCED BY AN AUTODESK EDUCATIONAL PRODUCT

PRODUCED BY AN AUTODESK EDUCATIONAL PRODUCT



SCHEDULE OF OPENINGS			
SL.NO.	TYPE	SIZE	DESCRIPTION
1.	D	0.75X2.10	Sill wood chauthat & Commercial Ply Shutter
2.	D1	0.90X2.10	Sill wood chauthat & Commercial Ply Shutter
3.	D2	0.975X2.10	Sill wood chauthat & Commercial Ply Shutter
4.	D3	1.05X2.10	Sill wood chauthat & Commercial Ply Shutter
5.	V	0.60X0.60	Fully glazed Al Sliding window
6.	W	0.90X0.90	Fully glazed Al Sliding window
7.	W1	0.90X1.20	Fully glazed Al Sliding window
8.	W2	1.20X1.20	Fully glazed Al Sliding window
9.	W3	1.50X1.20	Fully glazed Al Sliding window

- SPECIFICATION**
- R.C.C.(1-2-4) IN COLUMN FOUNDATION WITH R.C.C. TIE BEAM
  - SUPER STRUCTURE 1ST CLASS BRICK WORK IN C.M (1-4)
  - R.C.C (1-2-4) IN LINTEL, CHAJJA, ROOF SLAB, STAIRCASE COLUMN E.T.C. AS PER DESIGN ENGINEER
  - SAL WOOD CHAUKHAT IN DOORS & ALUMINIUM FRAME IN WINDOWS.
  - 12 MM CEMENT PLASTER IN C.M (1-4) INSIDE & OUTSIDE WALL SURFACE.
  - 6MM CEMENT PLASTER IN C.M (1-4) IN CEILING.
  - DOOR SHUTTER - COMMERCIAL PLY FLUSH DOOR SHUTTER.
  - WINDOW SHUTTER ALUMINIUM GLAZED SLIDING PANEL.
  - CERAMICS TILES FLOORING IN ALL ROOMS.
  - SNOWVICEM FINISHING IN ALL ROOMS & OUT SIDE WALL.

**AREA CALCULATION**

NO.	DESCRIPTION	AREA (SQ.M)
1.	FLOOR AREA	11.274
2.	WALL AREA	11.274
3.	CEILING AREA	11.274
4.	ROOF AREA	11.274
5.	TERRACE AREA	11.274
6.	STAIRCASE AREA	11.274
7.	TOILET AREA	11.274
8.	PASSAGE AREA	11.274
9.	ROOM AREA	11.274
10.	CHAJJA AREA	11.274
11.	CHALKHAT AREA	11.274
12.	SHUTTER AREA	11.274
13.	GLAZED WINDOW AREA	11.274
14.	GLAZED DOOR AREA	11.274
15.	GLAZED WINDOW AREA	11.274
16.	GLAZED WINDOW AREA	11.274
17.	GLAZED WINDOW AREA	11.274
18.	GLAZED WINDOW AREA	11.274
19.	GLAZED WINDOW AREA	11.274
20.	GLAZED WINDOW AREA	11.274
21.	GLAZED WINDOW AREA	11.274
22.	GLAZED WINDOW AREA	11.274
23.	GLAZED WINDOW AREA	11.274
24.	GLAZED WINDOW AREA	11.274
25.	GLAZED WINDOW AREA	11.274
26.	GLAZED WINDOW AREA	11.274
27.	GLAZED WINDOW AREA	11.274
28.	GLAZED WINDOW AREA	11.274
29.	GLAZED WINDOW AREA	11.274
30.	GLAZED WINDOW AREA	11.274
31.	GLAZED WINDOW AREA	11.274
32.	GLAZED WINDOW AREA	11.274
33.	GLAZED WINDOW AREA	11.274
34.	GLAZED WINDOW AREA	11.274
35.	GLAZED WINDOW AREA	11.274
36.	GLAZED WINDOW AREA	11.274
37.	GLAZED WINDOW AREA	11.274
38.	GLAZED WINDOW AREA	11.274
39.	GLAZED WINDOW AREA	11.274
40.	GLAZED WINDOW AREA	11.274
41.	GLAZED WINDOW AREA	11.274
42.	GLAZED WINDOW AREA	11.274
43.	GLAZED WINDOW AREA	11.274
44.	GLAZED WINDOW AREA	11.274
45.	GLAZED WINDOW AREA	11.274
46.	GLAZED WINDOW AREA	11.274
47.	GLAZED WINDOW AREA	11.274
48.	GLAZED WINDOW AREA	11.274
49.	GLAZED WINDOW AREA	11.274
50.	GLAZED WINDOW AREA	11.274
51.	GLAZED WINDOW AREA	11.274
52.	GLAZED WINDOW AREA	11.274
53.	GLAZED WINDOW AREA	11.274
54.	GLAZED WINDOW AREA	11.274
55.	GLAZED WINDOW AREA	11.274
56.	GLAZED WINDOW AREA	11.274
57.	GLAZED WINDOW AREA	11.274
58.	GLAZED WINDOW AREA	11.274
59.	GLAZED WINDOW AREA	11.274
60.	GLAZED WINDOW AREA	11.274
61.	GLAZED WINDOW AREA	11.274
62.	GLAZED WINDOW AREA	11.274
63.	GLAZED WINDOW AREA	11.274
64.	GLAZED WINDOW AREA	11.274
65.	GLAZED WINDOW AREA	11.274
66.	GLAZED WINDOW AREA	11.274
67.	GLAZED WINDOW AREA	11.274
68.	GLAZED WINDOW AREA	11.274
69.	GLAZED WINDOW AREA	11.274
70.	GLAZED WINDOW AREA	11.274
71.	GLAZED WINDOW AREA	11.274
72.	GLAZED WINDOW AREA	11.274
73.	GLAZED WINDOW AREA	11.274
74.	GLAZED WINDOW AREA	11.274
75.	GLAZED WINDOW AREA	11.274
76.	GLAZED WINDOW AREA	11.274
77.	GLAZED WINDOW AREA	11.274
78.	GLAZED WINDOW AREA	11.274
79.	GLAZED WINDOW AREA	11.274
80.	GLAZED WINDOW AREA	11.274
81.	GLAZED WINDOW AREA	11.274
82.	GLAZED WINDOW AREA	11.274
83.	GLAZED WINDOW AREA	11.274
84.	GLAZED WINDOW AREA	11.274
85.	GLAZED WINDOW AREA	11.274
86.	GLAZED WINDOW AREA	11.274
87.	GLAZED WINDOW AREA	11.274
88.	GLAZED WINDOW AREA	11.274
89.	GLAZED WINDOW AREA	11.274
90.	GLAZED WINDOW AREA	11.274
91.	GLAZED WINDOW AREA	11.274
92.	GLAZED WINDOW AREA	11.274
93.	GLAZED WINDOW AREA	11.274
94.	GLAZED WINDOW AREA	11.274
95.	GLAZED WINDOW AREA	11.274
96.	GLAZED WINDOW AREA	11.274
97.	GLAZED WINDOW AREA	11.274
98.	GLAZED WINDOW AREA	11.274
99.	GLAZED WINDOW AREA	11.274
100.	GLAZED WINDOW AREA	11.274

PROPOSED RESIDENTIAL BUILDING FOR  
SRI RAMCHANDARA ORAON S/O - LATE CHHANDU ORAON,  
ON R.S PLOT NO - 393 -  
KHATA NO - 2, THANA NO - 44,  
AT VILLAGE - DUNDURYA,  
THANA - GUMLA,  
DIST - GUMLA, JHARKHAND.

SIGNATURE OF APPLICANT'S -  
SIGNATURE OF ARCHITECT -