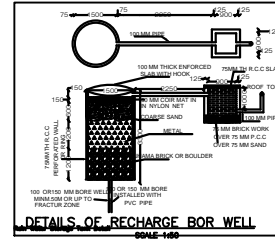
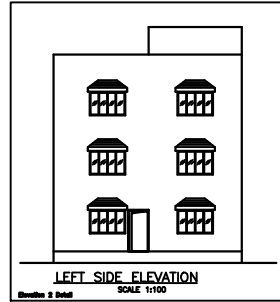
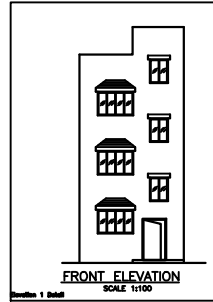
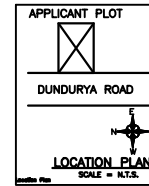
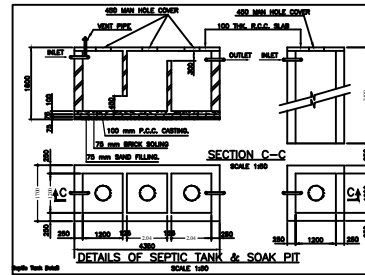
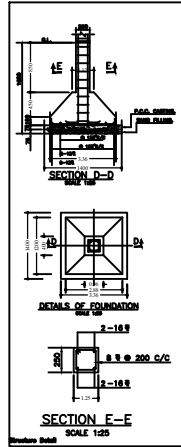
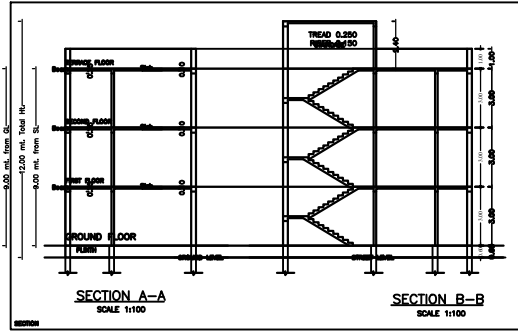


PRODUCED BY AN AUTODESK EDUCATIONAL PRODUCT

Project Title :USHA SONI

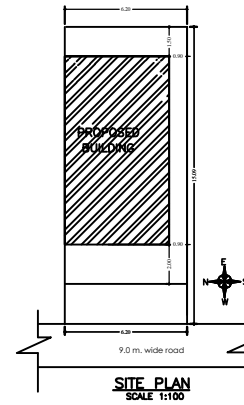
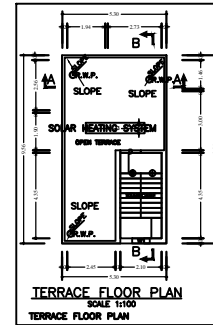
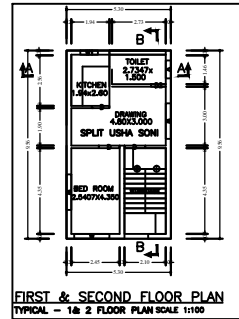
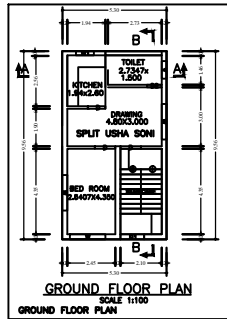


**SPECIFICATION**

**FOUNDATION** — 100 MM THK. PCC OVER 75 MM THK. BRICK FLAT SOLING OVER 75 THK. SAND FILLING R.C.C. COLUMN FDN.  
**BRICK WORK** — 250 MM THK. BRICK WORK IN CEMENT MORTAR AS PER DESIGN (1:4)  
**LINTEL** — 150 MM THK. R.C.C. LINTEL (1:2:4)  
**ROOF** — 100 MM THK. LIME TERRAZCOS OVER R.C.C. ROOF SLAB (1:5:4)  
**FLOOR** — 40 MM THK. L.S. FLOORING OVER R.C.C. ROOF  
**PLASTER** — 12 MM THK. CEMENT PLASTER IN BOTH SIDE OF WALL.  
**WHITE WASH** — TWO COATS OF WHITE WASH IN BOTH SIDE.

**SCHEDULE OF DOORS & WINDOWS**

TYPE	SIZE	DESCRIPTION
D	1000 x 2100	PANELLED
D1	900 x 2100	—DO—
D2	750 x 2100	—DO—
W	1800 x 1200	GLAZED
W1	1200 x 1200	GLAZED
W2	900 x 1200	GLAZED
V	750 x 800	—DO—



SIGN. OF APPLICANT

SIGN. OF ENGINEER/ARCH

PRODUCED BY AN AUTODESK EDUCATIONAL PRODUCT

PRODUCED BY AN AUTODESK EDUCATIONAL PRODUCT

PRODUCED BY AN AUTODESK EDUCATIONAL PRODUCT