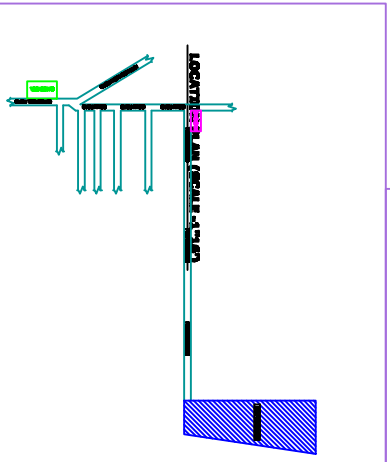
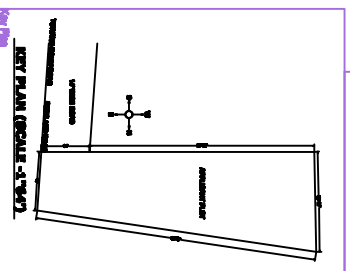
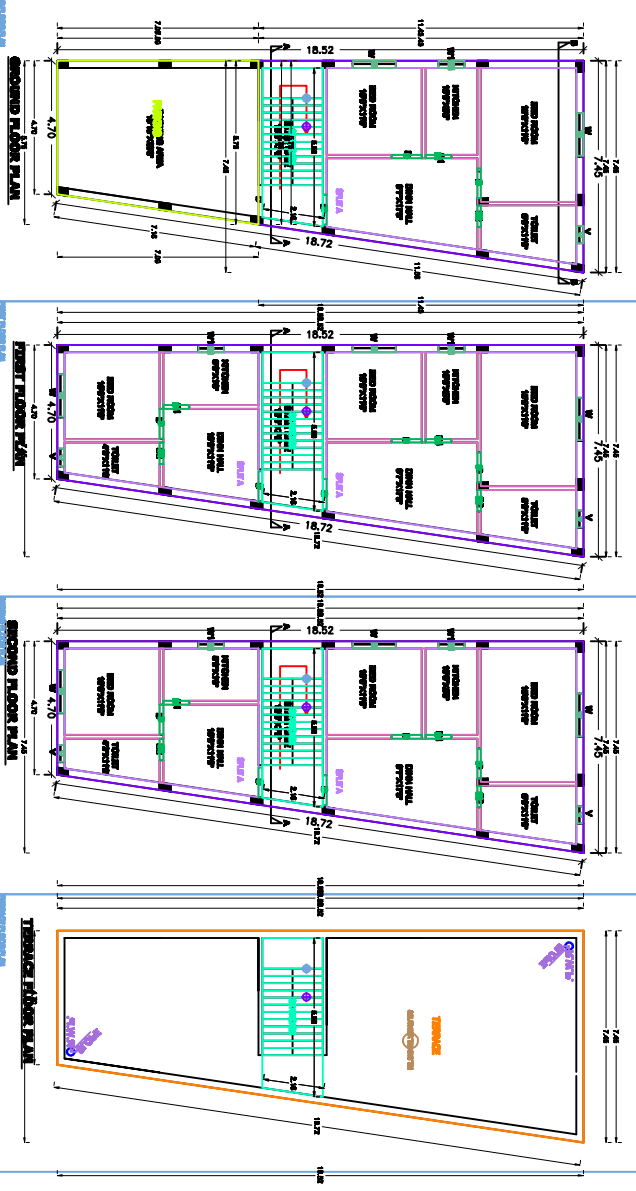
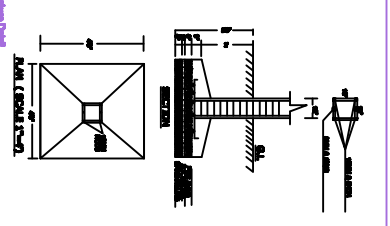
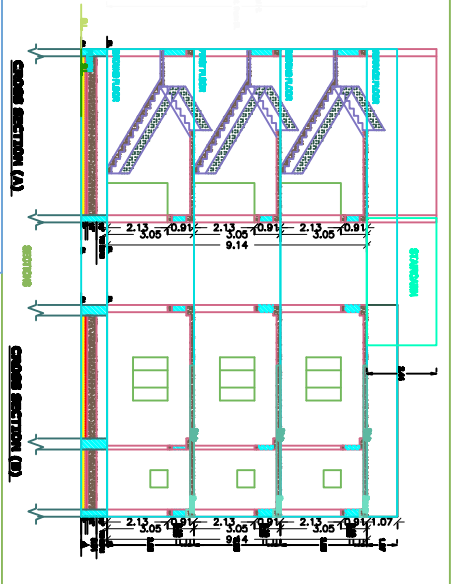
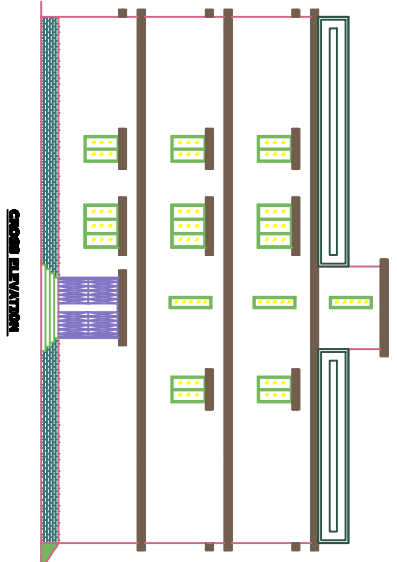
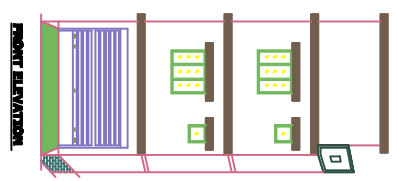


**PROPOSED RESIDENTIAL BUILDING PLAN OF SHT REETA KUMARI W/O SRI UNASANKAR PRASAD AT- MOUZA - GONU - WARD NO- 23, P.S.-TELAYYA, P.S.- NO.-12, UNDER JHUNURI TELAYYA NAAGR PRAESHAD KAVATA NO - 106 PLOT NO. - 8863 DIST. OF KODURU (CHANNarayana)**



SCHEDULE OF DOORS/WINDOWS		DETAILS OF THE FLOOR		DETAILS OF ROOF	
NO.	TYPE	NO.	DETAILS	NO.	DETAILS
1	WOODEN	1	CONCRETE	1	CONCRETE
2	ALUMINIUM	2	CONCRETE	2	CONCRETE
3	ALUMINIUM	3	CONCRETE	3	CONCRETE
4	ALUMINIUM	4	CONCRETE	4	CONCRETE
5	ALUMINIUM	5	CONCRETE	5	CONCRETE
6	ALUMINIUM	6	CONCRETE	6	CONCRETE
7	ALUMINIUM	7	CONCRETE	7	CONCRETE
8	ALUMINIUM	8	CONCRETE	8	CONCRETE
9	ALUMINIUM	9	CONCRETE	9	CONCRETE
10	ALUMINIUM	10	CONCRETE	10	CONCRETE

