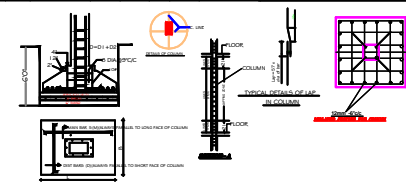
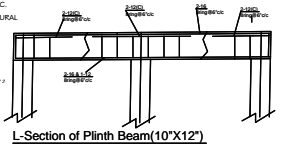


REINFORCEMENT DETAILS:-									
FOOTING NO.	FOOTING SIZE	COL TYPE	L	B	D1	BASE JAIL	DOUBLE JAIL	COLUMN DETAILS	GR TO 2ND SIZE AND REIN.
1	6'X6'	T1	6'	6'	12"		10812 @ 8" C/C BOTH WAY. 5'X5'X6'	COL-10'X10' BARS-4-16# RINGS-8 DIA @ 5' TO 8' C/C	
1	5'X5'	T2	4'	4'	12"		10812 @ 8" C/C BOTH WAY. 4'X4'X6'	COL-10'X10' BARS-4-16# RINGS-8 DIA @ 5' TO 8' C/C	



NOTE
 1) SIZE SHOWN IN DWG. IS EXACT SIZE OF FOOTING SIZE OF CUTTING AND FCC TO BE INCREASED BY 5" FROM ALL SIDES FOR PROPER PLACEMENT OF REIN ETC.
 2) DEPTH OF CUTTING SHALL BE 5" FROM NATURAL GROUND LEVEL.

GENERAL NOTES
 1. ALL DIMENSIONS ARE IN FEET AND INCHES UNLESS OTHERWISE SPECIFIED.
 2. ALL DIMENSIONS ARE TO FACE UNLESS OTHERWISE SPECIFIED.
 3. ALL DIMENSIONS ARE TO CENTERLINE UNLESS OTHERWISE SPECIFIED.
 4. ALL DIMENSIONS ARE TO SURFACE UNLESS OTHERWISE SPECIFIED.
 5. ALL DIMENSIONS ARE TO CENTERLINE UNLESS OTHERWISE SPECIFIED.
 6. ALL DIMENSIONS ARE TO SURFACE UNLESS OTHERWISE SPECIFIED.
 7. ALL DIMENSIONS ARE TO CENTERLINE UNLESS OTHERWISE SPECIFIED.
 8. ALL DIMENSIONS ARE TO SURFACE UNLESS OTHERWISE SPECIFIED.
 9. ALL DIMENSIONS ARE TO CENTERLINE UNLESS OTHERWISE SPECIFIED.
 10. ALL DIMENSIONS ARE TO SURFACE UNLESS OTHERWISE SPECIFIED.



footing detail proposed "residential building" for at POLICE LINE Architects-The design Group, 1st Floor, Park Road Building, K. J. Somaiya Institute of Engineering & Information Technology, Vashi, Mumbai - 400 703.