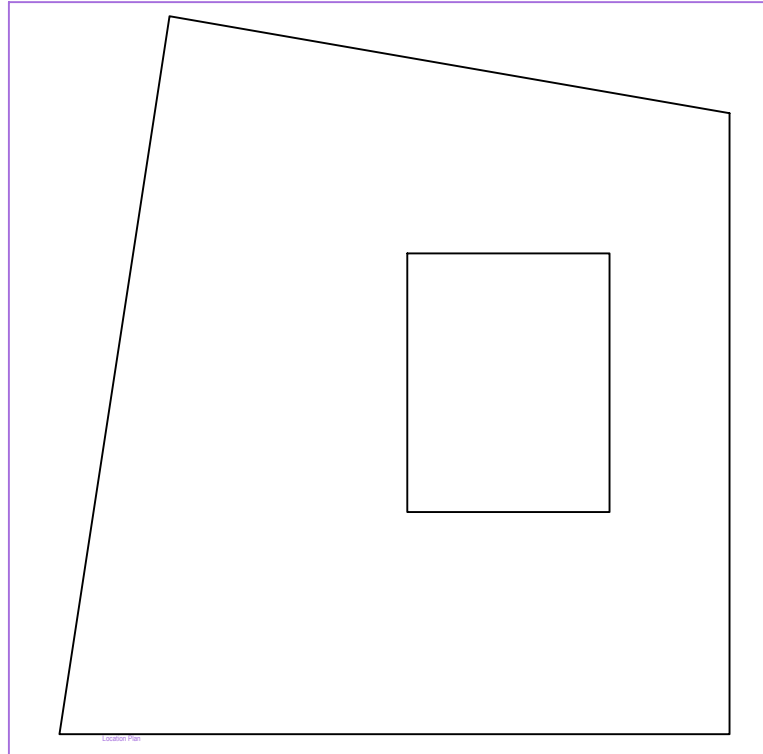
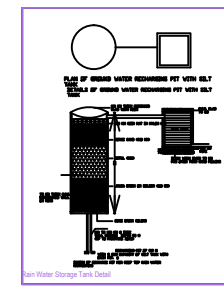
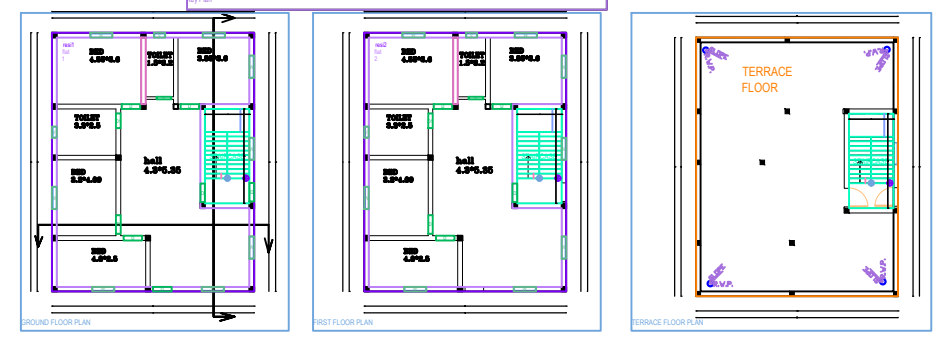
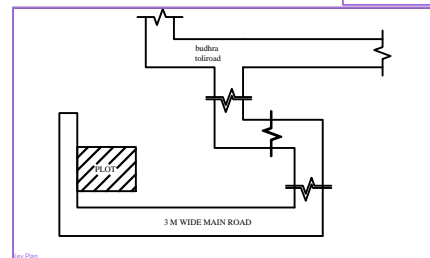
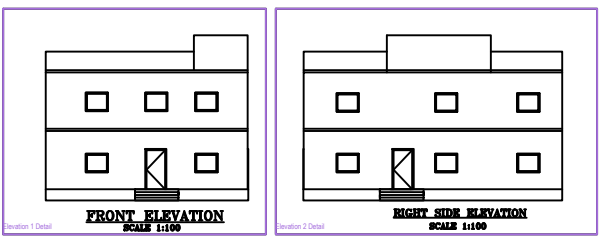
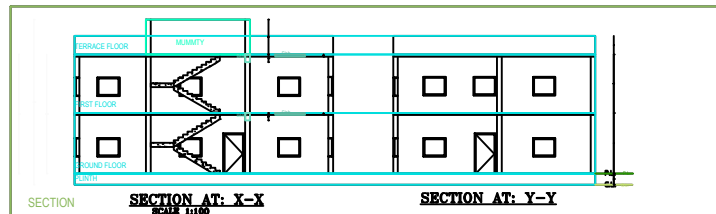
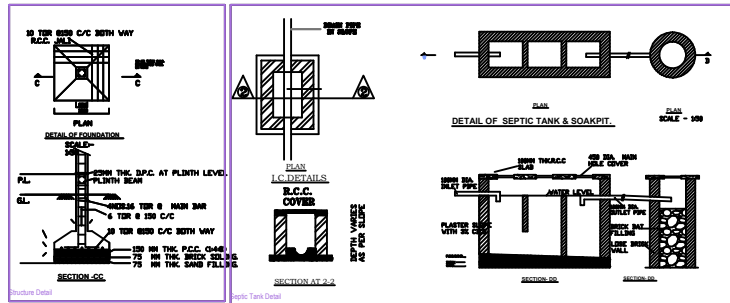


Project Title JOHN LAKRA



SPECIFICATIONS

1. BRICKWORK IN FOUNDATION & PLINTH SHALL BE OF FIRST CLASS BRICK IN CEMENT MORTAR 1:6 AND HALF BRICK WILL BE 1:4 CEMENT MORTAR
2. MASONRY FOUNDATION WITH ISOLATED R.C.C COLUMN SHALL BE PROVIDED
3. CURTAIN GLAZING/ STRUCTURAL GLAZING OF GOOD QUALITY AND MARK VENTILATOR SYSTEM SHALL BE USED
4. ROLLING SHUTTER SHALL BE USED FOR SHOPS OPENINGS
5. MS GLAZED/ANODIZED ALUMINIUM/CL. SECCOLOR WINDOW AND R.C.C WITH CEMENT MORTAR 1:4
6. ALL R.C.C WORKS SHALL BE DONE IN 1:4:5(OMED) MIX CONCRETE TMT STEEL BARS OF 500 SHALL BE USED IN R.C.C STRUCTURES COMMERCIAL QUALITY
7. ALL MASONRY SURFACE SHALL BE PLASTERED WITH CEMENT MORTAR 1:6
8. ALL STEEL AND WOOD WORK SHALL BE PAINTED WITH SYNTHETIC PAINT
9. ALL SANITARY AND ELECTRICAL FITTINGS SHALL BE OF STANDARD MARK AND WORKMANSHIP
10. MOTTIA STONE / MOSAIC FLOORING INCLUDING STAIRCASE SHALL BE USED

SL.NO.	SCHEDULE OF OPENINGS	DESCRIPTION
1.	D 1.1X2.10	Sil wood chauskhat & Gamhar wood shutter
2.	D1 .90X2.10	Sil wood chauskhat & Gamhar wood shutter
3.	D2 .75X2.10	Sil wood chauskhat & Gamhar wood shutter
4.	W 1.50X1.20	Fully glazed window
5.	W1 1.20X1.20	Fully glazed window
6.	V2 .90X1.20	Fully glazed window
7.	V .60X.60	CELLING VANTILATOR
8.	C.G 2.10X2.10	

SCHEDULE OF AREA	
1. TOTAL PLOT AREA AS PER SITE	: 1205.70 SQM
2. PROPOSED AREA AT GROUND FLOOR	: 151.94 SQM
3. TOTAL BUILD UP AREA	: 151.94 SQM
4. COVERED AREA	: 151.94X100 = 13.40% 1205.70

PROPOSED RESIDENTIAL BUILDING FOR MR. JOHN LAKRA S/O - LATE CAMIL LAKRA KHATA NO - 03, PLOT NO - 2484. RAKWA - 30.00 DISMIL. THANA NO - 80. MAHALLA - BUDHRA TOLI MAUZA - SIMDEGA. DISTT. - SIMDEGA (JHARKHAND)

SCALE	SHEET NO.
AS MENTIONED	1/1

Building A (BUILDING)					
Item No.	Total Built Up Area (Sq. Ft.)	Construction Area (Sq. Ft.)	Net Floor Area (Sq. Ft.)	Planned Floor Area (Sq. Ft.)	Planned Floor Area (Sq. Ft.)
1	151.94	151.94	151.94	151.94	151.94
2	151.94	151.94	151.94	151.94	151.94
3	151.94	151.94	151.94	151.94	151.94
4	151.94	151.94	151.94	151.94	151.94
5	151.94	151.94	151.94	151.94	151.94
6	151.94	151.94	151.94	151.94	151.94
7	151.94	151.94	151.94	151.94	151.94
8	151.94	151.94	151.94	151.94	151.94
9	151.94	151.94	151.94	151.94	151.94
10	151.94	151.94	151.94	151.94	151.94
11	151.94	151.94	151.94	151.94	151.94
12	151.94	151.94	151.94	151.94	151.94
13	151.94	151.94	151.94	151.94	151.94
14	151.94	151.94	151.94	151.94	151.94
15	151.94	151.94	151.94	151.94	151.94
16	151.94	151.94	151.94	151.94	151.94
17	151.94	151.94	151.94	151.94	151.94
18	151.94	151.94	151.94	151.94	151.94
19	151.94	151.94	151.94	151.94	151.94
20	151.94	151.94	151.94	151.94	151.94
21	151.94	151.94	151.94	151.94	151.94
22	151.94	151.94	151.94	151.94	151.94
23	151.94	151.94	151.94	151.94	151.94
24	151.94	151.94	151.94	151.94	151.94
25	151.94	151.94	151.94	151.94	151.94
26	151.94	151.94	151.94	151.94	151.94
27	151.94	151.94	151.94	151.94	151.94
28	151.94	151.94	151.94	151.94	151.94
29	151.94	151.94	151.94	151.94	151.94
30	151.94	151.94	151.94	151.94	151.94
31	151.94	151.94	151.94	151.94	151.94
32	151.94	151.94	151.94	151.94	151.94
33	151.94	151.94	151.94	151.94	151.94
34	151.94	151.94	151.94	151.94	151.94
35	151.94	151.94	151.94	151.94	151.94
36	151.94	151.94	151.94	151.94	151.94
37	151.94	151.94	151.94	151.94	151.94
38	151.94	151.94	151.94	151.94	151.94
39	151.94	151.94	151.94	151.94	151.94
40	151.94	151.94	151.94	151.94	151.94
41	151.94	151.94	151.94	151.94	151.94
42	151.94	151.94	151.94	151.94	151.94
43	151.94	151.94	151.94	151.94	151.94
44	151.94	151.94	151.94	151.94	151.94
45	151.94	151.94	151.94	151.94	151.94
46	151.94	151.94	151.94	151.94	151.94
47	151.94	151.94	151.94	151.94	151.94
48	151.94	151.94	151.94	151.94	151.94
49	151.94	151.94	151.94	151.94	151.94
50	151.94	151.94	151.94	151.94	151.94
51	151.94	151.94	151.94	151.94	151.94
52	151.94	151.94	151.94	151.94	151.94
53	151.94	151.94	151.94	151.94	151.94
54	151.94	151.94	151.94	151.94	151.94
55	151.94	151.94	151.94	151.94	151.94
56	151.94	151.94	151.94	151.94	151.94
57	151.94	151.94	151.94	151.94	151.94
58	151.94	151.94	151.94	151.94	151.94
59	151.94	151.94	151.94	151.94	151.94
60	151.94	151.94	151.94	151.94	151.94
61	151.94	151.94	151.94	151.94	151.94
62	151.94	151.94	151.94	151.94	151.94
63	151.94	151.94	151.94	151.94	151.94
64	151.94	151.94	151.94	151.94	151.94
65	151.94	151.94	151.94	151.94	151.94
66	151.94	151.94	151.94	151.94	151.94
67	151.94	151.94	151.94	151.94	151.94
68	151.94	151.94	151.94	151.94	151.94
69	151.94	151.94	151.94	151.94	151.94
70	151.94	151.94	151.94	151.94	151.94
71	151.94	151.94	151.94	151.94	151.94
72	151.94	151.94	151.94	151.94	151.94
73	151.94	151.94	151.94	151.94	151.94
74	151.94	151.94	151.94	151.94	151.94
75	151.94	151.94	151.94	151.94	151.94
76	151.94	151.94	151.94	151.94	151.94
77	151.94	151.94	151.94	151.94	151.94
78	151.94	151.94	151.94	151.94	151.94
79	151.94	151.94	151.94	151.94	151.94
80	151.94	151.94	151.94	151.94	151.94
81	151.94	151.94	151.94	151.94	151.94
82	151.94	151.94	151.94	151.94	151.94
83	151.94	151.94	151.94	151.94	151.94
84	151.94	151.94	151.94	151.94	151.94
85	151.94	151.94	151.94	151.94	151.94
86	151.94	151.94	151.94	151.94	151.94
87	151.94	151.94	151.94	151.94	151.94
88	151.94	151.94	151.94	151.94	151.94
89	151.94	151.94	151.94	151.94	151.94
90	151.94	151.94	151.94	151.94	151.94
91	151.94	151.94	151.94	151.94	151.94
92	151.94	151.94	151.94	151.94	151.94
93	151.94	151.94	151.94	151.94	151.94
94	151.94	151.94	151.94	151.94	151.94
95	151.94	151.94	151.94	151.94	151.94
96	151.94	151.94	151.94	151.94	151.94
97	151.94	151.94	151.94	151.94	151.94
98	151.94	151.94	151.94	151.94	151.94
99	151.94	151.94	151.94	151.94	151.94
100	151.94	151.94	151.94	151.94	151.94

- NOTE:-
1. Read this drawing along with architectural & structural drawings.
 2. Do not scale, follow written dimensions only. All dimension are in foot unless otherwise noted.
 3. All dimensions & levels shall be checked & co-related with relevant architectural & structural drawing & in case of any ambiguity the matter shall be brought to the notice of the consultant before starting the work.
 4. Grade of concrete shall be **M-20** & shall be conforming to IS: 456 - 2000.
 5. Reinforcement steel shall be High Strength Deformed TMT bars as per IS: 1786 - 1985 and having a minimum yield strength of **500 N/mm2** and having elongation more than 14.5%.
 6. Clear cover to main reinforcement shall be 50 mm for footing, 40 mm for column, 25 mm for Beam and 20 mm for slab. Side cover of footing shall be 75mm.
 7. Not more than 50% of bars shall be lapped at any section.
 8. Lap length shall be equal to $L_d = 57$ times smaller dia of bars and shall be avoided in following cases - Top bars - near support, Bottom bars - near midspan.
 9. Wherever necessary chairs shall be provided to support the top reinforcement in position.
 10. All concrete shall be machine mixed and machine vibrated.
 11. Sufficient concrete cube test and steel yield strength test is to be performed for different batches & report shall be submitted to proper authority.
 12. Use 10% extra cement in concrete for casting under the water table.
 13. Bearing Capacity of the soil is below Ground level as per given by client.
 14. Foundation has been designed for **(G + 2)** structure only
 15. L_d means 57 times of dia of bars.
 16. Structure is designed for earthquake zone IV
 17. For any ambiguity, discrepancy, deficient provision (if any felt necessary) etc must be brought to the notice of consultant/design office for clarification and work must be carried out after obtaining approval from competent authority.

R.S Consultant
main road simdega

KHAATA NO:- 03
PLOT NO :- 2484
AREA :- 30 DECIMAL
THANNA NO:- 80
MOUZA :- SIMDEGA
BOUNDARY:-
NORTH:- SAME PLOT
SOUTH:- 12' WIDE ROAD
EAST:- SAME PLOT
WEST:- SAME PLOT

CLIENT:- JOHN LAKRA

NAME OF PROJECT :- RESIDENTIAL HOUSE

TITLE :- Submission plan

SHEET NO :-01 | SIMDEGA