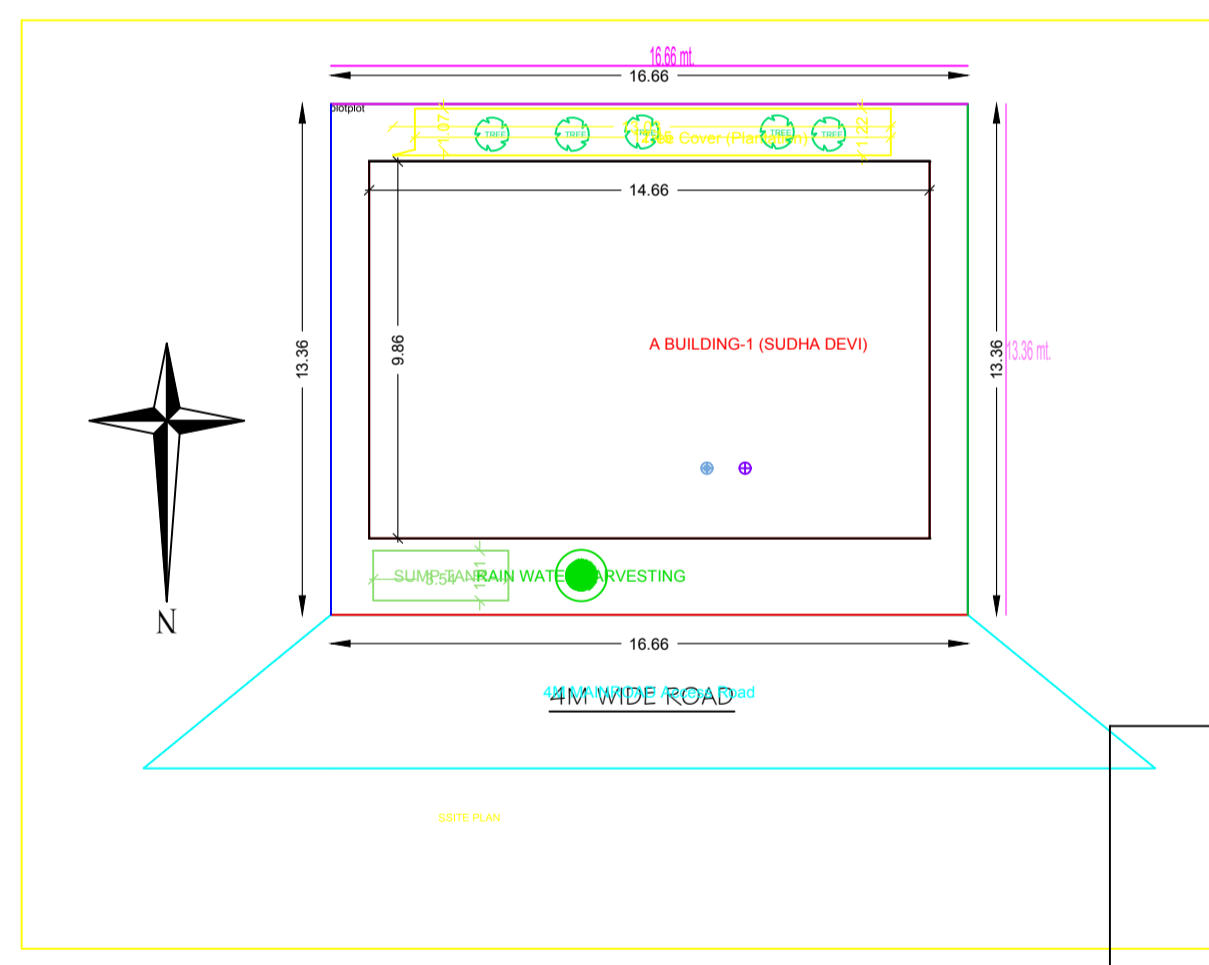
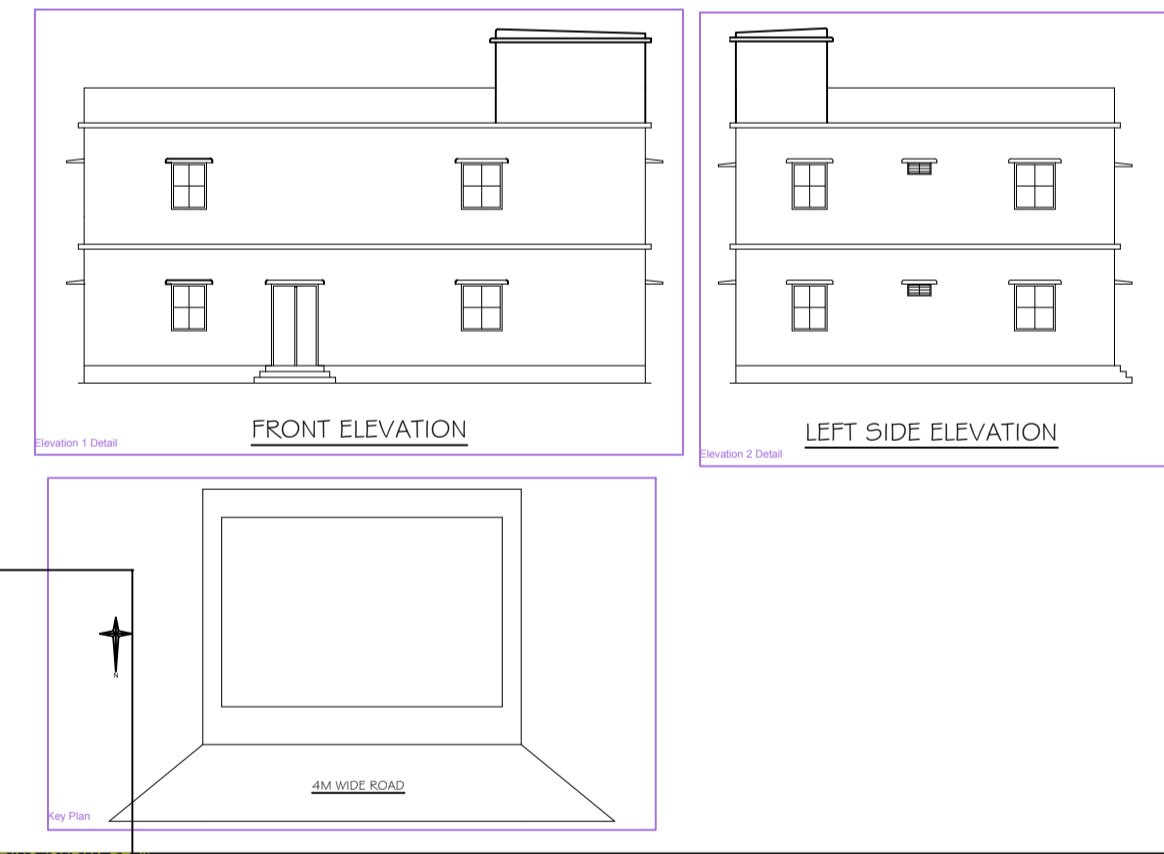
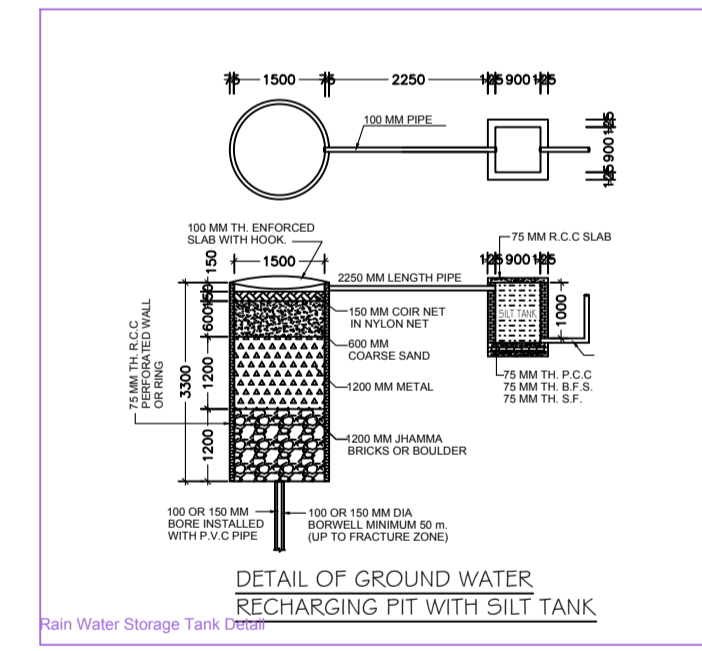
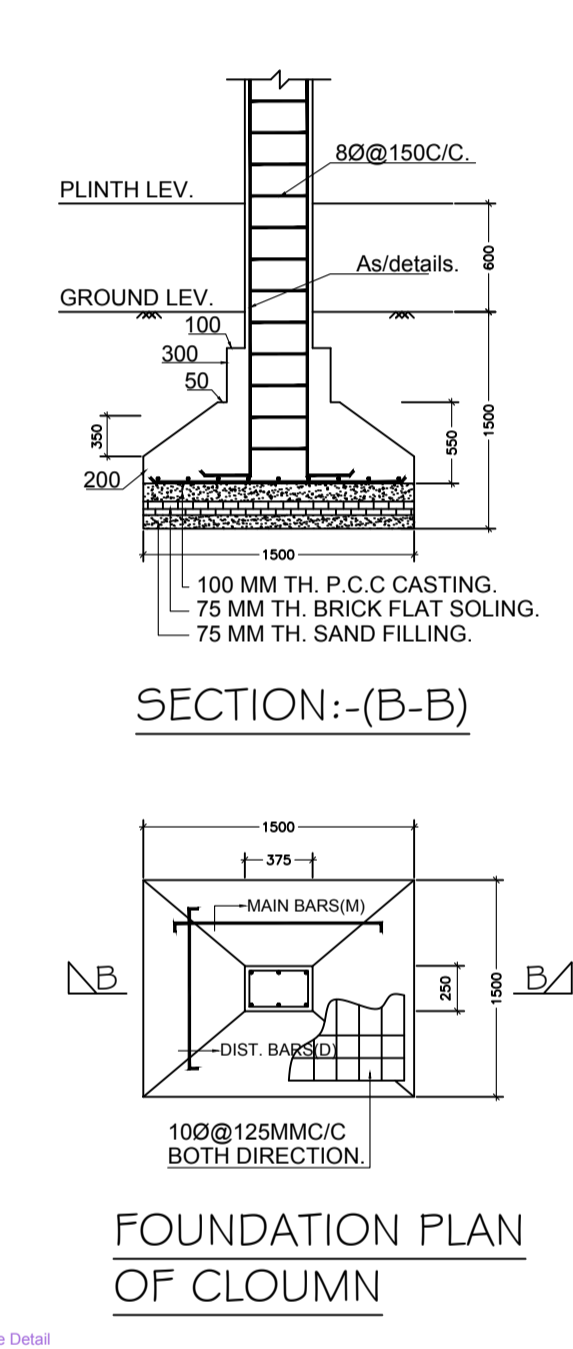
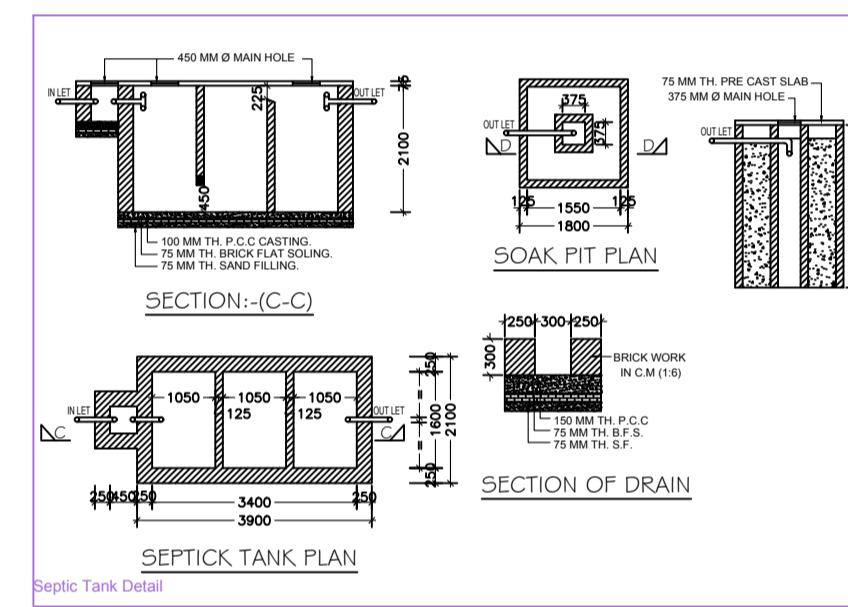
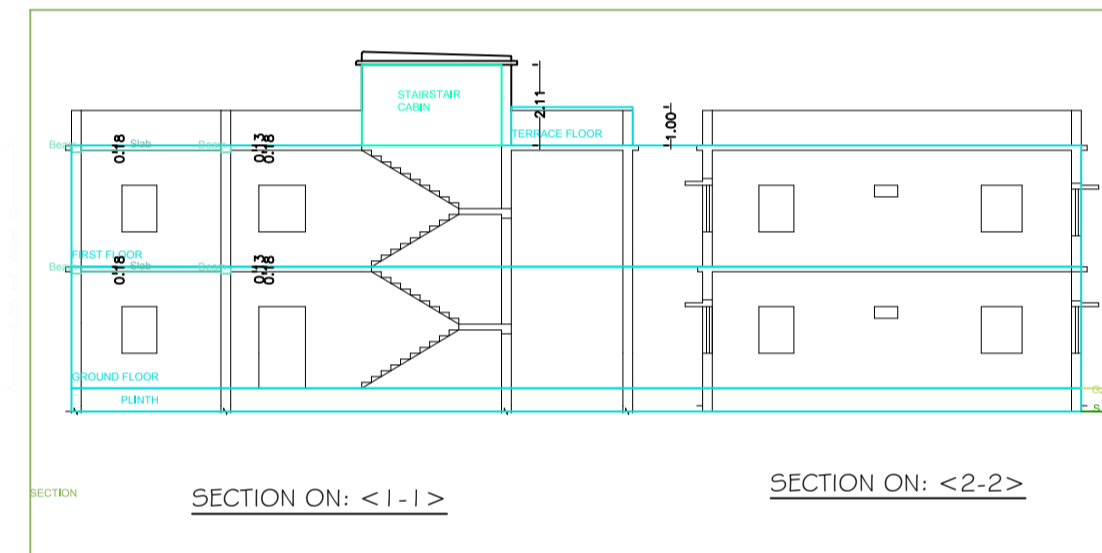
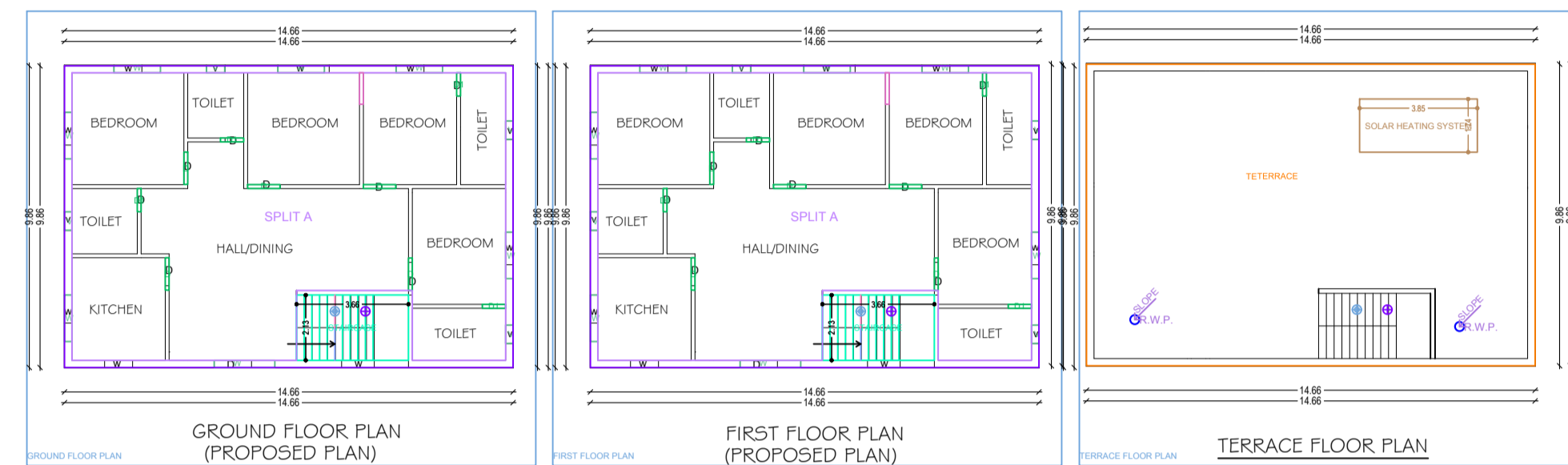


Project Title :KASHINATH NAYAK



SIGN WITH SEAL BY AUTHORITY

SPECIFICATION

- Dimension : All dimensions are mentioned in feet & inches.
- Foundation : As per registered depth and width below the NGL.
- Foundation : As per design of Reinforced Cement Concrete/ RCC.
- PCC : As per M-15 Mix Grade with 3" thickness or noted.
- DPC : As per M-15 Mix Grade with 2" thickness or noted.
- Lime : As per M-20 or M-25 Mix Grade or either noted.
- Roof : As per design and F.E. of the structure.
- Block Work : First Class Block Work with Cement Mortar 1:4 Mix in Foundation & Superstructure.
- Plaster Work : Cement Mortar 1:4 & 1:4 Mix in Ceiling, Outer Walls & Inner Walls respectively with 1/2" thick or noted.
- Painting Work : White Wash / Emulsion on Outer side Wall and Colour Wash / Oil Bound Disperser in Inner side wall & Ceiling.
- Wood Work : With Sal Wood / Teak Wood or Standard Wood.

SCHEDULE OF OPENING

1. ROLL SHUTTER	15. WINDOW
2. ROLL SHUTTER	16. WINDOW
3. COOL GATE	17. WINDOW
4. DOOR	18. WINDOW
5. DOOR	19. WINDOW
6. DOOR	20. WINDOW
7. DOOR	21. WINDOW
8. DOOR	22. WINDOW
9. DOOR	23. WINDOW
10. DOOR	24. WINDOW
11. DOOR	25. WINDOW
12. DOOR	26. WINDOW
13. DOOR	27. WINDOW
14. DOOR	28. WINDOW

SCHEDULE OF AREA

Built up in G.FLOOR	392.00	392.00
Built up in 1st FLOOR	670.00	670.00
Built up in 2nd FLOOR	670.00	670.00
Built up in 3rd FLOOR	670.00	670.00
Built up in 4th FLOOR	670.00	670.00
Built up in 5th FLOOR	670.00	670.00
Built up in 6th FLOOR	670.00	670.00
Built up in 7th FLOOR	670.00	670.00
Built up in 8th FLOOR	670.00	670.00
Built up in 9th FLOOR	670.00	670.00
Built up in 10th FLOOR	670.00	670.00
Built up in 11th FLOOR	670.00	670.00
Built up in 12th FLOOR	670.00	670.00
Built up in 13th FLOOR	670.00	670.00
Built up in 14th FLOOR	670.00	670.00
Built up in 15th FLOOR	670.00	670.00
Built up in 16th FLOOR	670.00	670.00
Built up in 17th FLOOR	670.00	670.00
Built up in 18th FLOOR	670.00	670.00
Built up in 19th FLOOR	670.00	670.00
Built up in 20th FLOOR	670.00	670.00
Built up in 21st FLOOR	670.00	670.00
Built up in 22nd FLOOR	670.00	670.00
Built up in 23rd FLOOR	670.00	670.00
Built up in 24th FLOOR	670.00	670.00
Built up in 25th FLOOR	670.00	670.00
Built up in 26th FLOOR	670.00	670.00
Built up in 27th FLOOR	670.00	670.00
Built up in 28th FLOOR	670.00	670.00
Built up in 29th FLOOR	670.00	670.00
Built up in 30th FLOOR	670.00	670.00
Built up in 31st FLOOR	670.00	670.00
Built up in 32nd FLOOR	670.00	670.00
Built up in 33rd FLOOR	670.00	670.00
Built up in 34th FLOOR	670.00	670.00
Built up in 35th FLOOR	670.00	670.00
Built up in 36th FLOOR	670.00	670.00
Built up in 37th FLOOR	670.00	670.00
Built up in 38th FLOOR	670.00	670.00
Built up in 39th FLOOR	670.00	670.00
Built up in 40th FLOOR	670.00	670.00
Built up in 41st FLOOR	670.00	670.00
Built up in 42nd FLOOR	670.00	670.00
Built up in 43rd FLOOR	670.00	670.00
Built up in 44th FLOOR	670.00	670.00
Built up in 45th FLOOR	670.00	670.00
Built up in 46th FLOOR	670.00	670.00
Built up in 47th FLOOR	670.00	670.00
Built up in 48th FLOOR	670.00	670.00
Built up in 49th FLOOR	670.00	670.00
Built up in 50th FLOOR	670.00	670.00
Built up in 51st FLOOR	670.00	670.00
Built up in 52nd FLOOR	670.00	670.00
Built up in 53rd FLOOR	670.00	670.00
Built up in 54th FLOOR	670.00	670.00
Built up in 55th FLOOR	670.00	670.00
Built up in 56th FLOOR	670.00	670.00
Built up in 57th FLOOR	670.00	670.00
Built up in 58th FLOOR	670.00	670.00
Built up in 59th FLOOR	670.00	670.00
Built up in 60th FLOOR	670.00	670.00
Built up in 61st FLOOR	670.00	670.00
Built up in 62nd FLOOR	670.00	670.00
Built up in 63rd FLOOR	670.00	670.00
Built up in 64th FLOOR	670.00	670.00
Built up in 65th FLOOR	670.00	670.00
Built up in 66th FLOOR	670.00	670.00
Built up in 67th FLOOR	670.00	670.00
Built up in 68th FLOOR	670.00	670.00
Built up in 69th FLOOR	670.00	670.00
Built up in 70th FLOOR	670.00	670.00
Built up in 71st FLOOR	670.00	670.00
Built up in 72nd FLOOR	670.00	670.00
Built up in 73rd FLOOR	670.00	670.00
Built up in 74th FLOOR	670.00	670.00
Built up in 75th FLOOR	670.00	670.00
Built up in 76th FLOOR	670.00	670.00
Built up in 77th FLOOR	670.00	670.00
Built up in 78th FLOOR	670.00	670.00
Built up in 79th FLOOR	670.00	670.00
Built up in 80th FLOOR	670.00	670.00
Built up in 81st FLOOR	670.00	670.00
Built up in 82nd FLOOR	670.00	670.00
Built up in 83rd FLOOR	670.00	670.00
Built up in 84th FLOOR	670.00	670.00
Built up in 85th FLOOR	670.00	670.00
Built up in 86th FLOOR	670.00	670.00
Built up in 87th FLOOR	670.00	670.00
Built up in 88th FLOOR	670.00	670.00
Built up in 89th FLOOR	670.00	670.00
Built up in 90th FLOOR	670.00	670.00
Built up in 91st FLOOR	670.00	670.00
Built up in 92nd FLOOR	670.00	670.00
Built up in 93rd FLOOR	670.00	670.00
Built up in 94th FLOOR	670.00	670.00
Built up in 95th FLOOR	670.00	670.00
Built up in 96th FLOOR	670.00	670.00
Built up in 97th FLOOR	670.00	670.00
Built up in 98th FLOOR	670.00	670.00
Built up in 99th FLOOR	670.00	670.00
Built up in 100th FLOOR	670.00	670.00

SCHEDULE OF DOORS & WINDOWS

Sl. No.	Type	Width	Height
1.	D	4'-0"	7'-0"
2.	W	3'-0"	7'-0"
3.	W	3'-0"	7'-0"
4.	W	3'-0"	7'-0"
5.	W	3'-0"	7'-0"
6.	W	3'-0"	7'-0"
7.	W	3'-0"	7'-0"

Building A BUILDING (KASHINATH NAYAK)

Item Name	Rate (Rs/m ²)	Quantity	Total Rate (Rs)
Ground Floor	14.50	14.50	210.25
First Floor	14.50	14.50	210.25
Second Floor	14.50	14.50	210.25
Third Floor	14.50	14.50	210.25
Fourth Floor	14.50	14.50	210.25
Fifth Floor	14.50	14.50	210.25
Sixth Floor	14.50	14.50	210.25
Seventh Floor	14.50	14.50	210.25
Eighth Floor	14.50	14.50	210.25
Ninth Floor	14.50	14.50	210.25
Tenth Floor	14.50	14.50	210.25
Eleventh Floor	14.50	14.50	210.25
Twelfth Floor	14.50	14.50	210.25
Thirteenth Floor	14.50	14.50	210.25
Fourteenth Floor	14.50	14.50	210.25
Fifteenth Floor	14.50	14.50	210.25
Sixteenth Floor	14.50	14.50	210.25
Seventeenth Floor	14.50	14.50	210.25
Eighteenth Floor	14.50	14.50	210.25
Nineteenth Floor	14.50	14.50	210.25
Twentieth Floor	14.50	14.50	210.25
Twenty-first Floor	14.50	14.50	210.25
Twenty-second Floor	14.50	14.50	210.25
Twenty-third Floor	14.50	14.50	210.25
Twenty-fourth Floor	14.50	14.50	210.25
Twenty-fifth Floor	14.50	14.50	210.25
Twenty-sixth Floor	14.50	14.50	210.25
Twenty-seventh Floor	14.50	14.50	210.25
Twenty-eighth Floor	14.50	14.50	210.25
Twenty-ninth Floor	14.50	14.50	210.25
Thirtieth Floor	14.50	14.50	210.25

PROPOSED RESIDENTIAL BUILDING FOR SOMA GUDSORA S/O, LAND UNDER MOUZA :- WARD NO :- 02, UNDER PLOT NO-343/A KHATA NO-10,THANA NO-301, HOLDING NO:- SERAIKELLA, DISTRICT :- SERAIKELLA, JHARKHAND.

Sl. No.	Type	Width	Height
1.	D	4'-0"	7'-0"
2.	W	3'-0"	7'-0"
3.	W	3'-0"	7'-0"
4.	W	3'-0"	7'-0"
5.	W	3'-0"	7'-0"
6.	W	3'-0"	7'-0"
7.	W	3'-0"	7'-0"

PROPOSED RESIDENTIAL BUILDING FOR SOMA GUDSORA S/O, LAND UNDER MOUZA :- WARD NO :- 02, UNDER PLOT NO-343/A KHATA NO-10,THANA NO-301, HOLDING NO:- SERAIKELLA, DISTRICT :- SERAIKELLA, JHARKHAND.

Sl. No.	Type	Width	Height
1.	D	4'-0"	7'-0"
2.	W	3'-0"	7'-0"
3.	W	3'-0"	7'-0"
4.	W	3'-0"	7'-0"
5.	W	3'-0"	7'-0"
6.	W	3'-0"	7'-0"
7.	W	3'-0"	7'-0"