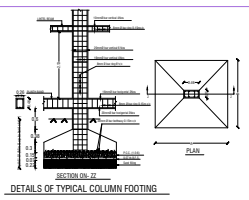
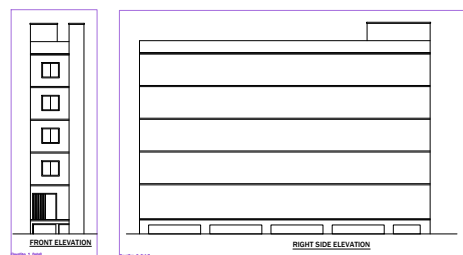


Project Title - NEWTECH VILLA DEVELOPERS PVT LTD



BRIEF SPECIFICATION

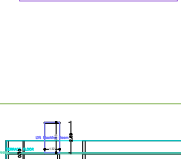
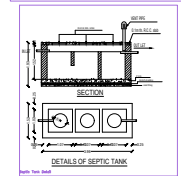
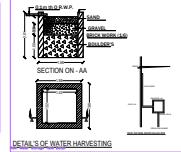
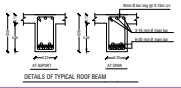
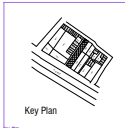
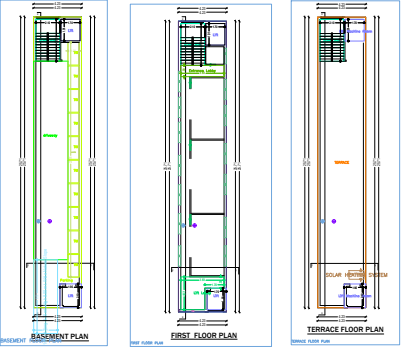
1. GENERAL: The contractor shall be responsible for obtaining all necessary approvals from the local authorities and the Government of India. The contractor shall be responsible for the design and construction of the building in accordance with the specifications and drawings provided. The contractor shall be responsible for the safety of the building and the workers during the construction. The contractor shall be responsible for the completion of the building within the specified time frame. The contractor shall be responsible for the maintenance of the building after completion.

2. MATERIALS: All materials used in the construction shall be of good quality and shall be approved by the local authorities. The contractor shall be responsible for the procurement and supply of all materials. The contractor shall be responsible for the storage and handling of the materials. The contractor shall be responsible for the disposal of the waste materials.

3. LABOR: The contractor shall be responsible for the recruitment and employment of the workers. The contractor shall be responsible for the training and safety of the workers. The contractor shall be responsible for the payment of the wages and benefits of the workers. The contractor shall be responsible for the provision of the necessary facilities for the workers.

4. SAFETY: The contractor shall be responsible for the safety of the building and the workers during the construction. The contractor shall be responsible for the implementation of the safety measures. The contractor shall be responsible for the provision of the necessary safety equipment. The contractor shall be responsible for the maintenance of the safety equipment.

5. COMPLETION: The contractor shall be responsible for the completion of the building within the specified time frame. The contractor shall be responsible for the handover of the building to the owner. The contractor shall be responsible for the maintenance of the building after completion.



SCHEDULE

Sl.	Room	Area	Volume
01	3'0" x 7'0"	21.00	21.00
02	3'0" x 7'0"	21.00	21.00
03	3'0" x 6'0"	18.00	18.00
04	4'0" x 7'0"	28.00	28.00

DETAILS OF AREA

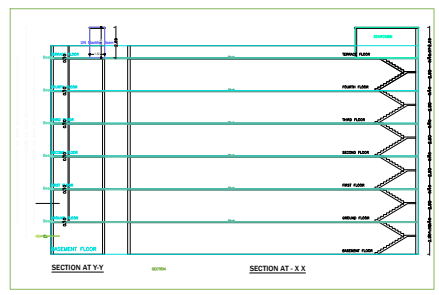
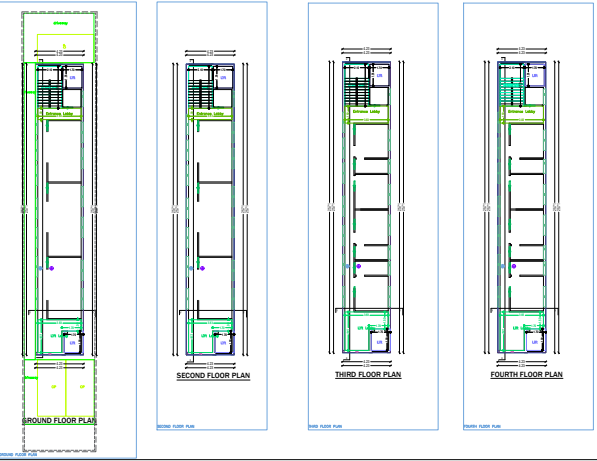
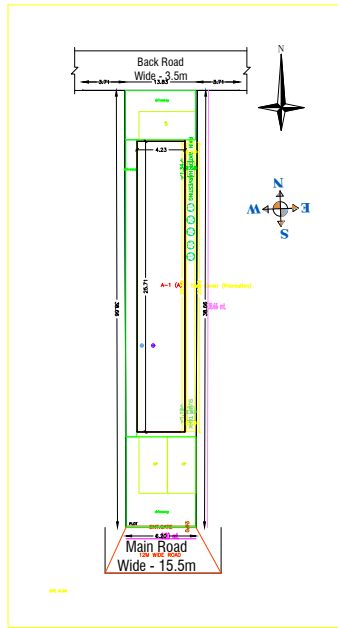
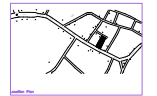
LAND AREA : 243.87 SQM
 BASEMENT FLOOR AREA : 108.87 SQM
 GROUND FLOOR AREA : 108.87 SQM
 FIRST FLOOR AREA : 108.87 SQM
 SECOND FLOOR AREA : 108.87 SQM
 THIRD FLOOR AREA : 108.87 SQM
 FOURTH FLOOR AREA : 108.87 SQM
 TOTAL COVERED AREA : 544.35 SQM
 % OF PLINTH AREA : 44.67 %
 F.A.R. : 2.23

TITLE OF DRAWING

OWNER :- M/S Newtech Villa Developer Private Limited,
 Office at S-210 Second Floor Panchsheel Park
 New Delhi, Rep. by its Director - Sri Birender
 Bhagat, S/O Sri Satya Narayan Bhagat of, S-210
 Second Floor Panchsheel Park New Delhi.

Schedule :- Mausa - Charhat, Mausa NO - 51, Khata
 Municipal Plot No. - 3460, Area - 5.90 decimal
 or 2969 Sq.ft. & Plot No. 3461, Area - 0.23
 decimal or 100 Sq.ft. Total Area - 6.13 decimal
 or 2969 Sq.ft.

Boundary :-
 North - Municipal Rasta.
 South - D. B. Road.
 East - Plot No. 3458, 3459.
 West - Municipal Rasta.



COLOR INDEX

1	Red	Concrete
2	Blue	Plaster
3	Green	Paint
4	Yellow	Paint
5	Black	Paint
6	White	Paint
7	Grey	Paint
8	Light Blue	Paint
9	Light Green	Paint
10	Light Yellow	Paint
11	Light Grey	Paint
12	Light Blue	Paint
13	Light Green	Paint
14	Light Yellow	Paint
15	Light Grey	Paint
16	Light Blue	Paint
17	Light Green	Paint
18	Light Yellow	Paint
19	Light Grey	Paint
20	Light Blue	Paint
21	Light Green	Paint
22	Light Yellow	Paint
23	Light Grey	Paint
24	Light Blue	Paint
25	Light Green	Paint
26	Light Yellow	Paint
27	Light Grey	Paint
28	Light Blue	Paint
29	Light Green	Paint
30	Light Yellow	Paint
31	Light Grey	Paint
32	Light Blue	Paint
33	Light Green	Paint
34	Light Yellow	Paint
35	Light Grey	Paint
36	Light Blue	Paint
37	Light Green	Paint
38	Light Yellow	Paint
39	Light Grey	Paint
40	Light Blue	Paint
41	Light Green	Paint
42	Light Yellow	Paint
43	Light Grey	Paint
44	Light Blue	Paint
45	Light Green	Paint
46	Light Yellow	Paint
47	Light Grey	Paint
48	Light Blue	Paint
49	Light Green	Paint
50	Light Yellow	Paint
51	Light Grey	Paint
52	Light Blue	Paint
53	Light Green	Paint
54	Light Yellow	Paint
55	Light Grey	Paint
56	Light Blue	Paint
57	Light Green	Paint
58	Light Yellow	Paint
59	Light Grey	Paint
60	Light Blue	Paint
61	Light Green	Paint
62	Light Yellow	Paint
63	Light Grey	Paint
64	Light Blue	Paint
65	Light Green	Paint
66	Light Yellow	Paint
67	Light Grey	Paint
68	Light Blue	Paint
69	Light Green	Paint
70	Light Yellow	Paint
71	Light Grey	Paint
72	Light Blue	Paint
73	Light Green	Paint
74	Light Yellow	Paint
75	Light Grey	Paint
76	Light Blue	Paint
77	Light Green	Paint
78	Light Yellow	Paint
79	Light Grey	Paint
80	Light Blue	Paint
81	Light Green	Paint
82	Light Yellow	Paint
83	Light Grey	Paint
84	Light Blue	Paint
85	Light Green	Paint
86	Light Yellow	Paint
87	Light Grey	Paint
88	Light Blue	Paint
89	Light Green	Paint
90	Light Yellow	Paint
91	Light Grey	Paint
92	Light Blue	Paint
93	Light Green	Paint
94	Light Yellow	Paint
95	Light Grey	Paint
96	Light Blue	Paint
97	Light Green	Paint
98	Light Yellow	Paint
99	Light Grey	Paint
100	Light Blue	Paint

Building A/c

Sl. No.	Particulars	Quantity	Rate	Amount
1	Excavation	100	100	10000
2	Foundation	200	200	40000
3	Structure	300	300	90000
4	Roofing	100	100	10000
5	Plumbing	50	50	2500
6	Electrical	50	50	2500
7	Painting	100	100	10000
8	Sanitary	50	50	2500
9	Other	50	50	2500
10	Total	1000	1000	100000

Bill of Materials

Sl. No.	Particulars	Quantity	Rate	Amount
1	Concrete	100	100	10000
2	Bricks	200	200	40000
3	Steel	300	300	90000
4	Roofing	100	100	10000
5	Plumbing	50	50	2500
6	Electrical	50	50	2500
7	Painting	100	100	10000
8	Sanitary	50	50	2500
9	Other	50	50	2500
10	Total	1000	1000	100000