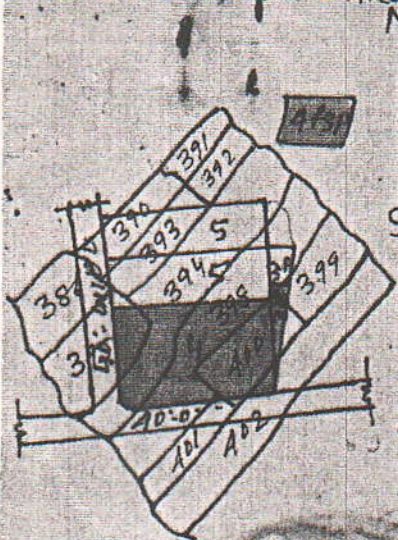


M.S. MINEC ENGINEER  
INDUSTRIAL AREA NANKUM RANCHI

TRAC 503/7



VILLAGE - SAMLONG  
THANA - RANCHI  
THANA NO - 212  
DISTRICT - RANCHI  
SCALE - 16 1/2 IN/MI

S ALLOTTED IND  
PLOT NO. 4 & 3P  
SHOWN IN RED WASH

KHATA NO	SURVEY PLOT NO	AREA IN ACRE
115	394P	0.217
202	395P	0.136
9	398P	0.332
4	399P	0.018
"	400P	0.320
"	401P	0.001
"	402P	0.041

*Copy of this map is kept at the office of the Surveyor General, Ranchi.*

TOTAL AREA - 1.065 ACRE

NORTH: BY S.P. NO. 394P, 395P, 398P, 399P & IND PLOT NO. 5 AND 3 PART  
 SOUTH: BY S.P. NO. 394P, 398P, 400P, 401P, 402P & INDUSTRIAL ROAD  
 EAST: BY S.P. NO. 399P, 400P, 402P & IND PLOT NO. 3 PART  
 WEST: BY S.P. NO. 394P, 395P & INDUSTRIAL ROAD

BY *[Signature]* SECRETARY