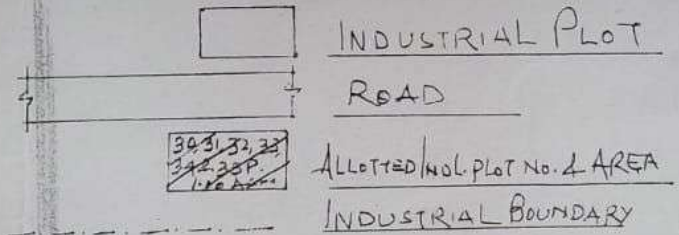


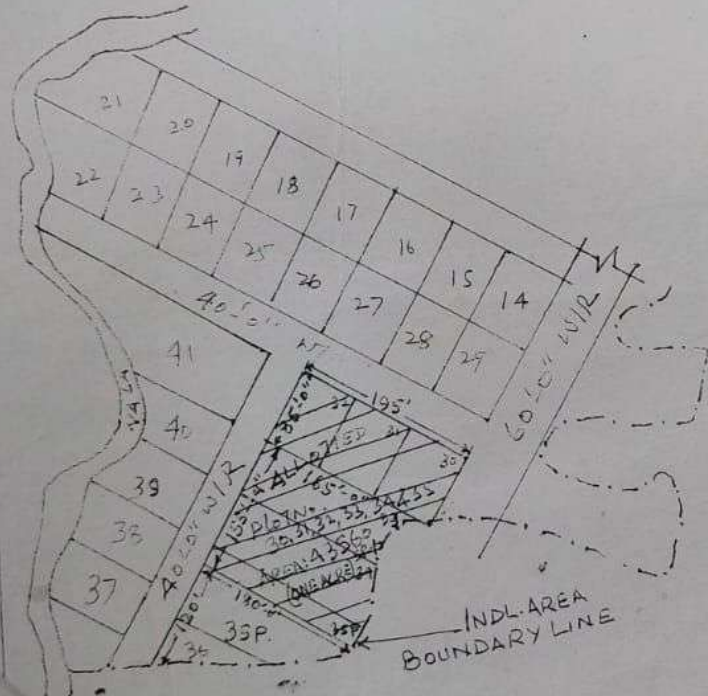
PLAN SHOWING THE LAND ALLOTTED TO M/S BASUDEB AUTO LTD. IN THE HAZARI BAGH INDUSTRIAL AREA, HAZARI BAGH. ALLOTTED INDUSTRIAL PLOT NO. 30 TO 34 & 35P. AREA: 43560 SFT. (ONE ACRE) VIDE RIADA ORDER NO. 1645 DATED: 04.12.2006.



REFERENCE



SCALE: 1" = 165' 0"



RANCHI INDUSTRIAL AREA DEVELOPMENT AUTHORITY		
LAND POSSESSION MAP		
TAKEN OVER	HANDLED OVER	
For BASUDEB AUTO LIMITED <i>[Signature]</i> 24/5/07 DIRECTOR	<i>[Signature]</i>	<i>[Signature]</i> 24/5/07
M/S BASUDEB AUTO LTD.	I.E.O. R.I.A.D.A.	DEV. OFFICER R.I.A.D.A.
SURVEYOR: <i>[Signature]</i>		