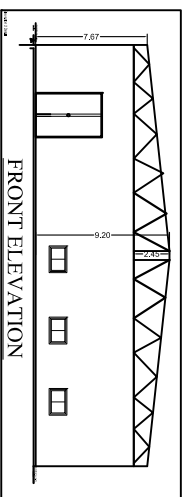
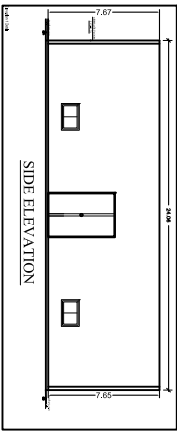
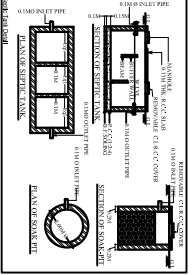
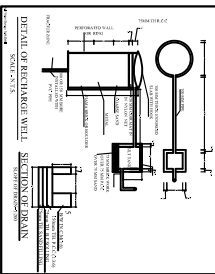
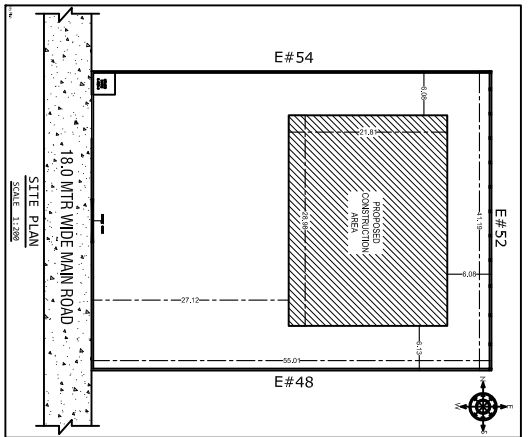
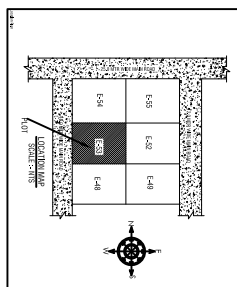
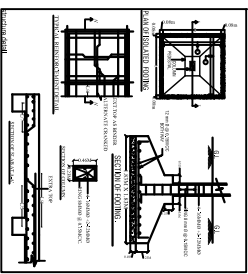
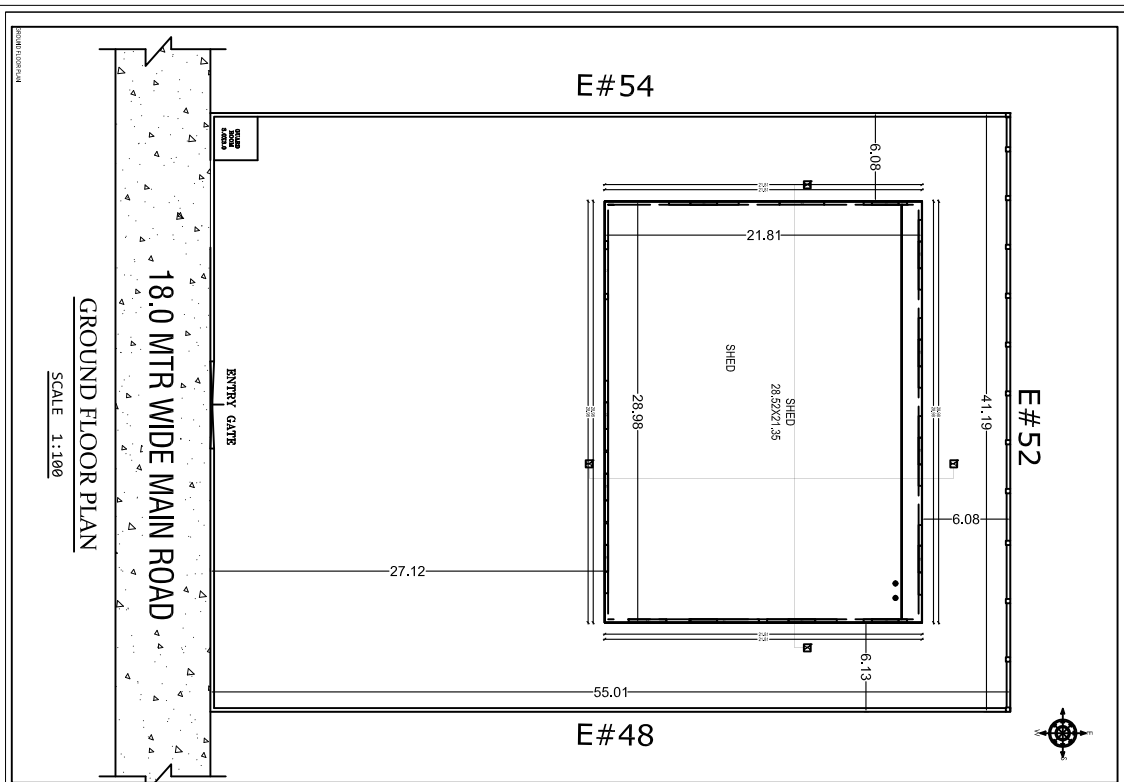
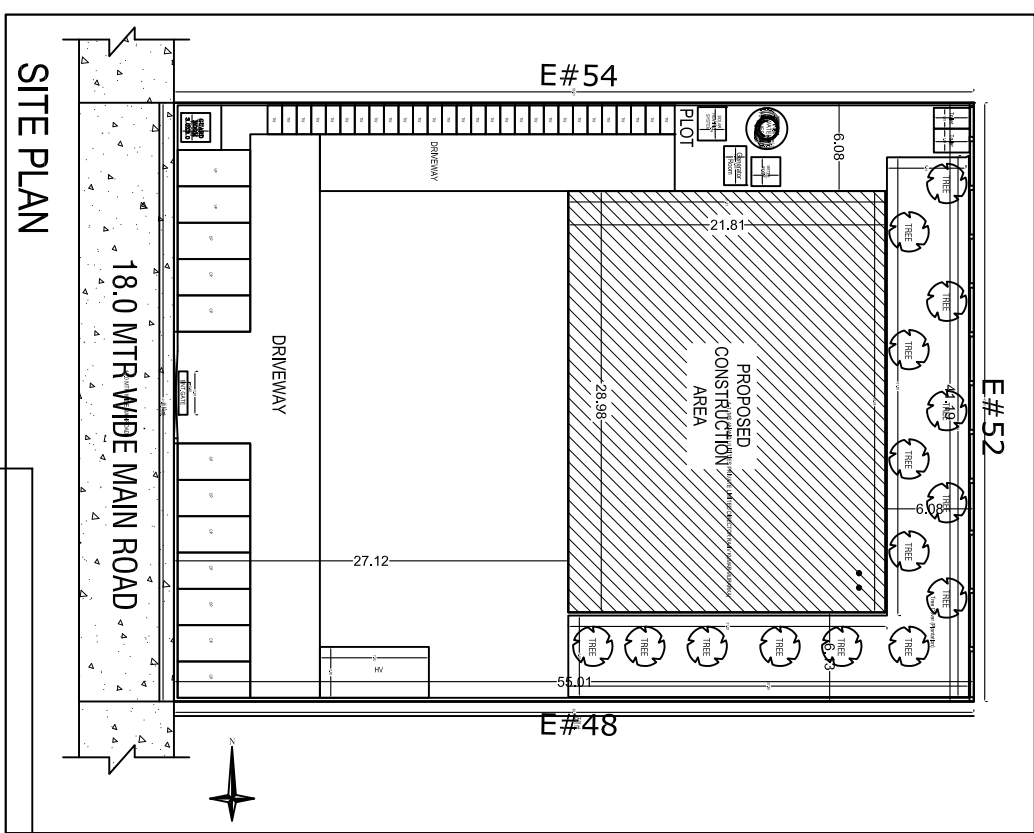
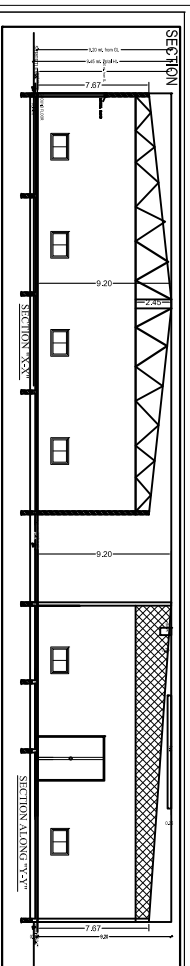


Project Title :MS ANAND UTILITIES PRIVATE LIMITED DIRECTOR RAJIV KUMAR MURARKA



PROPOSED INDUSTRIAL BUILDING PLAN FOR :-
 LAND OWNER: M/S ANAND UTILITIES PRIVATE LIMITED
 DIRECTOR: RAJIV KUMAR MURARKA
 PLOT NO :- E-53, E-54, E-55 (PART) SURVEY PLOT NO- 354 (PART)
 KATHA NO :- 81
 MOUZA- HATYADHI
 THANA NO :- 60
 P.S :- SARAKELA
 DISTRICT :- SERIKELLA- KHARSAWAN
 STATE :- JHARKHAND

DATE: 10/01/2024
 TIME: 11:00 AM
 SCALE: 1:100
 DRAWN BY: [Name]
 CHECKED BY: [Name]
 APPROVED BY: [Name]

NO.	DESCRIPTION	QTY	UNIT	REMARKS
1	CEMENT	100	MT	
2	IRON ROD	50	MT	
3	BRICK	10000	NO	
4	AGGREGATE	200	MT	
5	PAINT	50	LITRE	
6	GLASS	10	SQ.M	
7	DOOR	2	NO	
8	WINDOW	4	NO	
9	ROOF TRUSS	1	NO	
10	STEEL BEAM	10	MT	
11	STEEL COLUMN	4	NO	
12	STEEL PLATE	5	MT	
13	STEEL WELD	10	MT	
14	STEEL BRACKET	10	MT	
15	STEEL ANGLE	10	MT	
16	STEEL CHANNEL	10	MT	
17	STEEL ROLLER	10	MT	
18	STEEL WIRE	10	MT	
19	STEEL NUT	10	NO	
20	STEEL WASHER	10	NO	
21	STEEL BOLT	10	NO	
22	STEEL SCREW	10	NO	
23	STEEL RIVET	10	NO	
24	STEEL WELD ROD	10	MT	
25	STEEL WELD ELECTRODE	10	MT	
26	STEEL WELD GUN	1	NO	
27	STEEL WELD MASK	1	NO	
28	STEEL WELD GLOVES	1	NO	
29	STEEL WELD HELMET	1	NO	
30	STEEL WELD BOOTS	1	NO	

NO.	DESCRIPTION	QTY	UNIT	REMARKS
1	CEMENT	100	MT	
2	IRON ROD	50	MT	
3	BRICK	10000	NO	
4	AGGREGATE	200	MT	
5	PAINT	50	LITRE	
6	GLASS	10	SQ.M	
7	DOOR	2	NO	
8	WINDOW	4	NO	
9	ROOF TRUSS	1	NO	
10	STEEL BEAM	10	MT	
11	STEEL COLUMN	4	NO	
12	STEEL PLATE	5	MT	
13	STEEL WELD	10	MT	
14	STEEL BRACKET	10	MT	
15	STEEL ANGLE	10	MT	
16	STEEL CHANNEL	10	MT	
17	STEEL ROLLER	10	MT	
18	STEEL WIRE	10	MT	
19	STEEL NUT	10	NO	
20	STEEL WASHER	10	NO	
21	STEEL BOLT	10	NO	
22	STEEL SCREW	10	NO	
23	STEEL RIVET	10	NO	
24	STEEL WELD ROD	10	MT	
25	STEEL WELD ELECTRODE	10	MT	
26	STEEL WELD GUN	1	NO	
27	STEEL WELD MASK	1	NO	
28	STEEL WELD GLOVES	1	NO	
29	STEEL WELD HELMET	1	NO	
30	STEEL WELD BOOTS	1	NO	