

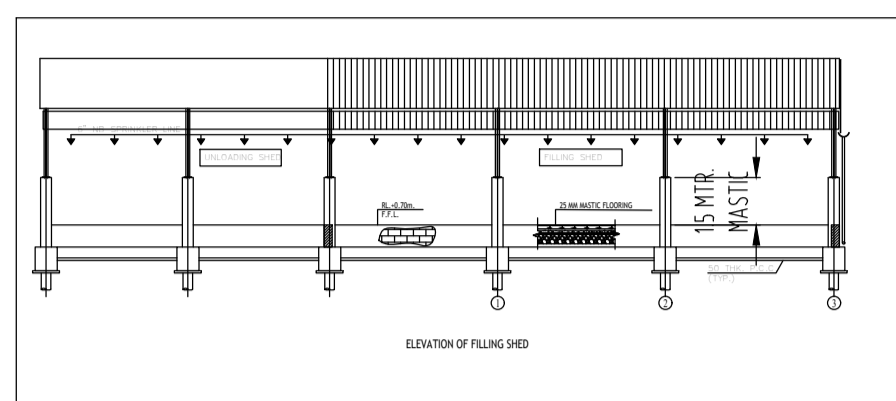
LPG STORAGE TANK
3x42.5 KL WATER CAPACITY

SL. NO.

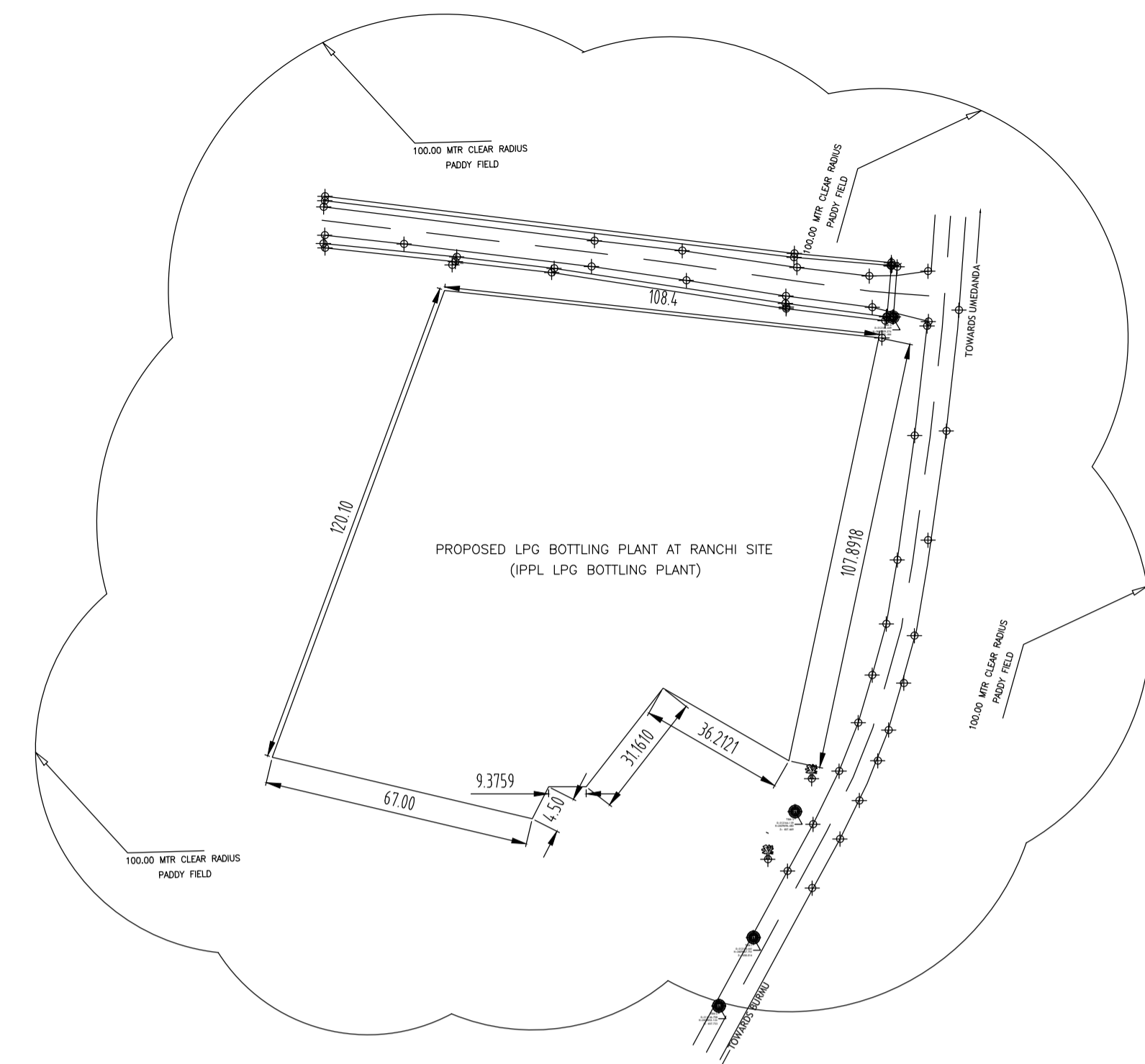
DESCRIPTION	CAPACITY (MT)
BULLET-01	33
BULLET-02	33
BULLET-03	33

LEGEND OF PROPOSED FIRE WATER LINE

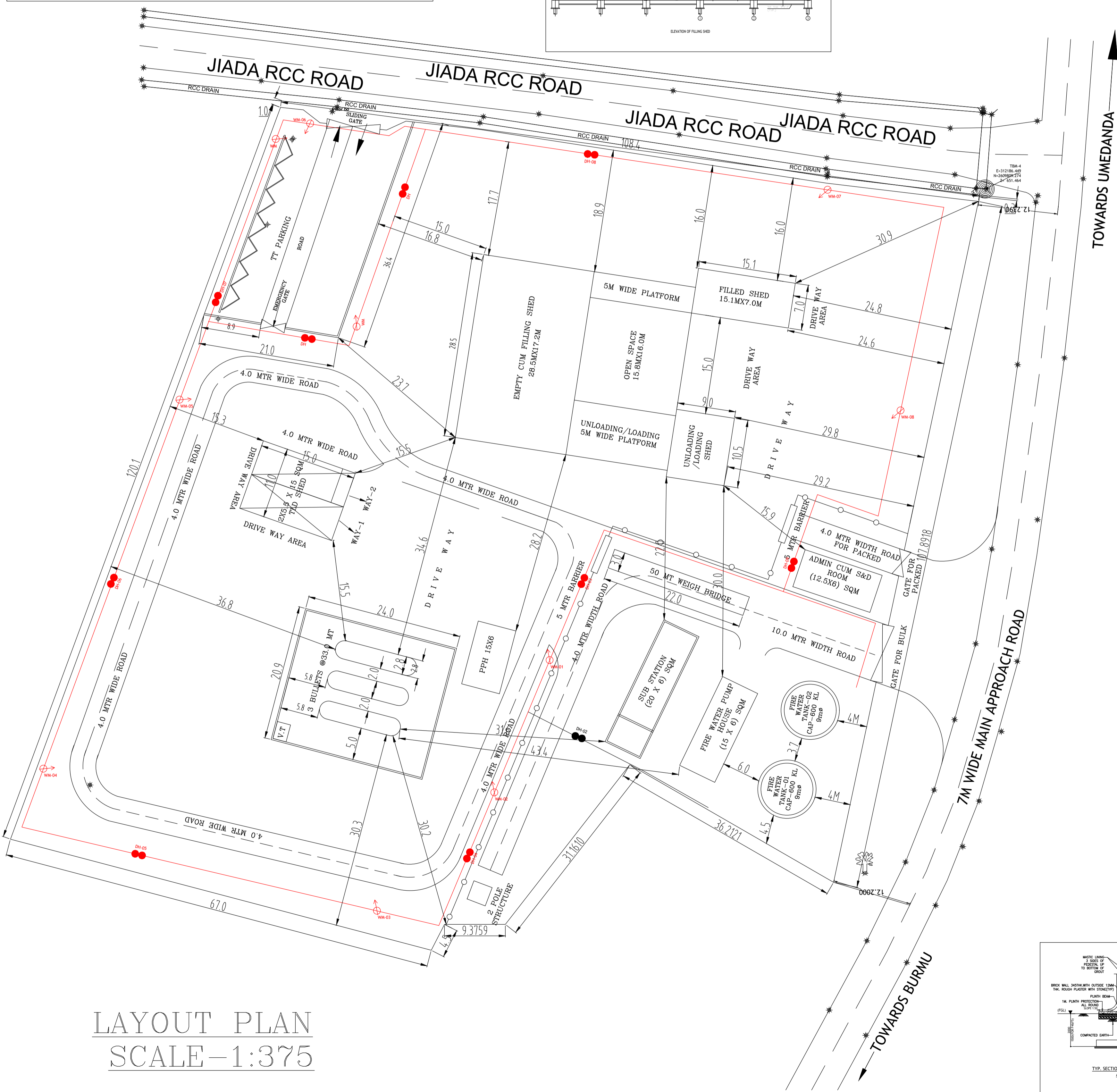
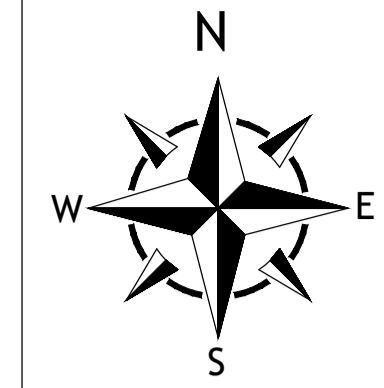
SL.NO.	DESCRIPTION	LEGEND
1.	FIRE WATER ABOVE GROUND	—
2.	FIRE WATER UNDER GROUND	—
3.	WATER MONITOR	WM-XX
4.	DOUBLE HYDRANT	DH-XX
5.	GATE VALVE	GV
6.	REDUCER / EXPANDER	RE



ELEVATION OF FILLING SHED



SITE PLAN



LAYOUT PLAN
SCALE-1:375

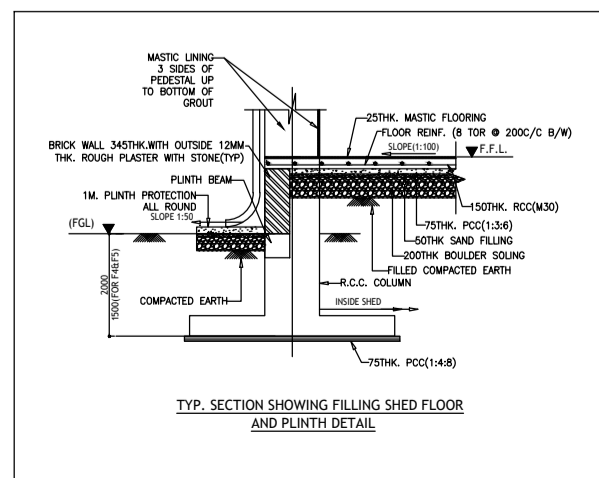
TOWARDS UMEDANDA

TOWARDS BURMU

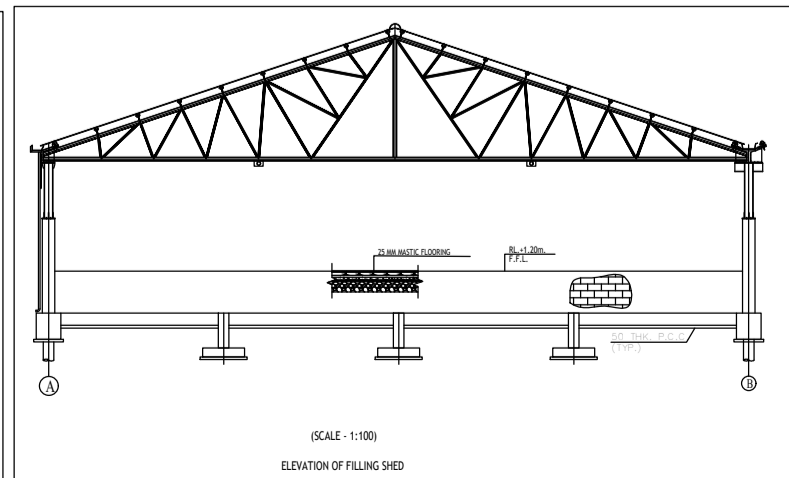
INTER DISTANCE FOR LPG FACILITIES (PROPOSED)
AT RANCHI LPG BOTTLING PLANT, IPPL

SL.	FACILITIES	(1)	(2)	(3)	(4)	(5)	
1	ABOVE GROUND BULLET	--	30.0	40.3	16.3	50.3	ACTUAL
		--	30	30	15	30	OISD-169
2	BOUNDARY PROPERTY LINE	30.0	--	16.0	16.8	4.0	ACTUAL
		30	--	15	15	--	OISD-169
3	LPG SHED	40.3	16.0	--	16.1	30.0	ACTUAL
		30	15	--	15	30	OISD-169
4	TLD SHED	15.0	16.8	16.1	--	62.1	ACTUAL
		15	15	15	--	30	OISD-169
5	FIRE PUMP HOUSE	50.3	4.0	30.0	62.1	--	ACTUAL
		30	--	30	30	--	OISD-169

REV.NO.	DESCRIPTION	DATE	REV.BY	APP.BY
 Indian Oil Petronas Private Limited <small>ACROPOLIS, 12th Floor, Unit 1 & 2 Premises No-1858/1, Rajdanga Main Road, Kolkata - 700107</small> INDIAN OIL PETRONAS PRIVATE LIMITED <small>KOLKATA -</small>				
PROJECT SETTING UP A LPG BOTTLING PLANT UNDER OISD 169A AT RANCHI SITE INDIAN OIL PETRONAS PRIVATE LIMITED				
TITLE PLANT LAYOUT OF PROPOSED LPG BOTTLING PLANT AT RANCHI				
DRAWN	JAY	DRG. NO.ST-IPPL-RANCHI-3231-100/1(R2)		
CHACKED		DATE 27.12.2023		
APPRD		SCALE 1:375		
PREPARED BY:		TECHNO CAD COMPUTERS NEW DELHI 9818349915		



TYP SECTION SHOWING FILLING SHED FLOOR AND PLINTH DETAILS



ELEVATION OF FILLING SHED