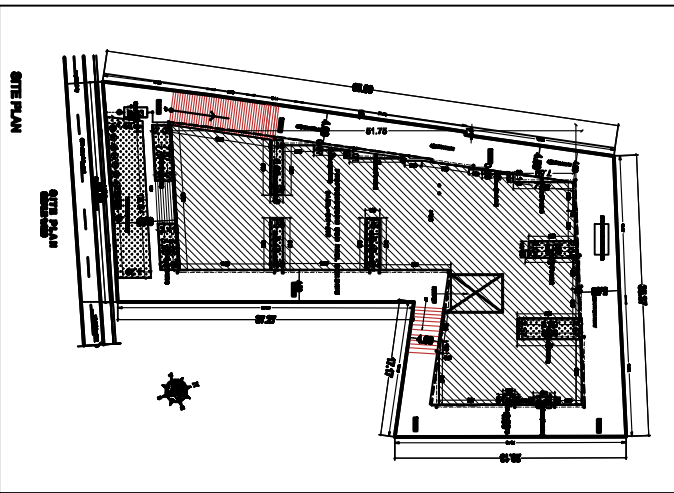
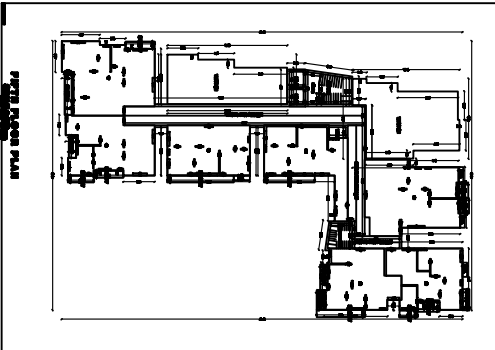
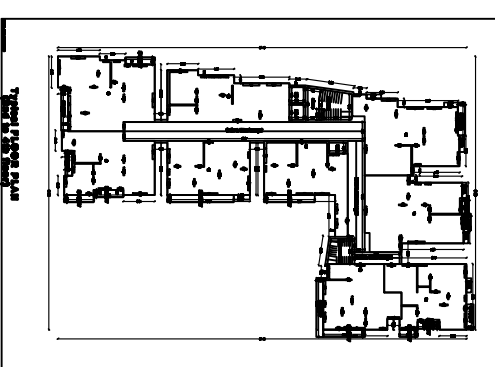
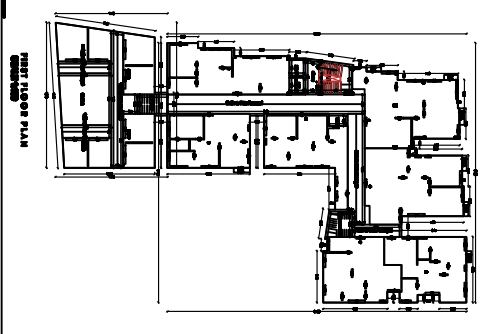
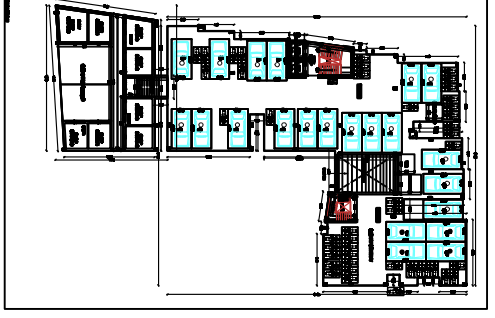
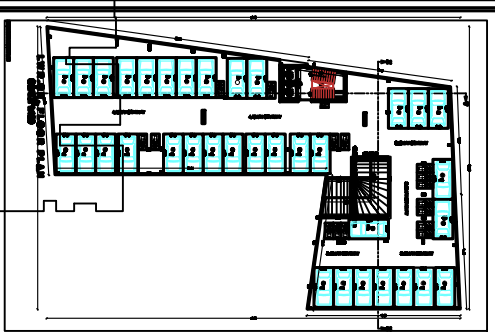


INDEX	
1	1st Floor Plan
2	2nd Floor Plan
3	3rd Floor Plan
4	Structural Grid Plan
5	Site Plan
6	Section AA
7	Section CC
8	Slope of 1:100
9	Column and Beam Details



NOTES

1. D.C. 1204-42 / D.C.C.
2. COLUMN BEARING R/C C/TANK
3. BEAMS S4/S & LINES ACCORDING
4. WALLS - 5" BRICKWORK IN CM 1:3
5. WINDOWS - FULLY GLAZED/RES. CURTAINMENT
6. DOORS - 5" S.S.W/1/4" RUBBER DOOR
7. FLOORING - 1/2" T.N. RUBBER ON WALL 1:3
8. WALL FINISH - 1/2" T.N. RUBBER ON WALL 1:3
9. ROOFING - 7" INSULATED CONCRETE
10. FINISHES - REFER ARCHITECTURAL
11. WINDOWS - 5" CONCRETE CURTAIN WALLING

(7) Schedule of Doors & Windows

Sl. No.	Type	Height	Width	Area	Perimeter
1	W	2.100	1.200	2.520	6.600
2	D	2.100	0.900	1.890	6.000
3	W	2.100	1.500	3.150	7.200
4	D	2.100	1.200	2.520	6.600
5	W	2.100	1.800	3.780	8.100
6	D	2.100	1.500	2.520	6.600
7	W	2.100	2.100	4.410	8.400
8	D	2.100	1.800	3.780	7.800
9	W	2.100	1.500	3.150	7.200
10	D	2.100	1.200	2.520	6.600
11	W	2.100	1.800	3.780	8.100
12	D	2.100	1.500	3.150	7.200

