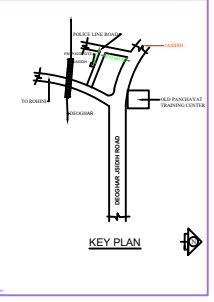
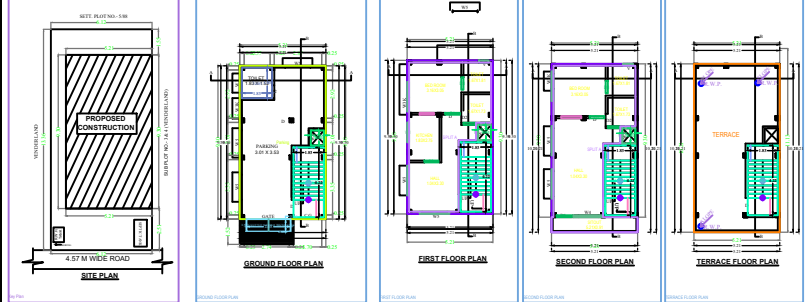
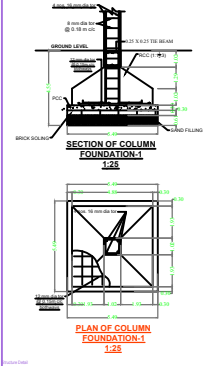
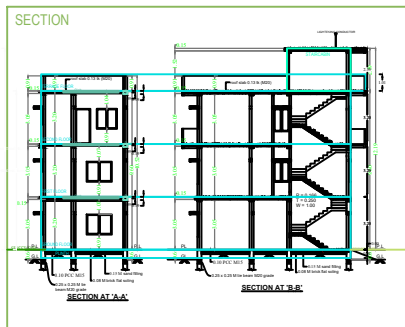
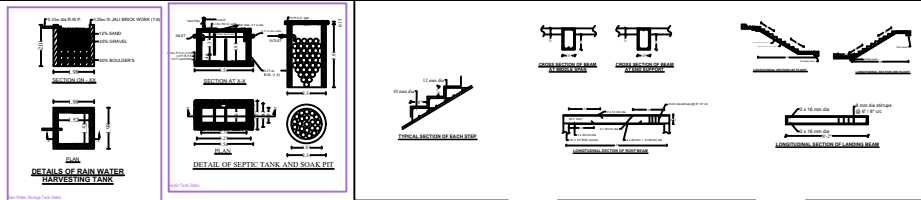


Project Title :SMT SALINI BARNWAL AND SRI RADHEY SHYAM BARNWAL



SET BACK STATEMENT

	REQUIRED	ACTUAL PROVIDED
FRONT	2.50 M	2.51 M
REAR	1.50 M	1.53 M
SIDE LEFT	0.90 M	0.91 M
RIGHT SIDE	XXX	XXX

AREA STATEMENT

PLOT AREA = 81.88 sqm.
 GROUND FLOOR = 48.54 sqm.
 FIRST FLOOR = 48.54 sqm.
 SECOND FLOOR = 56.42 sqm.
 TOTAL = 153.50 sqm.
 F.A.R. = 1.88 < 2.5
 COVERAGE = 59.51 % < 70%

DOOR-WINDOW SCHEDULE

Sl. no.	Particulars	Symbol	Size
1.	Doors	D	1.04 X 2.13
		D1	0.91 X 2.13
		D2	0.76 X 2.13
2.	Windows	WS	1.52 X 1.37
		W4	1.22 X 1.37
		W3K	0.91 X 1.14
		V	0.61 X 0.46

PLAN, ELEVATION & DETAIL DRAWINGS OF PROPOSED TRIPLE STORED RESIDENTIAL BUILDING OF SMT. SALINI BARNWAL W/O SRI VIKASH BARNWAL S/O SRI RADHEY SHYAM BARNWAL IN MOUZA-DHOUNI, NO.-201, PART OF SETT. PLOT NO.- 588, PART OF T.P. PLOT NO. 411 & 413, SETT. J.B. NO. 4, PRESENT J.B. NO.- 3532(Cha), 3532 (Chha), 3532(Cha) & 3532(Cha), Part of SETTLEMENT PLOT NO. 4 OF TOWN PLOT NO. 411 & 413, SUB PLOT NO. 3 & 4 PART, WARD NO.- 02 UNDER DEOGHAR MUNICIPAL CORPORATION.

Scale 1:100

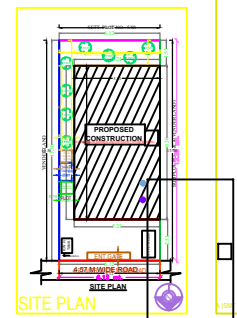
DRAWN BY:- KUNDAN

CERTIFIED THAT TOTAL HEIGHT OF THE BUILDING IS 9.78 METERS < 10 METERS

Sig. Of Owner

Sig. Of Engineer

LACHHIRAMKA & ASSOCIATES
 ARCHITECTS & DESIGNERS
 HOTEL, MAHARAJA COMPLEX,S.S.M
 JALAN ROAD,B DEOGHAR-741112,
 MOB:-09431133545
 e-mail :- ypb@lachhiramka@yahoo.com



SET BACK STATEMENT

	REQUIRED	ACTUAL PROVIDED
FRONT	2.50 M	2.51 M
REAR	1.50 M	1.53 M
SIDE LEFT	0.90 M	0.91 M
RIGHT SIDE	XXX	XXX

AREA STATEMENT

PLOT AREA = 81.88 sqm.
 GROUND FLOOR = 48.54 sqm.
 FIRST FLOOR = 48.54 sqm.
 SECOND FLOOR = 56.42 sqm.
 TOTAL = 153.50 sqm.
 F.A.R. = 1.88 < 2.5
 COVERAGE = 59.51 % < 70%

DOOR-WINDOW SCHEDULE

Sl. no.	Particulars	Symbol	Size
1.	Doors	D	1.04 X 2.13
		D1	0.91 X 2.13
		D2	0.76 X 2.13
2.	Windows	WS	1.52 X 1.37
		W4	1.22 X 1.37
		W3K	0.91 X 1.14
		V	0.61 X 0.46

PLAN, ELEVATION & DETAIL DRAWINGS OF PROPOSED TRIPLE STORED RESIDENTIAL BUILDING OF SMT. SALINI BARNWAL W/O SRI VIKASH BARNWAL S/O SRI RADHEY SHYAM BARNWAL IN MOUZA-DHOUNI, NO.-201, PART OF SETT. PLOT NO.- 588, PART OF T.P. PLOT NO. 411 & 413, SETT. J.B. NO. 4, PRESENT J.B. NO.- 3532(Cha), 3532 (Chha), 3532(Cha) & 3532(Cha), Part of SETTLEMENT PLOT NO. 4 OF TOWN PLOT NO. 411 & 413, SUB PLOT NO. 3 & 4 PART, WARD NO.- 02 UNDER DEOGHAR MUNICIPAL CORPORATION.

Scale 1:100

DRAWN BY:- KUNDAN

CERTIFIED THAT TOTAL HEIGHT OF THE BUILDING IS 9.78 METERS < 10 METERS

Sig. Of Owner

Sig. Of Engineer

LACHHIRAMKA & ASSOCIATES
 ARCHITECTS & DESIGNERS
 HOTEL, MAHARAJA COMPLEX,S.S.M
 JALAN ROAD,B DEOGHAR-741112,
 MOB:-09431133545
 e-mail :- ypb@lachhiramka@yahoo.com

Building 'A' (SMT SALINI BARNWAL AND SRI RADHEY SHYAM BARNWAL)

Floor No.	Particulars	Area (Sq. M)	Volume (Cu. M)	Height (M)	Area (Sq. M)	Volume (Cu. M)	Height (M)	Total (No.)
1st Floor	Living Room	15.00	15.00	3.00	15.00	15.00	3.00	15
1st Floor	Kitchen	10.00	10.00	3.00	10.00	10.00	3.00	10
1st Floor	Bed Room	12.00	12.00	3.00	12.00	12.00	3.00	12
1st Floor	Bath Room	5.00	5.00	3.00	5.00	5.00	3.00	5
1st Floor	Veranda	8.00	8.00	3.00	8.00	8.00	3.00	8
1st Floor	Terrace	10.00	10.00	3.00	10.00	10.00	3.00	10
1st Floor	Staircase	2.00	2.00	3.00	2.00	2.00	3.00	2
1st Floor	W.C.	1.00	1.00	3.00	1.00	1.00	3.00	1
1st Floor	Other	1.00	1.00	3.00	1.00	1.00	3.00	1
1st Floor	Total	64.00	64.00	3.00	64.00	64.00	3.00	64
2nd Floor	Living Room	15.00	15.00	3.00	15.00	15.00	3.00	15
2nd Floor	Kitchen	10.00	10.00	3.00	10.00	10.00	3.00	10
2nd Floor	Bed Room	12.00	12.00	3.00	12.00	12.00	3.00	12
2nd Floor	Bath Room	5.00	5.00	3.00	5.00	5.00	3.00	5
2nd Floor	Veranda	8.00	8.00	3.00	8.00	8.00	3.00	8
2nd Floor	Terrace	10.00	10.00	3.00	10.00	10.00	3.00	10
2nd Floor	Staircase	2.00	2.00	3.00	2.00	2.00	3.00	2
2nd Floor	W.C.	1.00	1.00	3.00	1.00	1.00	3.00	1
2nd Floor	Other	1.00	1.00	3.00	1.00	1.00	3.00	1
2nd Floor	Total	64.00	64.00	3.00	64.00	64.00	3.00	64
Total	Total	128.00	128.00	3.00	128.00	128.00	3.00	128

SCHEDULE OF JOINTS

JOINT NO.	TYPE	LENGTH	DEPTH	DATE
1	Vertical	2.13	0.25	04
2	Horizontal	2.13	0.25	01
3	Vertical	2.13	0.25	02
4	Horizontal	2.13	0.25	03
5	Vertical	2.13	0.25	04
6	Horizontal	2.13	0.25	05
7	Vertical	2.13	0.25	06
8	Horizontal	2.13	0.25	07
9	Vertical	2.13	0.25	08
10	Horizontal	2.13	0.25	09
11	Vertical	2.13	0.25	10
12	Horizontal	2.13	0.25	11
13	Vertical	2.13	0.25	12
14	Horizontal	2.13	0.25	13
15	Vertical	2.13	0.25	14
16	Horizontal	2.13	0.25	15
17	Vertical	2.13	0.25	16
18	Horizontal	2.13	0.25	17
19	Vertical	2.13	0.25	18
20	Horizontal	2.13	0.25	19
21	Vertical	2.13	0.25	20
22	Horizontal	2.13	0.25	21
23	Vertical	2.13	0.25	22
24	Horizontal	2.13	0.25	23
25	Vertical	2.13	0.25	24
26	Horizontal	2.13	0.25	25
27	Vertical	2.13	0.25	26
28	Horizontal	2.13	0.25	27
29	Vertical	2.13	0.25	28
30	Horizontal	2.13	0.25	29
31	Vertical	2.13	0.25	30
32	Horizontal	2.13	0.25	31
33	Vertical	2.13	0.25	32
34	Horizontal	2.13	0.25	33
35	Vertical	2.13	0.25	34
36	Horizontal	2.13	0.25	35
37	Vertical	2.13	0.25	36
38	Horizontal	2.13	0.25	37
39	Vertical	2.13	0.25	38
40	Horizontal	2.13	0.25	39
41	Vertical	2.13	0.25	40
42	Horizontal	2.13	0.25	41
43	Vertical	2.13	0.25	42
44	Horizontal	2.13	0.25	43
45	Vertical	2.13	0.25	44
46	Horizontal	2.13	0.25	45
47	Vertical	2.13	0.25	46
48	Horizontal	2.13	0.25	47
49	Vertical	2.13	0.25	48
50	Horizontal	2.13	0.25	49
51	Vertical	2.13	0.25	50
52	Horizontal	2.13	0.25	51
53	Vertical	2.13	0.25	52
54	Horizontal	2.13	0.25	53
55	Vertical	2.13	0.25	54
56	Horizontal	2.13	0.25	55
57	Vertical	2.13	0.25	56
58	Horizontal	2.13	0.25	57
59	Vertical	2.13	0.25	58
60	Horizontal	2.13	0.25	59
61	Vertical	2.13	0.25	60
62	Horizontal	2.13	0.25	61
63	Vertical	2.13	0.25	62
64	Horizontal	2.13	0.25	63
65	Vertical	2.13	0.25	64
66	Horizontal	2.13	0.25	65
67	Vertical	2.13	0.25	66
68	Horizontal	2.13	0.25	67
69	Vertical	2.13	0.25	68
70	Horizontal	2.13	0.25	69
71	Vertical	2.13	0.25	70
72	Horizontal	2.13	0.25	71
73	Vertical	2.13	0.25	72
74	Horizontal	2.13	0.25	73
75	Vertical	2.13	0.25	74
76	Horizontal	2.13	0.25	75
77	Vertical	2.13	0.25	76
78	Horizontal	2.13	0.25	77
79	Vertical	2.13	0.25	78
80	Horizontal	2.13	0.25	79
81	Vertical	2.13	0.25	80
82	Horizontal	2.13	0.25	81
83	Vertical	2.13	0.25	82
84	Horizontal	2.13	0.25	83
85	Vertical	2.13	0.25	84
86	Horizontal	2.13	0.25	85
87	Vertical	2.13	0.25	86
88	Horizontal	2.13	0.25	87
89	Vertical	2.13	0.25	88
90	Horizontal	2.13	0.25	89
91	Vertical	2.13	0.25	90
92	Horizontal	2.13	0.25	91
93	Vertical	2.13	0.25	92
94	Horizontal	2.13	0.25	93
95	Vertical	2.13	0.25	94
96	Horizontal	2.13	0.25	95
97	Vertical	2.13	0.25	96
98	Horizontal	2.13	0.25	97
99	Vertical	2.13	0.25	98
100	Horizontal	2.13	0.25	99
101	Vertical	2.13	0.25	100
102	Horizontal	2.13	0.25	101
103	Vertical	2.13	0.25	102
104	Horizontal	2.13	0.25	103
105	Vertical	2.13	0.25	104
106	Horizontal	2.13	0.25	105
107	Vertical	2.13	0.25	106
108	Horizontal	2.13	0.25	107
109	Vertical	2.13	0.25	108
110	Horizontal	2.13	0.25	109
111	Vertical	2.13	0.25	110
112	Horizontal	2.13	0.25	111
113	Vertical	2.13	0.25	112
114	Horizontal	2.13	0.25	113
115	Vertical	2.13	0.25	114
116	Horizontal	2.13	0.25	115
117	Vertical	2.13	0.25	116
118	Horizontal	2.13	0.25	117
119	Vertical	2.13	0.25	118
120	Horizontal	2.13	0.25	119
121	Vertical	2.13	0.25	120
122	Horizontal	2.13	0.25	121
123	Vertical	2.13	0.25	122
124	Horizontal	2.13	0.25	123
125	Vertical	2.13	0.25	124
126	Horizontal	2.13	0.25	125
127	Vertical	2.13	0.25	126
128	Horizontal	2.13	0.25	127
129	Vertical	2.13	0.25	128
130	Horizontal	2.13	0.25	129
131	Vertical	2.13	0.25	130
132	Horizontal	2.13	0.25	131
133	Vertical	2.13	0.25	132
134	Horizontal	2.13	0.25	133
135	Vertical	2.13	0.25	134
136	Horizontal	2.13	0.25	135
137	Vertical	2.13	0.25	136
138	Horizontal	2.13	0.25	137
139	Vertical	2.13	0.25	138
140	Horizontal	2.13	0.25	139
141	Vertical	2.13	0.2	