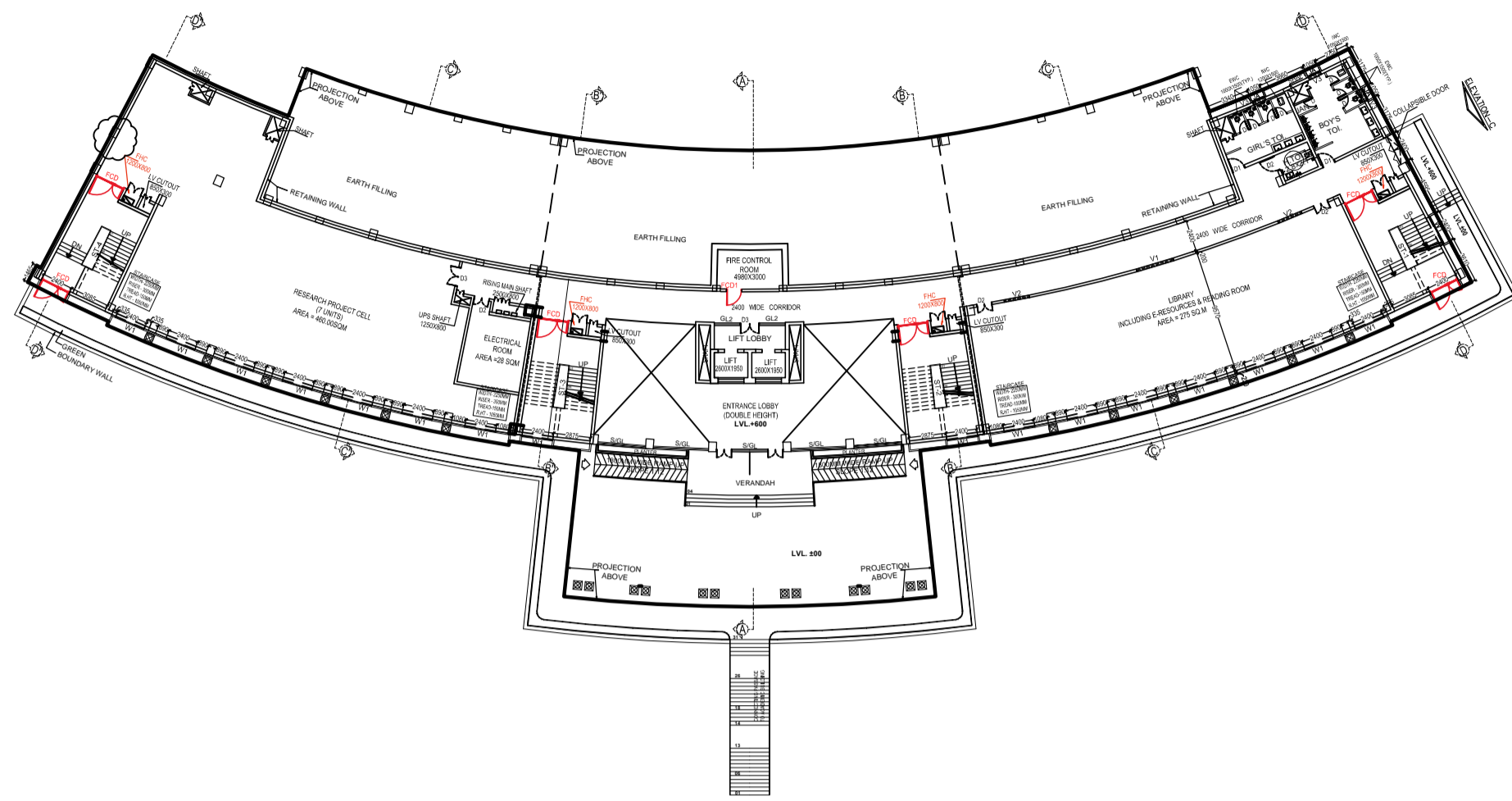


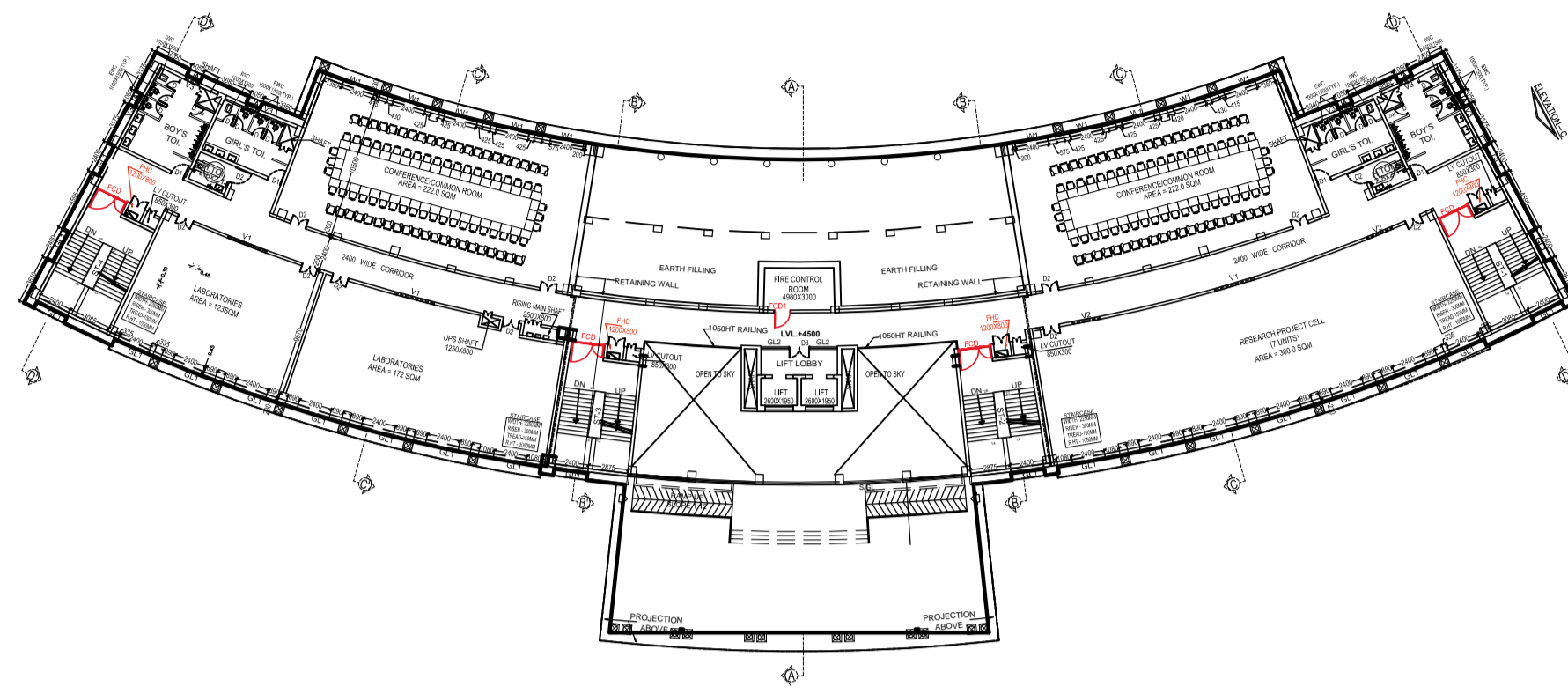
1. ± 0.0 LVL. OF APPROACH ROAD IS EQUIVALENT TO +83.20 (FOR ACADEMIC BLOCK)  
 2. +600 LVL. (F.F.L. OF BUILDING) IS EQUIVALENT TO +83.80 (FOR ACADEMIC BLOCK)

IMPORTANT NOTE:-  
 MINOR ADJUSTMENT IN LAYOUT CAN BE DONE AS/SITE CONDITIONS WITH THE PRIOR APPROVAL FROM E.I.C.

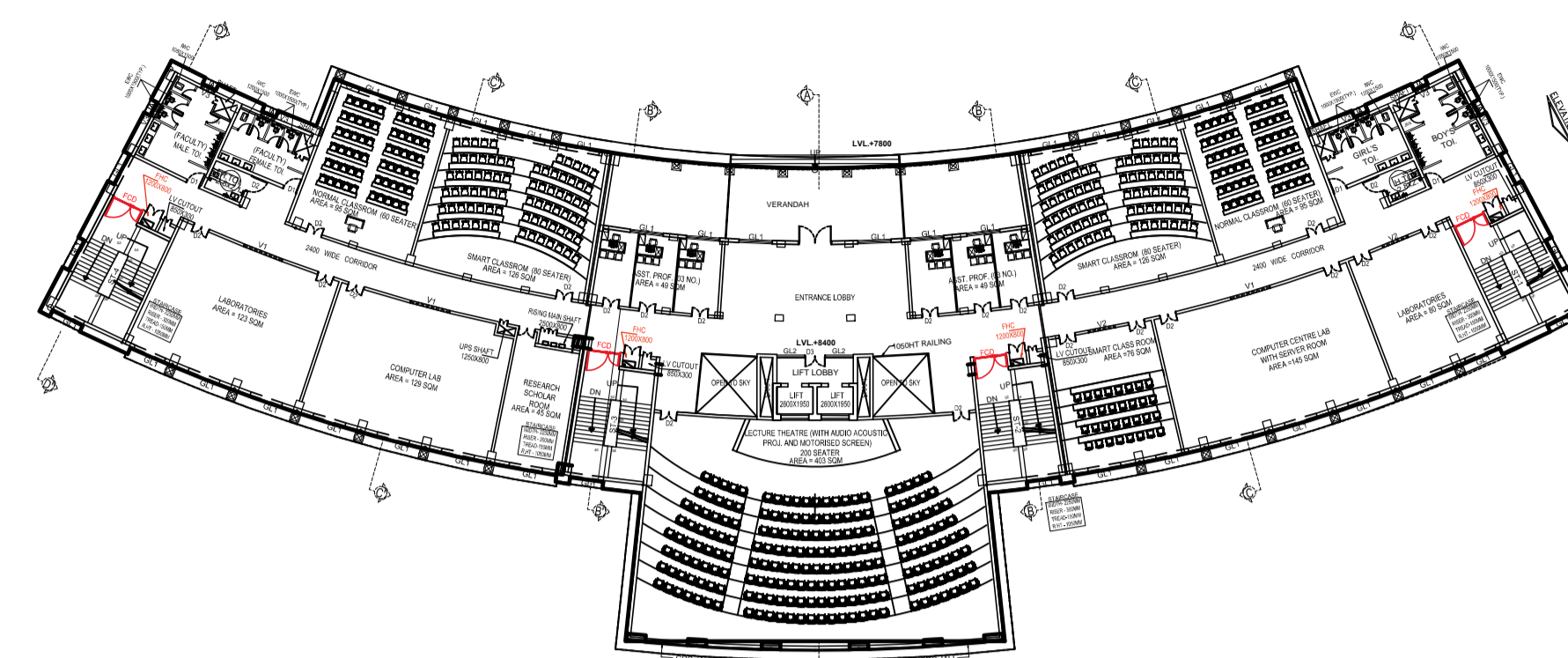
ALL LEVELS SHOWN IN PLANS ARE F.F.L. EXCEPT SHOWN OTHERWISE.



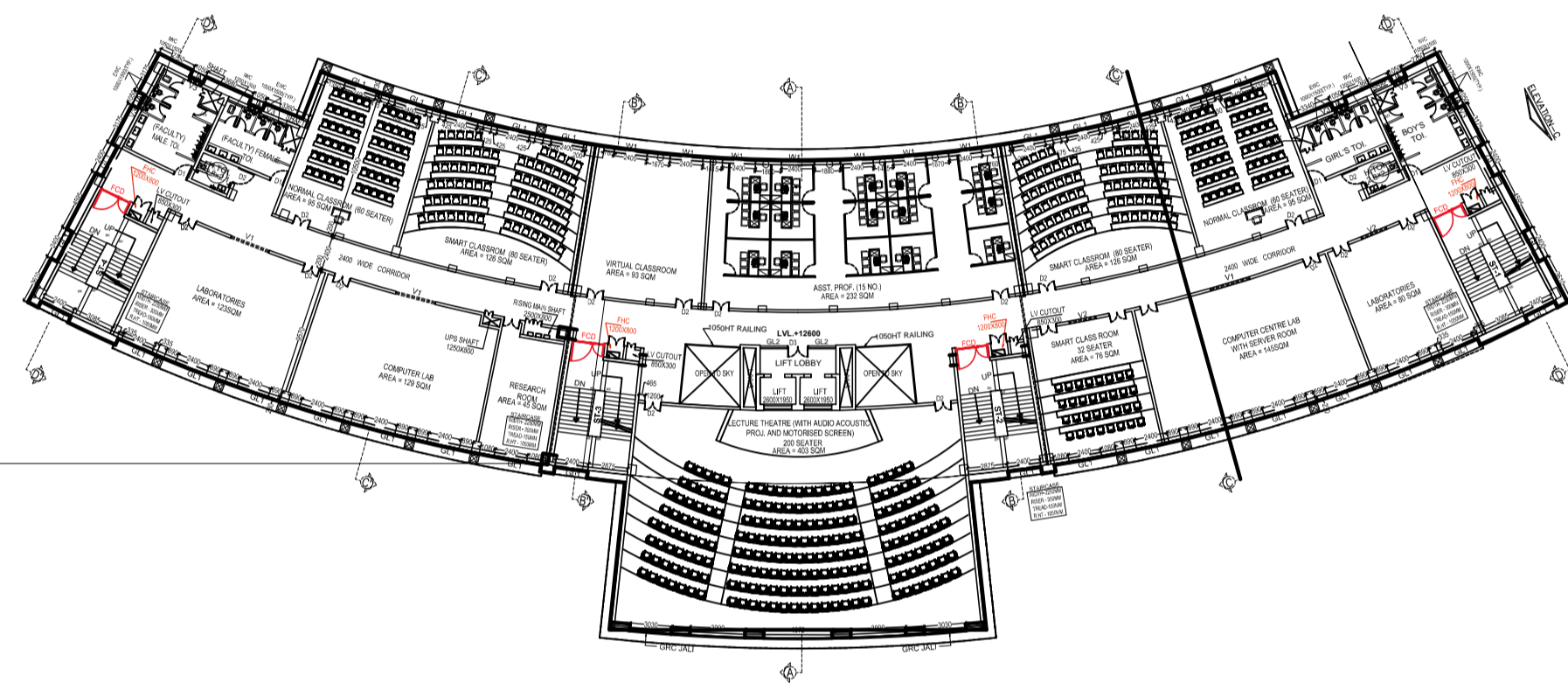
ACADEMIC GROUND FLOOR PLAN



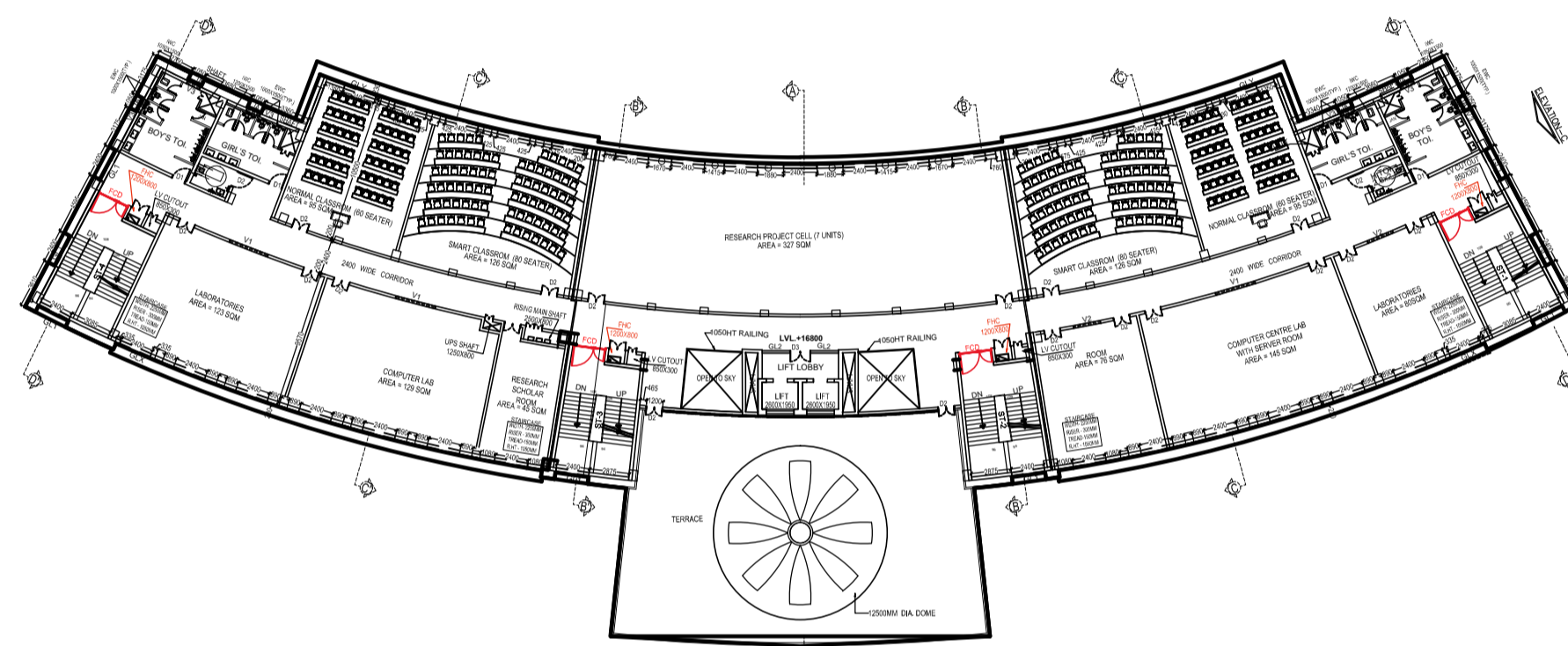
ACADEMIC FIRST FLOOR PLAN



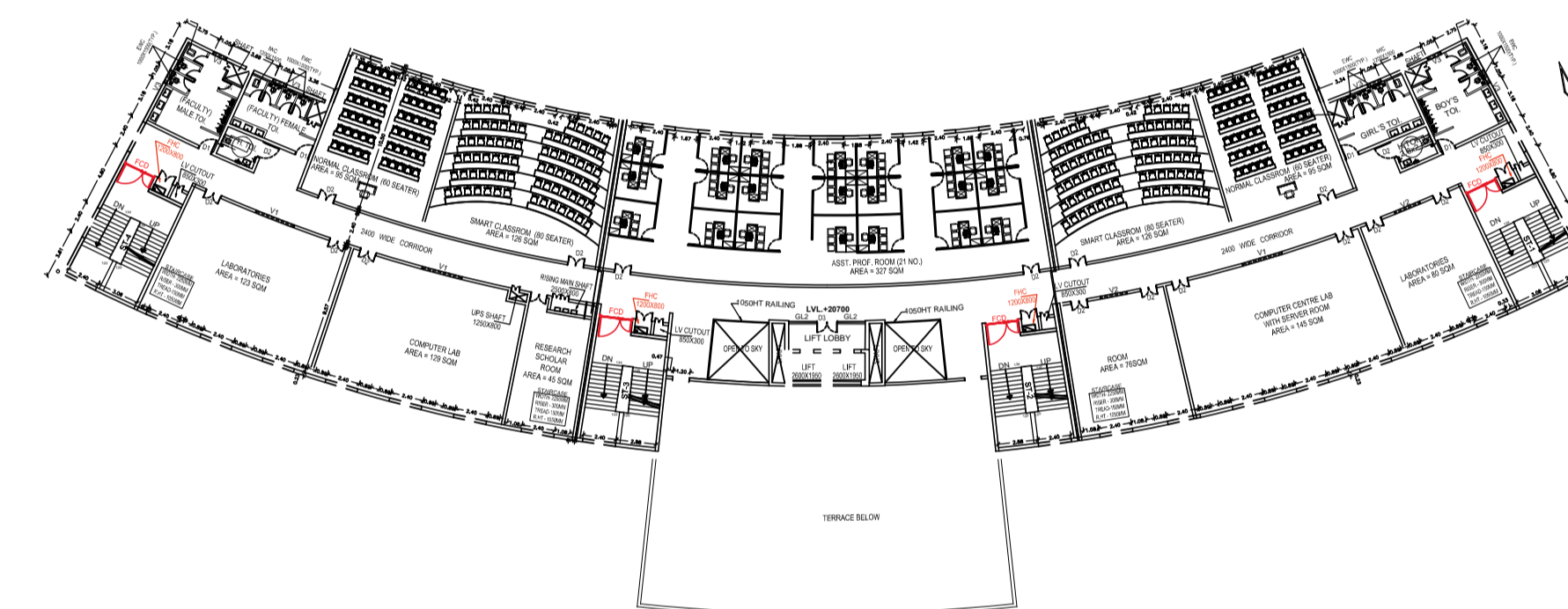
ACADEMIC SECOND FLOOR PLAN



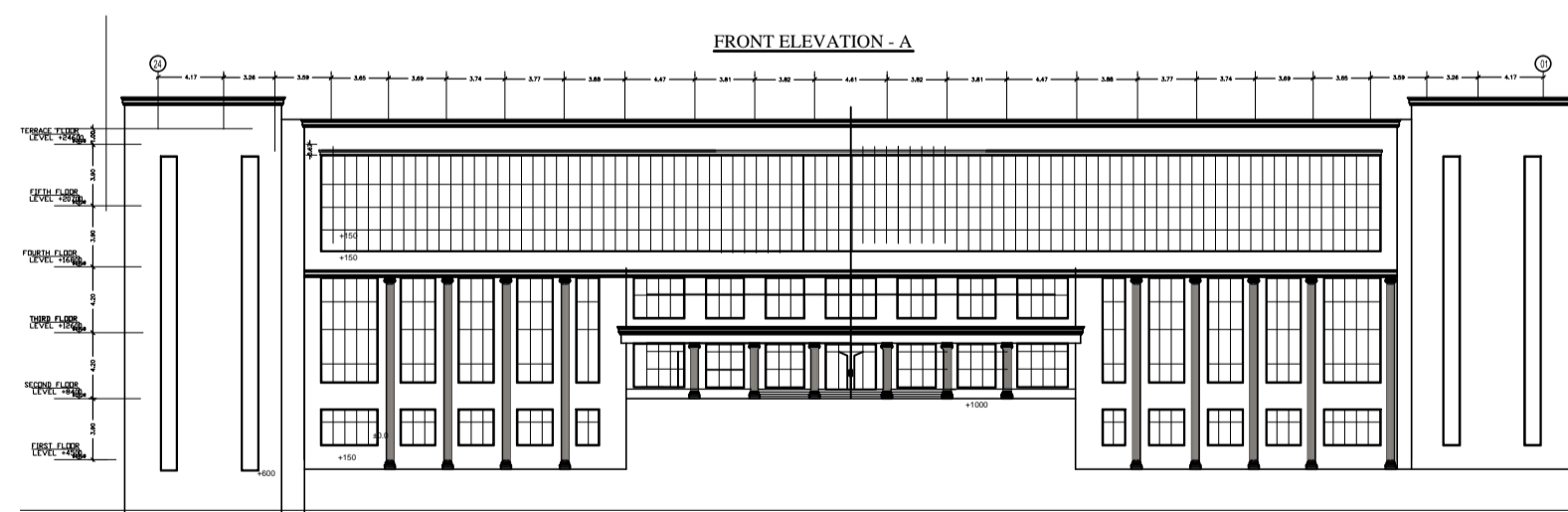
ACADEMIC THIRD FLOOR PLAN



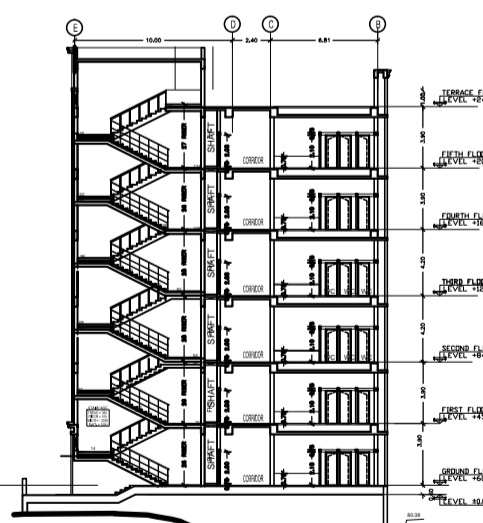
ACADEMIC FOURTH FLOOR PLAN



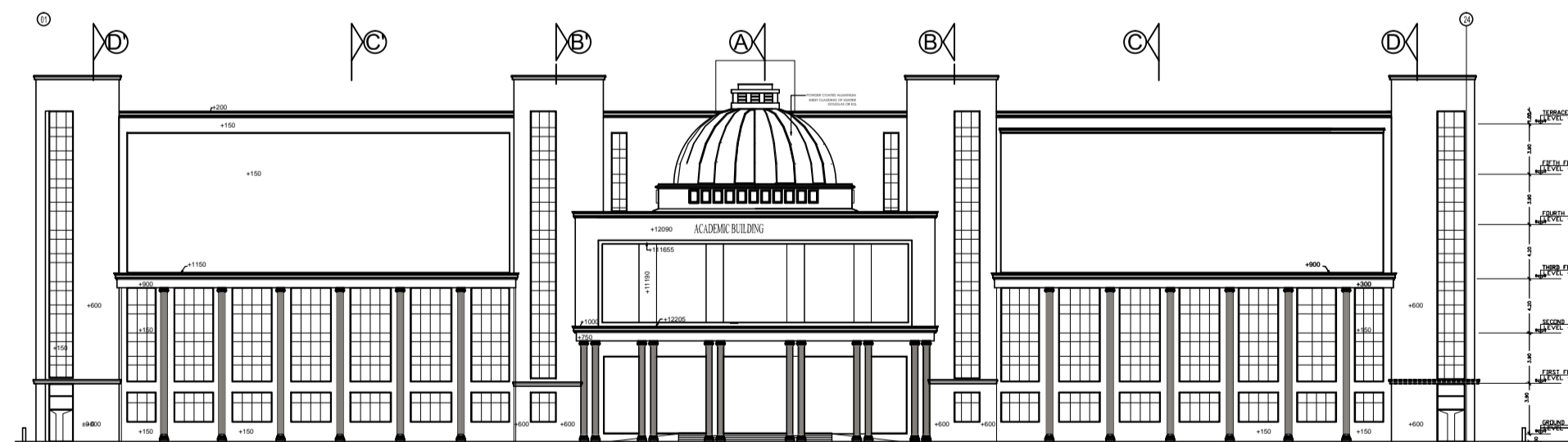
ACADEMIC FIFTH FLOOR PLAN



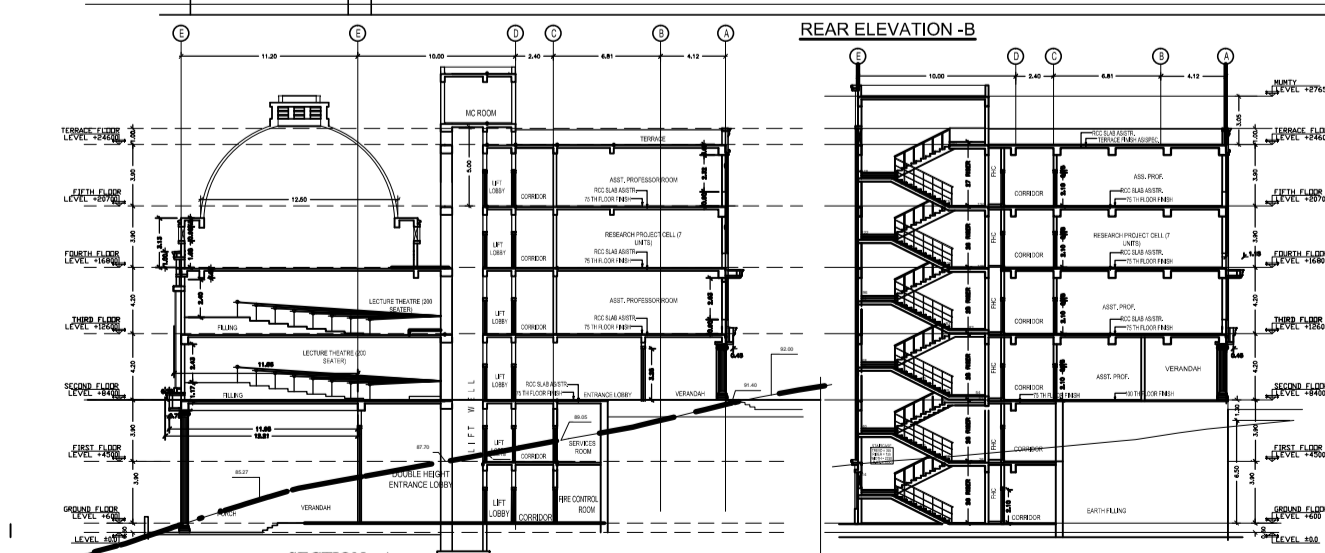
FRONT ELEVATION - A



SECTION - D

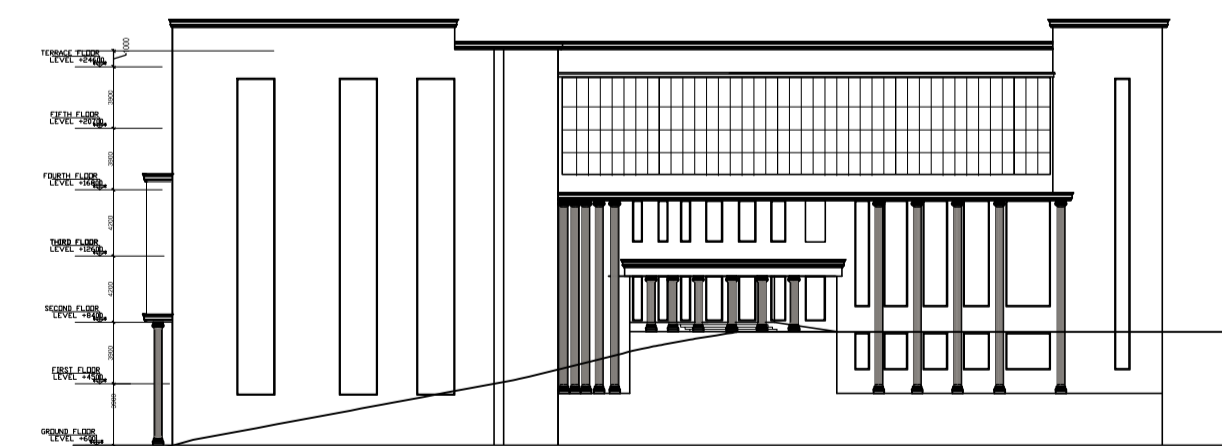


REAR ELEVATION - B



SECTION - A (PART SECTION OF ACADEMIC BLOCK)

SECTION - B



SIDE ELEVATION - C